

INSTRUCTIONS FOR USE SULIQUA 100/50 SOLUTION FOR INJECTION WITH AN INJECTION PEN (10-40 DOSE STEPS)

Read the patient leaflet and these instructions for use before first use of Suliqua

The Suliqua 100/50 SoloStar pen contains insulin glargine and lixisenatide. The combination of these two medical preparations in this pen is intended for daily injection of 10 to 40 'dose steps' of Suliqua.

- Never re-use the same needles. If you do, you may not receive your full dose (rather, too small a dose) or you will receive too large a dose, since the needle may be blocked.
- Never use a syringe to remove medicine from your pen. If you do, you may not get the correct amount of the medicine. Keep these instructions for future use.

Important information

- Never share the pen – it is intended for you only.
- Never use the pen if it is damaged or if you are not sure that it is working properly.
- Always perform a safety test. See **step 3**.
- Always carry a spare pen and extra needles in case they get lost or stop working.
- Always check the label of the pen before use to make sure that you have the right pen.

Learn to inject

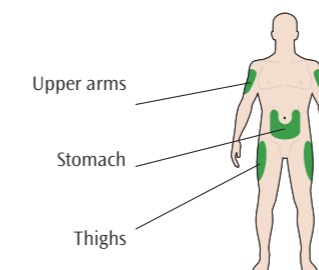
- Before using the pen, consult a doctor, pharmacist or nurse about how to inject properly.
- If you have problems handling the pen, e.g., you have problems with your eyesight, ask for help.
- Read all of the instructions before using the pen. If you do not follow all of the instructions, you may get too much or too little medicine.

Need help?
If you have any questions about Suliqua, the pen or about diabetes, ask the doctor, pharmacist or nurse.

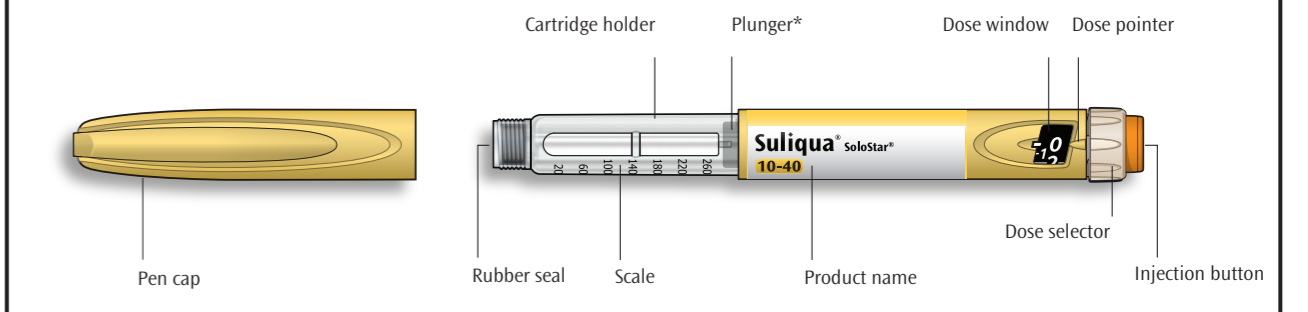
Additional items you will need

- A new sterile needle (see **step 2**).
- A sharps container for used needles (see **Throwing your pen away**).

Injection sites



Get to know your pen



* You will not see the plunger until you have injected a few doses

STEP 1 - CHECK YOUR PEN

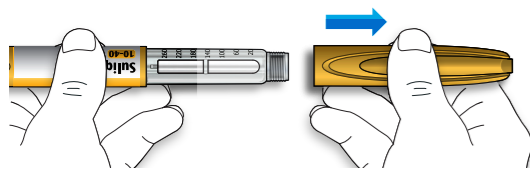
For first use of a new pen, take it out of the refrigerator at least **one** hour before the injection. Injecting cold medicine is more painful. After first use, the pen should be stored below 30°C.

A. Check the name and expiration date appearing on the label of the pen.

- Make sure you have the correct medicine. This pen is peach-colored, with an orange injection button.
- Do not use this pen if you need a daily dose less than 10 dose steps or if you need more than 40 dose steps. Consult your doctor about which pen is suitable for your needs.
- Never use the pen after its expiration date.

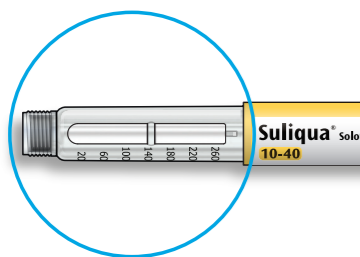


B. Remove the pen cap.



C. Check that the medicine is clear.

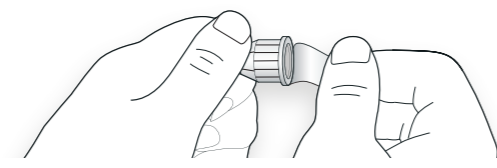
- Look at the transparent cartridge holder. Do not use the pen if the medicine looks cloudy, colored or contains particles.



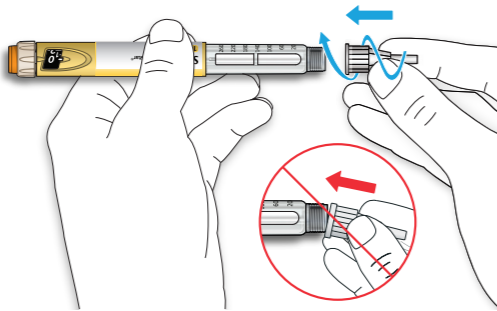
STEP 2 - ATTACH A NEW NEEDLE

- Do not re-use needles. Always use a new sterile needle for each injection. This helps prevent blockage of needles, contamination of the preparation or infection in the patient.
- Only use needles compatible with the Suliqua pen.

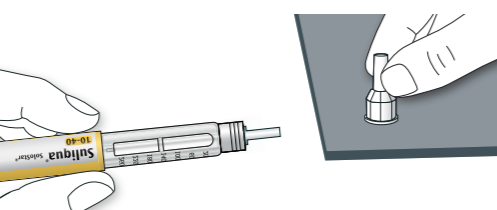
A. Take a new needle and peel off its protective seal.



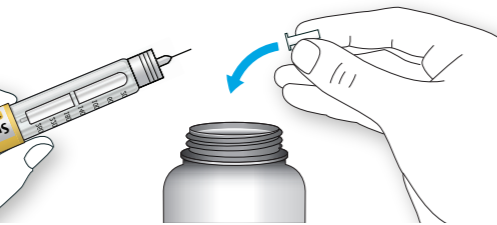
B. Keep the needle straight opposite the pen and screw it onto the pen until fixed in place. Do not overtighten.



C. Pull off the outer needle cap. Keep it for later.



D. Pull off the inner needle cap and throw it away. If you try to put it back on, you may accidentally stick yourself with the needle.



Handling needles

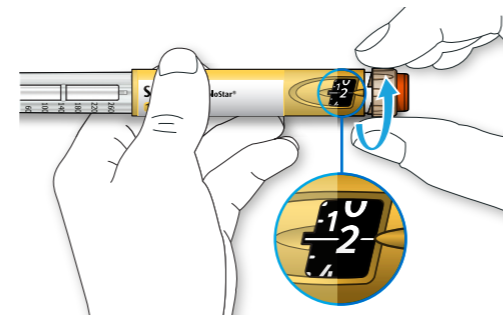
- Take care when handling needles – this is to prevent needle injury and cross-infection.

STEP 3 - DO A SAFETY TEST

Always do a safety test before each injection. This is to:

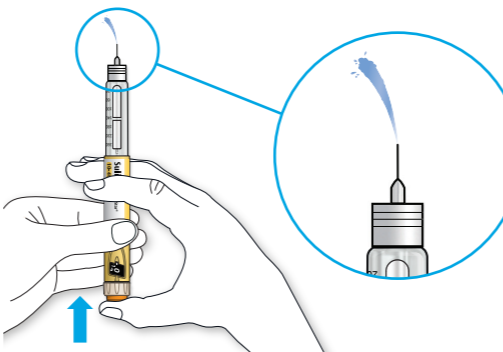
- Check that your pen and the needle are working properly.
- Make sure that you get the correct dose.

A. Select 2 dose steps by turning the dose selector until the dose pointer indicates the number 2.



B. Press the injection button all the way in.

- When the medicine comes out of the needle tip, your pen is working correctly; the dose pointer will go back to "0".



If no liquid appears

- You may need to repeat this step up to 3 times before seeing medicine.
- If no medicine comes out after the third time, the needle may be blocked. If this happens:
 - change the needle (see **step 6** and **step 2**).
 - then repeat the safety test (**step 3**).
- Do not use the pen if there is still no medicine coming out of the needle tip. Use a new pen.
- Do not use a syringe to remove medicine from your pen.

If you see air bubbles

- You may see air bubbles in the medicine. This is normal; they will not harm you.

STEP 4 - SELECT THE DOSE

- Only use this pen to inject single daily doses from 10 to 40 dose steps.
- Do not select a dose or press the injection button without a needle attached to the pen. This can damage the pen.

A. Make sure a needle is attached and that the dose is set to "0".

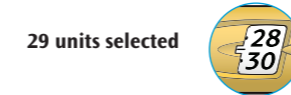


B. Turn the dose selector until the dose pointer points to your dose.

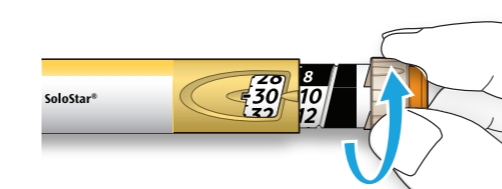
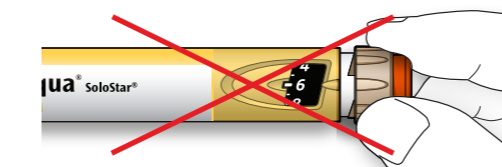
- If you turned past your dose, you can turn back again.
- If there are not enough dose steps left in your pen for your dose, the dose selector will stop at the number of dose steps left.
- If you cannot select your full prescribed dose, use a new pen or inject the remaining dose steps and use a new pen to complete your dose. Only in this case, it is okay to inject a partial dose of less than 10 dose steps. Always use another Suliqua 10-40 SoloStar pen to complete your dose and not other pen.

How to read the dose window

- Even numbers are presented in line with the dose pointer and odd numbers are presented as a line between even numbers.



- Do not use the pen if your once-daily dose is less than 10 dose steps, and then shown as white numbers on a black background.



Units of medicine in your pen

- Your pen contains 300 dose steps. You can select your dose in intervals of one dose step.
- Do not use this pen if you need a once-daily dose that is less than 10 dose steps or more than 40 dose steps. Discuss with your doctor which pen is suitable for your needs.
- Each pen contains more than one dose.

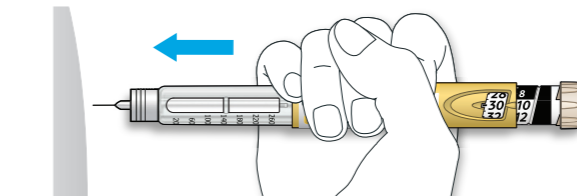
STEP 5 - INJECT YOUR DOSE

- If you find it hard to press the injection button in, do not force it, as this may break the pen.
- Change the needle (see **step 6** Remove the needle and **step 2** Attach a new needle) and then do a safety test (see **step 3**).
- If you still find it hard to press in, use a new pen.
- Do not use a syringe to remove medicine from your pen.

A. Choose an injection site as marked in the image of injection sites above.

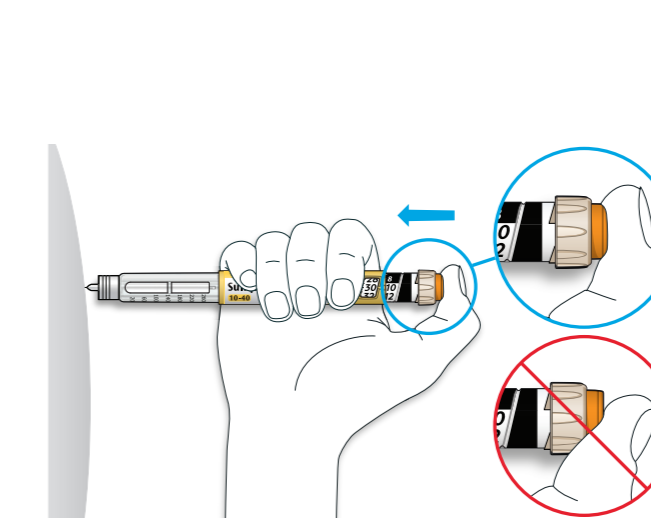
B. Push the needle into your skin as shown by your doctor, pharmacist or nurse.

- Do not touch the injection button yet.



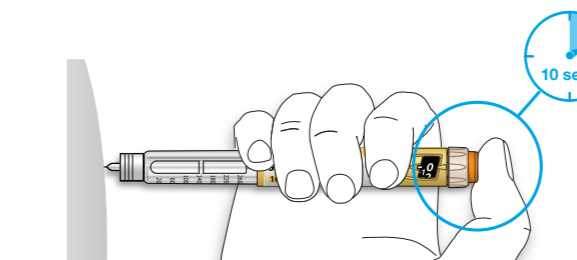
C. Place your thumb on the injection button. Then press all the way in and hold.

- Do not press at an angle – your thumb could block the dose selector from turning.



D. Keep the injection button pressed in and when you see "0" in the dose window, slowly count to 10.

- This way you will get your full dose.



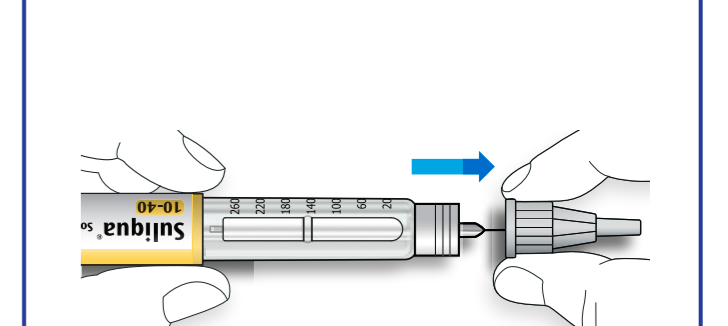
E. After holding and slowly counting to 10, release the injection button. Then remove the needle from the skin.

STEP 6 - REMOVE THE NEEDLE

- Take care when handling needles in order to prevent needle injury and cross-infection.
- Do not put the inner needle cap back on.

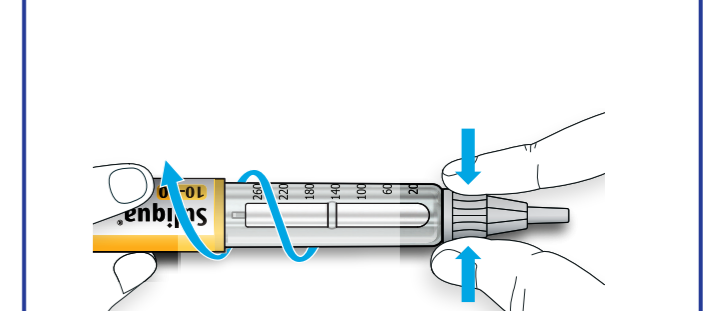
A. Grip the widest part of the outer needle cap. Keep the needle straight and guide it into the outer needle cap. Then firmly press the cap back on.

- If put on at an angle, the needle may puncture the cap.

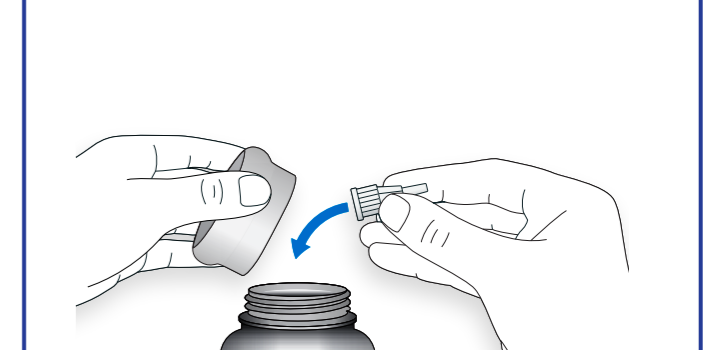


B. Grip and squeeze the widest part of the outer needle cap. Turn the pen a few times with your other hand, to remove the needle.

- If the needle doesn't come out the first time, try again.

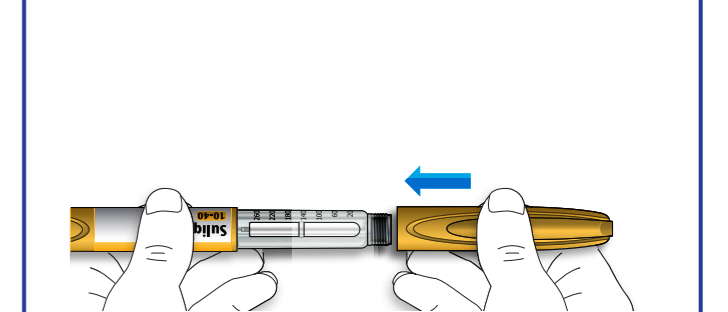


C. Throw away the used needle into a sharps container (see "Throwing your pen away", at the end of the Instructions for Use).



D. Put the pen cap back on.

- Do not put the pen back in the refrigerator.



How to store your pen

Before first use

- Store new pens (before first use) in the refrigerator, between 2°C and 8°C.
- Do not freeze.

After first use

- Store your pen at room temperature, below 25°C.
- Do not put your pen back in the refrigerator.
- Do not store your pen with the needle attached to it.
- Store your pen with the cap on it.
- Use the pen within up to 28 days of first use.

How to care for your pen

Handle your pen carefully

- If you think that your pen is damaged, do not try to fix it; use a new pen.

Protect your pen from dust and dirt

- You can clean the outside of your pen by wiping it with a damp cloth (water only). Do not soak, wash or lubricate the pen – this may damage it.

Throwing your pen away

- Remove the needle before throwing your pen away.
- Throw away a used pen in accordance with the instructions.

Technische Information / Technical information

SAP-Nr. / Plant PM code: 879612A Kontur / Outline
 Datum / Date: 07.03.2023 RP02 Druckbare Farben / printing Colours:
 Version: S1 Pantone Black C
 Abmessungen / Dimensions: 594 x 420 mm
 Seite / Page: PB/1