

Read this first

Toujeo DoubleStar contains 300 units/ml insulin glargine in a pre-filled pen (which must be discarded after use) containing 3 ml.

- **Never re-use needles.** If you do, you might get a smaller dose than required or get an overdose, as the needle may be blocked.
- **Never use a syringe to remove insulin from your pen.** If you do, you will get too much insulin. The scale on most syringes is made for non-concentrated insulin only.
- The dose selector on your Toujeo DoubleStar pen is set to **2-unit** intervals.

IMPORTANT INFORMATION

- ✗ Never share the pen – it is only for you.
- ✗ Never use the pen if it is damaged or if you are not sure that it is working properly.
- ✓ **Always perform a safety test before you use a new pen for the first time, until you see insulin coming out of the tip of the needle** (see Step 3). If you see insulin coming out of the tip of the needle, the pen is ready for use. If you do not see insulin coming out before you take your dose, you may get too small a dose or may not get insulin at all. This may cause a high blood sugar level.
- ✓ **To verify that the pen and needle are all right, always perform a safety test before each injection until you see insulin coming out of the tip of the needle** (see Step 3). If you do not perform the safety test before each injection, you may get too little insulin.
- ✓ Always carry a spare pen and spare needles in case they get lost or stop working.

Learn to inject

- Before using the pen, talk with the doctor, pharmacist or nurse about how to inject properly.
- This pen is not recommended for use by people who are blind or vision-impaired who are not assisted by a person who has been trained to use the preparation properly.
- Read all of the instructions before using the pen. If you do not follow all of these instructions, you may get too much or too little insulin.

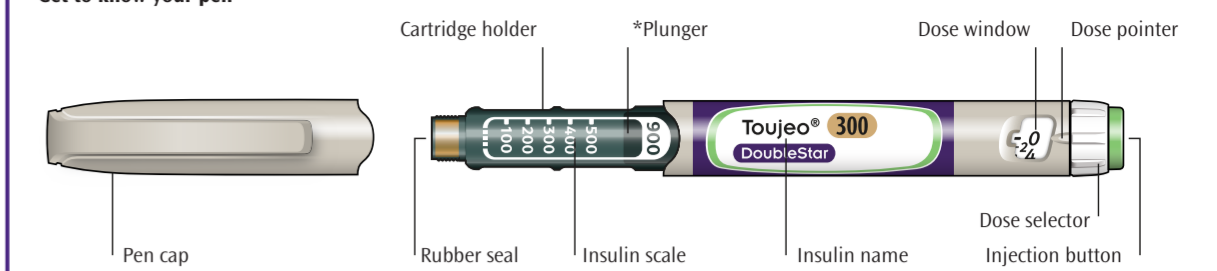
Need help?

If you have any questions about the pen or about diabetes, ask the doctor, pharmacist or nurse.

Additional items you will need

- a new sterile needle (see Step 2).
- a puncture-resistant container for used needles and pens.

Get to know your pen



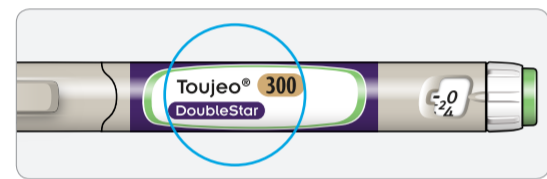
* You will not see the plunger before injecting several doses

<p>Use by</p> <ul style="list-style-type: none"> • Use your pen for up to 6 weeks after the first use. 	<p>How to store the pen</p> <p>Before first use</p> <ul style="list-style-type: none"> • Store new pens in a refrigerator, between 2°C and 8°C. • Do not freeze. <p>After first use</p> <ul style="list-style-type: none"> • Keep your pen at room temperature, below 30°C. • Never put your pen back in the refrigerator. • Never store your pen with the needle attached to it. <ul style="list-style-type: none"> • Store your pen with the cap on. • Store your pen and needles out of the reach and sight of children. 	<p>How to care for your pen</p> <p>Handle your pen with care</p> <ul style="list-style-type: none"> • Do not drop your pen or knock it against hard surfaces. • If you think that your pen has been damaged, do not try to repair it; use a new one. <p>Protect your pen from dust and dirt</p> <ul style="list-style-type: none"> • You can clean the outside of your pen by wiping it with a damp cloth. Do not soak, wash or lubricate your pen – this may damage it. 	<p>Throwing your pen away</p> <ul style="list-style-type: none"> • Remove the needle before throwing the pen away. • Throw away your used pen as you have been instructed by the pharmacist.
--	--	--	---

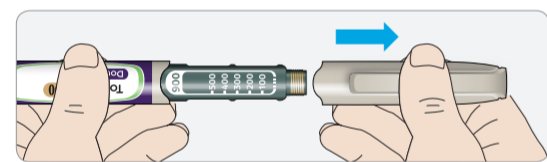
STEP 1: Check your pen

- ✓ Take a new pen out of the refrigerator at least one hour before injection. Cold insulin hurts more during the injection.

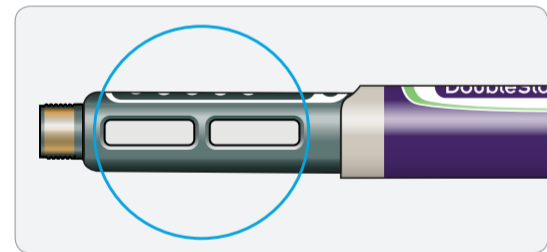
- A Check the name and expiration date on the label of the pen.**
- Make sure you have the correct insulin. This is especially important if you have other injector pens.
 - Never use the pen after the expiration date.



- B Take off the pen cap.**



- C Check that the insulin is clear.**
- Do not use the pen if the insulin looks cloudy, colored or contains particles.



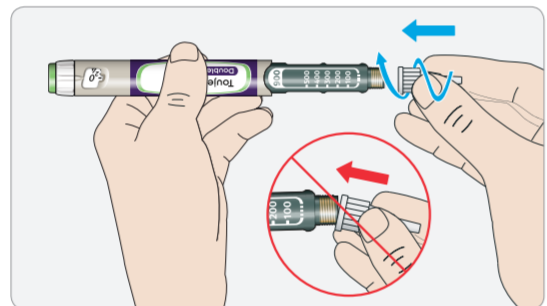
STEP 2 - Attach a new needle

- ✓ Always use a new sterile needle for each injection. This helps prevent blockage of needles, contamination of the preparation or infection in the patient.
- ✓ Only use needles that are compatible for use with Toujeo DoubleStar (e.g., needles from the companies Artana, Ypsomed, BD or Owen Mumford), that are 8 mm long or shorter.

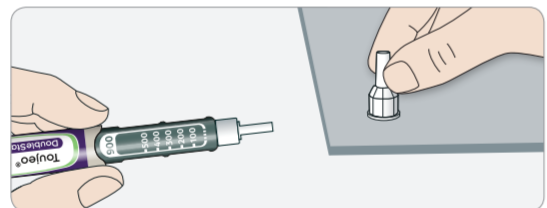
- A Take a new needle and peel off its protective seal.**



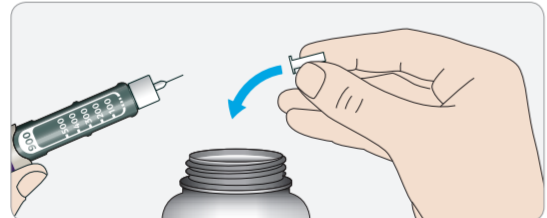
- B Keep the needle straight opposite the pen and screw it onto the pen until fixed. Do not overtighten.**



- C Pull off the outer needle cap. Keep this for later.**



- D Pull off the inner needle cap and throw away.**

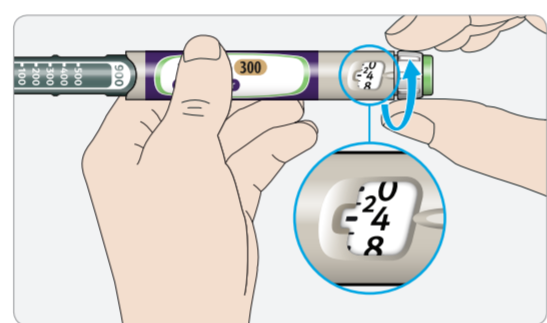


- i Handling needles**
- Take care when handling needles – this is to prevent needle injury and cross-infection.

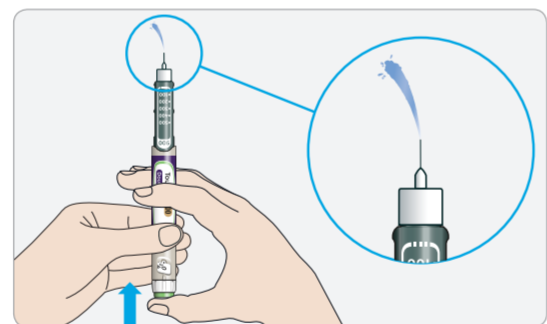
STEP 3 - Do a safety test

- ✓ **Always do a safety test before each injection.** This is to:
 - Check that your pen and the needle are working properly.
 - Make sure that you get the correct insulin dose.
- ✓ **If the pen is new, perform a safety test before you use it for the first time, until you see insulin coming out of the tip of the needle.** If you see insulin coming out of the tip of the needle, the pen is ready for use. If you do not see insulin coming out before you take a dose, you may get too small a dose or may not get insulin at all. This can cause high blood sugar level.

- A Select 4 units by turning the dose selector until the dose pointer points to 4.**



- B Press the injection button all the way in.**
- When insulin comes out of the needle tip, your pen is working properly.



- C Repeat this step if no insulin appears:**
- **If you are using a new pen for the first time,** you may need to repeat this step **up to 6 times** before seeing insulin.
 - Do not use your pen if there is still no insulin coming out of the tip of the needle. Use a new pen.
 - **For all injections,** if no insulin comes out, the needle may be blocked. If this happens:
 - change the needle (see STEP 6 and STEP 2).
 - then repeat the safety test (STEP 3A and 3B).
 - Do not use your pen if there is still no insulin coming out of the needle tip. Use a new pen.
 - Never use a syringe to remove insulin from your pen.

- i If you see air bubbles**
- You may see air bubbles in the insulin. This is normal; they will not harm you.

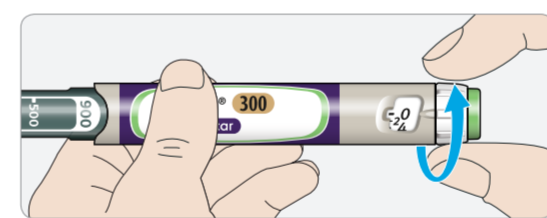
STEP 4 - Select the dose

- ✗ Never select a dose or press the injection button without a needle attached. This may damage the pen.
- Toujeo DoubleStar is meant to supply the number of insulin units prescribed by the doctor to you. Do not recalculate for each dose.

- A Make sure a needle is attached and that the dose is set to "0".**



- B Turn the dose selector until the dose pointer lines up with your dose.**
- Set the dose by turning the dose selector to the line in the dose window. Each line equals 2 units.
 - The dial clicks as you turn it.
 - **Do not set your dose by counting "clicks".** You may set the wrong dose. This may cause you to get too much insulin or not enough insulin.
 - Always check the number in the dose window to confirm that you selected the correct dose.
 - If you turned past your dose, you can turn back again.
 - If there is not enough insulin doses left in your pen for your dose, the dose selector will stop at the number of units left.
 - If you cannot select your full dose, split the dose into two injections or use a new pen. If you use a new pen, perform a safety test (see STEP 3).



How to read the dose window

The dose selector is set to 2-unit intervals. Each line in the dose window represents an even number.



60 units selected



58 units selected

- i Units of insulin in your pen**
- Your pen contains 300 units of insulin. You can select doses from 2 to 160 units in steps of 2 units each time. Each pen contains more than one dose.
 - You can see roughly how many units of insulin are left by looking at where the plunger is on the insulin scale.

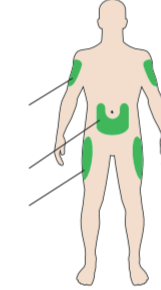
STEP 5 - Inject your dose

- ✗ If you find it hard to press the injection button in, do not use force as this may break your pen.
- See section **i** below for help.

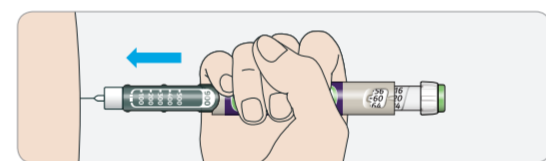
- A Choose an injection site as shown in the picture.**

Injection sites

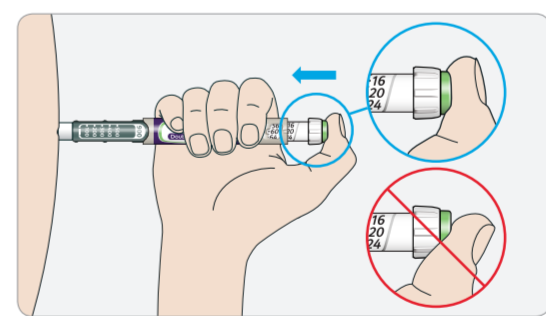
- Upper arms
- Abdomen
- Thighs



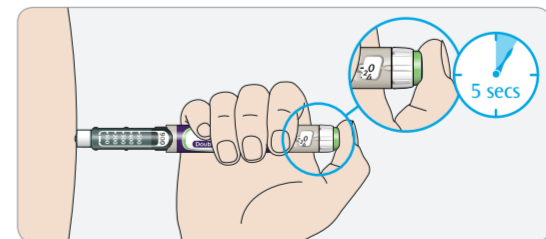
- B Push the needle into your skin as shown by your doctor, pharmacist or nurse.**
- Do not touch the injection button yet.



- C Place your thumb on the injection button. Press all the way in and hold.**
- Do not press at an angle – your thumb could block the dose selector from turning.



- D Keep the injection button held in and when you see "0" in the dose window, slowly count to 5.**
- This will make sure you get your full dose.



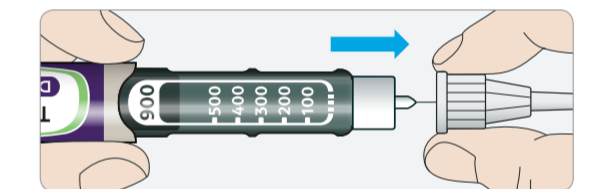
- E After slowly counting to 5, release the injection button. Then remove the needle from your skin.**

- i If you find it hard to press the button in:**
- Change the needle (see STEP 6 and STEP 2) and then do a safety test (see STEP 3).
 - If you still find it hard to press in, use a new pen.
 - Never use a syringe to remove insulin from your pen.

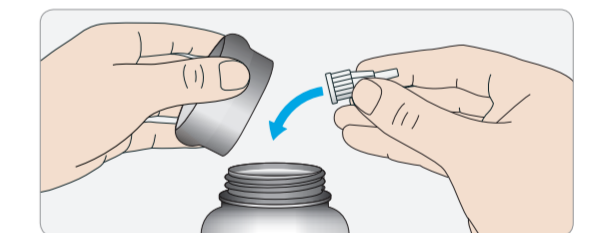
STEP 6 - Remove the needle

- ✓ Take care when handling needles – this is to prevent needle injury and cross-infection.
- ✗ Never put the inner needle cap back on.

- A Put the outer needle cap back on the needle, and use it to take the needle off the pen.**
- To reduce the risk of needle injury, never replace the inner needle cap.
 - If your injection is given by another person, or if you are giving an injection to another person, special caution must be taken by the other person when removing and disposing of the needle.
 - Follow recommended safety measures for removal and disposal of needles (contact your medical staff) in order to reduce the risk of accidental needle injury and transmission of infectious diseases.



- B Throw away the used needle in a puncture-resistant container, or as instructed by the pharmacist.**



- C Put the pen cap back on.**
- Do not put the pen back in the refrigerator.

