

## FULL PRESCRIBING INFORMATION

### 1. NAME OF THE MEDICINAL PRODUCT

JAYPIRCA® 50 mg

Film-coated tablets for oral use

**Active ingredient and its quantity:**

Each tablet contains: Pirtobrutinib 50 mg

JAYPIRCA® 100 mg

Film-coated tablets for oral use

**Active ingredient and its quantity:**

Each tablet contains: Pirtobrutinib 100 mg

For the full list of inactive ingredients, see section 10.

### 2 INDICATIONS AND USAGE

#### 2.1 Mantle Cell Lymphoma

JAYPIRCA as monotherapy is indicated for the treatment of adult patients with relapsed or refractory mantle cell lymphoma (MCL) who have been previously treated with a Bruton's tyrosine kinase (BTK) inhibitor.

### 3 DOSAGE AND ADMINISTRATION

#### 3.1 Recommended Dosage

The recommended dosage of JAYPIRCA is 200 mg orally once daily until disease progression or unacceptable toxicity.

Advise patients of the following:

- Swallow tablets whole with water. Do not cut, crush, or chew tablets.
- Take JAYPIRCA at the same time each day. JAYPIRCA may be taken with or without food.
- If a dose of JAYPIRCA is missed by more than 12 hours, do not make up the dose and take the next dose as scheduled.

#### 3.2 Dosage Modifications for Adverse Reactions

Recommended dosage modifications of JAYPIRCA for adverse reactions are presented in Table 1 [see *Warnings and Precautions* (6.1, 6.2, 6.3, and 6.4)].

**Table 1: Recommended Dosage Modification of JAYPIRCA for Adverse Reactions**

Adverse Reaction	Occurrences Requiring Dosage Modification	Modification (Starting Dosage: 200 mg once daily)
<ul style="list-style-type: none"> <li>• Grade 3 or greater non-hematologic toxicity<sup>a</sup></li> <li>• Absolute neutrophil count &lt; 1 to 0.5 x 10<sup>9</sup>/L with fever and/or infection</li> <li>• Absolute neutrophil count &lt; 0.5 x 10<sup>9</sup>/L lasting 7 or more days</li> <li>• Platelet count &lt; 50 to 25 x 10<sup>9</sup>/L with bleeding</li> <li>• Platelet count &lt; 25 x 10<sup>9</sup>/L</li> </ul>	<b>First occurrence</b>	Interrupt JAYPIRCA until recovery to Grade 1 or baseline; restart at original dosage (200 mg once daily) <sup>a</sup> .
	<b>Second occurrence</b>	Interrupt JAYPIRCA until recovery to Grade 1 or baseline; restart at 100 mg once daily.
	<b>Third occurrence</b>	Interrupt JAYPIRCA until recovery to Grade 1 or baseline; restart at 50 mg once daily.
	<b>Fourth occurrence</b>	Discontinue JAYPIRCA.

Dose modification is not recommended for asymptomatic lymphocytosis. Asymptomatic lipase increase may not necessarily warrant dose modification.

<sup>a</sup> Evaluate the benefit-risk before resuming treatment at the same dose for a Grade 4 non-hematological toxicity.

### 3.3 Dosage Modifications for Patients with Severe Renal Impairment

For patients with severe renal impairment (eGFR 15-29 mL/min), reduce the JAYPIRCA dose to 100 mg once daily if the current dose is 200 mg once daily otherwise reduce the dose by 50 mg. If the current dosage is 50 mg once daily, discontinue JAYPIRCA [see *Use in Specific Populations (9.7), Clinical Pharmacology (12.3)*]. No dosage adjustment of JAYPIRCA is recommended in patients with mild to moderate renal impairment (eGFR 30-89 mL/min).

### 3.4 Dosage Modifications for Concomitant Use with Strong CYP3A Inhibitors

Avoid concomitant use of strong CYP3A inhibitors with JAYPIRCA [see *Drug Interactions (8.1), Clinical Pharmacology (12.3)*]. If concomitant use of a strong CYP3A inhibitor is unavoidable, reduce the JAYPIRCA dose by 50 mg. If the current dosage is 50 mg once daily, interrupt JAYPIRCA treatment for the duration of strong CYP3A inhibitor use. After discontinuation of a strong CYP3A inhibitor for 5 half-lives, resume the JAYPIRCA dose that was taken prior to initiating the strong CYP3A inhibitor.

### 3.5 Dosage Modifications for Concomitant Use with CYP3A Inducers

Avoid concomitant use of strong or moderate CYP3A inducers with JAYPIRCA [see *Drug Interactions (8.1), Clinical Pharmacology (12.3)*]. If concomitant use with moderate CYP3A inducers is unavoidable and the current dosage of JAYPIRCA is 200 mg once daily, increase the dose to 300 mg. If the current dosage is 50 mg or 100 mg once daily, increase the dose by 50 mg.

## 4 DOSAGE FORMS AND STRENGTHS

Tablets:

Each 50 mg tablet is blue, arc-triangle shaped, film-coated, and debossed with "Lilly 50" on one side and "6902" on the other side.

Each 100 mg tablet is blue, round, film-coated, and debossed with "Lilly 100" on one side and "7026" on the other side.

## 5 CONTRAINDICATIONS

Hypersensitivity to the active substance or to any of the excipients listed in section 10.

## 6 WARNINGS AND PRECAUTIONS

### 6.1 Infections

Fatal and serious infections (including bacterial, viral, or fungal infections) and opportunistic infections have occurred in patients treated with JAYPIRCA. In the clinical trial, Grade 3 or higher infections occurred in 24% of 593 patients, most commonly pneumonia (14%), with fatal infections occurring in 4.4% of patients. Sepsis occurred in 6% of patients and febrile neutropenia in 4%. Opportunistic infections after treatment with JAYPIRCA have included, but are not limited to, *Pneumocystis jirovecii* pneumonia and fungal infection [see *Adverse Reactions (7.1)*].

Consider prophylaxis, including vaccinations and antimicrobial prophylaxis, in patients who are at increased risk for infections, including opportunistic infections. Monitor patients for signs and symptoms of infection, evaluate promptly, and treat appropriately. Based on severity, reduce dose, temporarily withhold, or permanently discontinue JAYPIRCA [see *Dosage and Administration (3.2)*].

### 6.2 Hemorrhage

Fatal and serious hemorrhage has occurred with JAYPIRCA. Major hemorrhage (defined as Grade 3 or higher bleeding or any central nervous system bleeding) occurred in 3% of 593 patients treated with JAYPIRCA, including gastrointestinal hemorrhage; fatal hemorrhage occurred in 0.3% of patients. Bleeding of any grade, excluding bruising and petechiae, occurred in 17% of patients [see *Adverse Reactions (7.1)*].

Major hemorrhage occurred in 2.3% of patients taking JAYPIRCA without antithrombotic agents and 0.7% of patients taking JAYPIRCA with antithrombotic agents. Consider the risks and benefits of antithrombotic agents when

co-administered with JAYPIRCA. Monitor patients for signs of bleeding. Based on severity of bleeding, reduce dose, temporarily withhold, or permanently discontinue JAYPIRCA [see *Dosage and Administration* (3.2)].

Consider the benefit-risk of withholding JAYPIRCA for 3 to 7 days pre- and post-surgery depending upon the type of surgery and risk of bleeding.

### 6.3 Cytopenias

JAYPIRCA can cause cytopenias, including neutropenia, thrombocytopenia, and anemia.

In the clinical trial, Grade 3 or 4 cytopenias, including decreased neutrophils (26%), decreased platelets (12%), and decreased hemoglobin (12%) developed in patients treated with JAYPIRCA. Grade 4 decreased neutrophils developed in 14% of patients and Grade 4 decreased platelets developed in 6% of patients [see *Adverse Reactions* (7.1)].

Monitor complete blood counts regularly during treatment. Based on severity, reduce dose, temporarily withhold, or permanently discontinue JAYPIRCA [see *Dosage and Administration* (3.2)].

### 6.4 Cardiac Arrhythmias

Cardiac arrhythmias, including atrial fibrillation and atrial flutter were reported in recipients of JAYPIRCA. Atrial fibrillation or flutter were reported in 3.2% of patients, with Grade 3 or 4 atrial fibrillation or flutter reported in 1.5% of 593 patients in the clinical trial [see *Adverse Reactions* (7.1)]. Other serious cardiac arrhythmias such as supraventricular tachycardia and cardiac arrest occurred in 0.5% of patients. Patients with cardiac risk factors, such as hypertension, or previous arrhythmias may be at increased risk.

Monitor for signs and symptoms of arrhythmias (e.g., palpitations, dizziness, syncope, dyspnea) and manage appropriately. Based on severity, reduce dose, temporarily withhold, or permanently discontinue JAYPIRCA [see *Dosage and Administration* (3.2)].

### 6.5 Second Primary Malignancies

Second primary malignancies, including non-skin carcinomas, developed in 9% of 593 patients treated with JAYPIRCA monotherapy. The most frequent malignancy was non-melanoma skin cancer, reported in 4.6% of 593 patients. Other second primary malignancies included solid tumors (including genitourinary and breast cancers) and melanoma. Advise patients to use sun protection and monitor patients for the development of second primary malignancies.

### 6.6 Hepatotoxicity, Including Drug-Induced Liver Injury

Hepatotoxicity, including severe, life-threatening, and potentially fatal cases of drug-induced liver injury (DILI), has occurred in patients treated with Bruton tyrosine kinase inhibitors, including JAYPIRCA.

Evaluate bilirubin and transaminases at baseline and throughout treatment with JAYPIRCA. For patients who develop abnormal liver tests after JAYPIRCA, monitor more frequently for liver test abnormalities and clinical signs and symptoms of hepatic toxicity. If DILI is suspected, withhold JAYPIRCA. Upon confirmation of DILI, discontinue JAYPIRCA.

### 6.7 Embryo-Fetal Toxicity

Based on findings in animals, JAYPIRCA can cause fetal harm when administered to a pregnant woman. In animal reproduction studies, administration of pirtobrutinib to pregnant rats during the period of organogenesis caused embryo-fetal toxicity including embryo-fetal mortality and malformations at maternal exposures (AUC) approximately 3-times the recommended dose of 200 mg once daily. Advise pregnant women of the potential risk to a fetus. Advise females of reproductive potential to use effective contraception during treatment with JAYPIRCA and for one week after the last dose [see *Use in Specific Populations* (9.1, 9.3)]

## 7 ADVERSE REACTIONS

The following clinically significant adverse reactions are described elsewhere in the labeling:

- Infections [see *Warnings and Precautions* (6.1)]
- Hemorrhage [see *Warnings and Precautions* (6.2)]
- Cytopenias [see *Warnings and Precautions* (6.3)]
- Atrial Fibrillation and Atrial Flutter [see *Warnings and Precautions* (6.4)]
- Second Primary Malignancies [see *Warnings and Precautions* (6.5)]
- Hepatotoxicity, including DILI [see *Warnings and Precautions* (6.6)]

## 7.1 Clinical Trials Experience

Because clinical trials are conducted under widely varying conditions, adverse reaction rates observed in the clinical trials of a drug cannot be compared to rates in the clinical trials of another drug and may not reflect the rates observed in the general patient population.

The data in the WARNINGS AND PRECAUTIONS reflect exposure to JAYPIRCA as a single-agent, administered at 200 mg once daily in 593 patients with hematologic malignancies in the BRUIN study. Among these 593 patients, the median duration of exposure was 10 months, 62% were exposed for at least 6 months and 45% were exposed for at least one year.

In this pooled safety population, the most common ( $\geq 20\%$ ) adverse reactions, including laboratory abnormalities, were decreased neutrophil count (46%), decreased hemoglobin (39%), fatigue (32%), decreased lymphocyte count (31%), musculoskeletal pain (30%), decreased platelet count (29%), diarrhea (24%), COVID-19 (22%), bruising (21%), and cough (20%).

### Mantle Cell Lymphoma

#### **BRUIN**

The safety of JAYPIRCA was evaluated in the BRUIN trial in patients with MCL who received a prior BTK inhibitor [see *Clinical Studies (14.1)*]. The trial required a platelet count  $\geq 50 \times 10^9/L$ , absolute neutrophil count  $\geq 0.75 \times 10^9/L$ , hepatic transaminases  $\leq 2.5$  times upper limit of normal (ULN), and an ECOG performance status of 0 to 2. The trial excluded patients with active central nervous system (CNS) involvement by lymphoma, significant cardiovascular disease, major bleeding or grade  $\geq 3$  arrhythmia with a prior BTK inhibitor, prolonged QTc interval, or need for a strong CYP3A inhibitor or inducer or strong P-gp inhibitor.

Patients received JAYPIRCA 200 mg orally once daily until disease progression or unacceptable toxicity ( $n = 128$ ); 36% were exposed for 6 months or longer and 10% were exposed for at least one year. The median number of prior therapies was 3 (range: 1-9). The median age was 71 years (range: 46 to 88 years) and 80% of patients were male. Race was reported for all patients; 78% were White, 14% were Asian, 2.3% were Black, and 2.3% were Hispanic or Latino.

Serious adverse reactions occurred in 38% of patients who received JAYPIRCA. Serious adverse reactions that occurred in  $\geq 2\%$  of patients were pneumonia (14%), COVID-19 (4.7%), musculoskeletal pain (3.9%), hemorrhage (2.3%), pleural effusion (2.3%), and sepsis (2.3%). Fatal adverse reactions within 28 days of the last dose of JAYPIRCA occurred in 7% of patients, most commonly due to infections (4.7%) including COVID-19 (3.1% of all patients).

Adverse reactions led to dose reductions in 4.7%, treatment interruption in 32%, and permanent discontinuation of JAYPIRCA in 9%. Adverse reactions that resulted in dosage modification in  $> 5\%$  of patients included pneumonia and neutropenia. Adverse reactions which resulted in permanent discontinuation of JAYPIRCA in  $> 1\%$  of patients included pneumonia.

The most common adverse reactions ( $\geq 15\%$ ), excluding laboratory terms, were fatigue, musculoskeletal pain, diarrhea, edema, dyspnea, pneumonia, and bruising.

Table 2 summarizes select adverse reactions in BRUIN.

**Table 2: Adverse Reactions ( $\geq 10\%$ ) in Patients with MCL Who Received JAYPIRCA**

	JAYPIRCA 200 mg once daily	
	N = 128	
Adverse Reactions <sup>a</sup>	All Grades (%)	Grade 3-4 (%)
<b>General Disorders</b>		
Fatigue	29	1.6
Edema	18	0.8
Fever	13	-
<b>Musculoskeletal and Connective Tissue Disorders</b>		
Musculoskeletal pain	27	3.9
Arthritis or arthralgia	12	0.8

	<b>JAYPIRCA 200 mg once daily</b>	
	<b>N = 128</b>	
<b>Gastrointestinal Disorders</b>		
Diarrhea	19	-
Constipation	13	-
Abdominal pain	11	0.8
Nausea	11	-
<b>Respiratory, thoracic, and mediastinal disorders</b>		
Dyspnea	17	2.3
Cough	14	-
<b>Injury</b>		
Bruising	16	-
<b>Infections</b>		
Pneumonia	16 <sup>b</sup>	14
Upper respiratory tract infections	10	0.8
<b>Nervous system disorders</b>		
Peripheral neuropathy	14	0.8
Dizziness	10	-
<b>Skin and subcutaneous disorders</b>		
Rash	14	-
<b>Vascular disorders</b>		
Hemorrhage	11 <sup>c</sup>	3.1

<sup>a</sup> Each term listed includes other related terms.

<sup>b</sup> includes 1 fatality from COVID-19 pneumonia

<sup>c</sup> includes 1 fatality from hemorrhage

Clinically relevant adverse reactions in < 10% include vision changes, memory changes, headache, urinary tract infection, herpesvirus infection, and tumor lysis syndrome.

Table 3 summarizes laboratory abnormalities in BRUIN.

**Table 3: Select Laboratory Abnormalities (≥ 10%) That Worsened from Baseline in Patients with MCL Who Received JAYPIRCA**

Laboratory Abnormality	<b>JAYPIRCA<sup>a</sup> 200 mg once daily</b>	
	<b>All Grades (%)</b>	<b>Grade 3 or 4 (%)</b>
<b>Hematology</b>		
Hemoglobin decreased	42	9
Platelet count decreased	39	14
Neutrophil count decreased	36	16
Lymphocyte count decreased	32	15

<b>Chemistry</b>		
Creatinine increased	30	1.6
Calcium decreased	19	1.6
AST increased	17	1.6
Potassium decreased	13	1.6
Sodium decreased	13	-
Lipase increased	12	4.4
Alkaline phosphatase increased	11	-
ALT increased	11	1.6
Potassium increased	11	0.8

<sup>a</sup> The denominator used to calculate the rate varied from 90 to 127 based on the number of patients with a baseline value and at least one post-treatment value.

Grade 4 laboratory abnormalities in > 5% of patients included neutrophils decreased (10%), platelets decreased (7%), and lymphocytes decreased (6%).

**Lymphocytosis:** Upon initiation of JAYPIRCA, a temporary increase in lymphocyte counts (defined as absolute lymphocyte count increased  $\geq 50\%$  from baseline and a post-baseline value  $\geq 5,000/\mu\text{L}$ ) occurred in 34% of MCL patients in BRUIN. The median time to onset of lymphocytosis was 1.1 weeks, with 75% of cases occurring within 2.1 weeks, and the median duration was 11 weeks.

### Reporting of suspected adverse reactions

Reporting suspected adverse reactions after authorization of the medicinal product is important. It allows continued monitoring of the benefit/risk balance of the medicinal product. Any suspected adverse events should be reported to the Ministry of Health according to the National Regulation by using an online form <https://sideeffects.health.gov.il>

## 8 DRUG INTERACTIONS

### 8.1 Effect of Other Drugs on JAYPIRCA

#### Strong CYP3A Inhibitors

Pirtobrutinib is a CYP3A substrate. Concomitant use of JAYPIRCA with a strong CYP3A inhibitor increased pirtobrutinib systemic exposure [see *Clinical Pharmacology (12.3)*], which may increase the risk of JAYPIRCA adverse reactions. Avoid concomitant use of strong CYP3A inhibitors during treatment with JAYPIRCA. If concomitant use of strong CYP3A inhibitors is unavoidable, reduce the JAYPIRCA dosage [see *Dosage and Administration (3.4)*].

#### Strong or Moderate CYP3A Inducers

Concomitant use of JAYPIRCA with a strong or moderate CYP3A inducer decreased pirtobrutinib systemic exposure [see *Clinical Pharmacology (12.3)*], which may reduce JAYPIRCA efficacy. Avoid concomitant use of JAYPIRCA with strong or moderate CYP3A inducers. If concomitant use of moderate CYP3A inducers is unavoidable, increase the JAYPIRCA dosage [see *Dosage and Administration (3.5)*].

### 8.2 Effect of JAYPIRCA on Other Drugs

#### Sensitive CYP2C8, CYP2C19, CYP3A, P-gp, or BCRP Substrates

JAYPIRCA is a P-gp inhibitor, a moderate CYP2C8 and BCRP inhibitor, and a weak CYP2C19 and CYP3A inhibitor. Concomitant use of JAYPIRCA with sensitive P-gp, CYP2C8, BCRP, CYP2C19, or CYP3A substrates increased their plasma concentrations [see *Clinical Pharmacology (12.3)*], which may increase the risk of adverse reactions related to these substrates for drugs which are sensitive to minimal concentration changes. Follow recommendations for sensitive CYP2C8, CYP2C19, CYP3A, P-gp, or BCRP substrates provided in their approved product labeling.

## **9 USE IN SPECIFIC POPULATIONS**

### **9.1 Pregnancy**

#### Risk Summary

Based on findings from animal studies, JAYPIRCA can cause fetal harm when administered to a pregnant woman. There are no available data on JAYPIRCA use in pregnant women to evaluate for a drug-associated risk. In an animal reproduction study, administration of pirtobrutinib to pregnant rats during organogenesis resulted in adverse developmental outcomes, including structural abnormalities, altered fetal growth, and embryo-fetal mortality, at maternal exposures approximately 3-times those in patients at the recommended daily dose of 200 mg (see *Data*). Advise pregnant women of the potential risk to a fetus.

#### Data

##### *Animal Data*

In an embryo-fetal development study in rats, pregnant animals were administered oral doses of pirtobrutinib at up to 500 mg/kg twice daily during the period of organogenesis. Doses  $\geq$  375 mg/kg twice daily caused decreased fetal body weights and increased incidence of malformations and variations in the urinary tract (including absent or abnormal ureters and kidneys), reproductive tract (malpositioned ovaries and misshapen uterus), and bone (misshapen sternbrae). At 500 mg/kg twice daily, total resorption was observed. At 375 mg/kg twice daily in rats, the maternal systemic exposures (AUC) were approximately 3 times the human exposure at 200 mg once daily.

### **9.2 Lactation**

#### Risk Summary

There are no data on the presence of pirtobrutinib in human milk or the effects on the breastfed child or milk production. Because of the potential for serious adverse reactions in the breastfed child, advise women not to breastfeed during treatment with JAYPIRCA and for one week after the last dose.

### **9.3 Females and Males of Reproductive Potential**

Based on findings from animal studies, JAYPIRCA can cause fetal harm when administered to a pregnant woman [see *Use in Specific Populations (9.1)*].

#### Pregnancy Testing

Verify pregnancy status in females of reproductive potential prior to initiating JAYPIRCA.

#### Contraception

##### *Females*

Advise females of reproductive potential to use effective contraception during treatment with JAYPIRCA and for one week after the last dose.

### **9.4 Pediatric Use**

Safety and effectiveness of JAYPIRCA have not been established in pediatric patients.

### **9.5 Geriatric Use**

Of the patients with MCL who received the 200 mg dose of JAYPIRCA in BRUIN, 93 (78%) were 65 years of age and older and 39 (33%) were 75 years and older [see *Clinical Studies (14.1)*]. Clinical studies of JAYPIRCA did not include sufficient numbers of patients with MCL who were less than 65 years of age to determine whether older patients respond differently from younger adult patients.

In the pooled safety population in patients with hematologic malignancies, 401 (68%) were 65 years of age and older, while 154 (26%) were 75 years of age and older. Patients aged 65 years and older experienced higher rates of Grade 3 and higher adverse reactions and serious adverse reactions compared to patients who were less than 65 years of age.

## 9.6 Renal Impairment

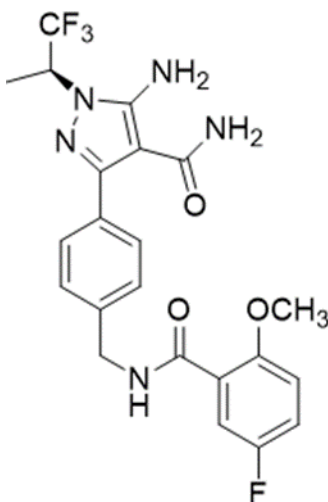
Severe renal impairment (eGFR 15-29 mL/min) increases pirtobrutinib exposure [see *Clinical Pharmacology* (12.3)]. Reduce the JAYPIRCA dosage in patients with severe renal impairment [see *Dosage and Administration* (3.3)]. No dosage adjustment of JAYPIRCA is recommended in patients with mild (60-89 mL/min) or moderate (30-59 mL/min) renal impairment.

## 9.7 Hepatic Impairment

No dosage adjustment of JAYPIRCA is recommended in patients with mild hepatic impairment (total bilirubin  $\leq$  upper limit of normal (ULN) and aspartate aminotransferase (AST)  $>$  ULN or total bilirubin  $>$  1 to  $1.5 \times$  ULN and any AST), moderate hepatic impairment (total bilirubin  $>$  1.5 to  $3 \times$  ULN and any AST), or severe hepatic impairment (total bilirubin  $>$   $3 \times$  ULN and any AST) [see *Clinical Pharmacology* (12.3)].

## 10 DESCRIPTION

Pirtobrutinib is a kinase inhibitor. It is an orally available, small molecule ATP-competitive inhibitor of BTK. The active pharmaceutical ingredient is pirtobrutinib with the molecular formula  $C_{22}H_{21}F_4N_5O_3$  and a molecular weight of 479.44 g/mol. The chemical name for pirtobrutinib is 5-amino-3- $\{4-[(5\text{-fluoro-2-methoxybenzamido})\text{methyl}]phenyl\}$ -1- $[(2S)\text{-}1,1,1\text{-trifluoropropan-2-yl}]\text{-}1H\text{-pyrazole-4-carboxamide}$ .



Pirtobrutinib is a white to practically white to yellow to brown solid. The aqueous solubility of pirtobrutinib is considered practically insoluble, or insoluble, across the pH 1 to pH 7 range.

Pirtobrutinib tablets are supplied as 50 mg or 100 mg film-coated, debossed tablets for oral administration.

Each tablet contains inactive ingredients of Microcrystalline Cellulose, Lactose Monohydrate, Croscarmellose Sodium, Silicon Dioxide, Magnesium Stearate, Hypromellose Acetate Succinate.

The tablet film coating material contains Color Mixture Blue 03K105008.

Color Mixture: Hypromellose, Titanium Dioxide, Triacetin, FD&C Blue #2.

## 11. EFFECTS ON ABILITY TO DRIVE AND USE MACHINES

JAYPIRCA has a minor influence on the ability to drive and use machines. Fatigue, dizziness, and asthenia have been reported in some patients during treatment with JAYPIRCA and should be considered when assessing a patient's ability to drive or operate machines.



## 12 CLINICAL PHARMACOLOGY

### 12.1 Mechanism of action

Pirtobrutinib is a small molecule, noncovalent inhibitor of BTK. BTK is a signaling protein of the B-cell antigen receptor (BCR) and cytokine receptor pathways. In B-cells, BTK signaling results in activation of pathways necessary for B-cell proliferation, trafficking, chemotaxis, and adhesion. Pirtobrutinib binds to wild type BTK and BTK harboring C481 mutations, leading to inhibition of BTK kinase activity. In nonclinical studies, pirtobrutinib inhibited BTK-mediated B-cell CD69 expression and inhibited malignant B-cell proliferation. Pirtobrutinib showed dose-dependent anti-tumor activities in BTK wild type and BTK C481S mutant mouse xenograft models.

### 12.2 Pharmacodynamics

At the recommended dosage of 200 mg once daily, pirtobrutinib trough concentrations exceeded the BTK IC<sub>96</sub>. BTK occupancy is maintained throughout the dosing interval, regardless of the intrinsic rate of BTK turnover.

#### Cardiac Electrophysiology

The effect of a single 900 mg dose of pirtobrutinib (equivalent to approximately 2 times higher than the concentrations achieved at steady state at the recommended dosage of 200 mg once daily) on the QTc interval was evaluated in a placebo-controlled and positive-controlled study in 30 healthy subjects. Pirtobrutinib had no clinically meaningful effect on the change in QTcF interval (i.e., > 10 ms) and there was no relationship between pirtobrutinib exposure and change in QTc interval.

### 12.3 Pharmacokinetics

The pharmacokinetics of pirtobrutinib were characterized in healthy subjects and in patients with cancer. Pirtobrutinib exposure (AUC) and C<sub>max</sub> increases proportionally following single oral doses ranging from 300 mg to 800 mg (1.5 to 4 times the approved recommended dosage) and once daily doses ranging from 25 – 300 mg (0.125 to 1.5 times the recommended dosage). Steady state was achieved within 5 days of once daily dosing, and the mean (CV%) accumulation ratio was 1.63 (26.7%) based on AUC after administration of 200 mg dosages.

Following administration of the recommended dosage, the geometric mean (CV%) steady-state AUC and C<sub>max</sub> of pirtobrutinib were 90300 h\*ng/mL (40%) and 6380 ng/mL (26%), respectively. The geometric mean (CV%) AUC<sub>0-24</sub> and C<sub>max</sub> of pirtobrutinib on Cycle 1 Day 8 were 81800 h\*ng/mL (66.6%) and 3670 ng/mL (89.5%), respectively.

#### Absorption

The absolute bioavailability of pirtobrutinib after a single oral 200 mg dose is 85.5% (range 75.9% to 90.9%). The median time (range) to reach peak plasma concentration (t<sub>max</sub>) is approximately 2 hours (0.833 to 4.15 hours).

#### *Effect of Food*

No clinically significant differences in the pharmacokinetics of pirtobrutinib were observed following administration of a high-fat, high-calorie meal (approximately 800 to 1000 calories with 150 calories from protein, 250 calories from carbohydrate, and 500 to 600 calories from fat) to healthy subjects. A high-fat meal decreased the C<sub>max</sub> of pirtobrutinib by 23% and delayed t<sub>max</sub> by 1 hour. There was no effect on pirtobrutinib AUC.

#### Distribution

The mean apparent central volume of distribution of pirtobrutinib is 34.1 L. Human protein binding of pirtobrutinib is 96% and is independent of concentration in vitro. Mean blood-to-plasma ratio is 0.79.

#### Elimination

The effective half-life of pirtobrutinib is approximately 19 hours and the mean (CV%) apparent clearance is 2.05 L/h (37.2%).

#### *Metabolism*

Pirtobrutinib is primarily metabolized by CYP3A4 and direct glucuronidation by UGT1A8 and UGT1A9, in vitro.

#### *Excretion*

Following a single radiolabeled dose of pirtobrutinib 200 mg to healthy subjects, 37% of the dose was recovered in feces (18% unchanged) and 57% in urine (10% unchanged).

Specific Populations

There were no clinically significant differences in the pharmacokinetics of pirtobrutinib based on age (range 22 – 95 years), sex, race/ethnicity (White 84%, Asian 7%), body weight (range 35.7 – 152 kg), mild (total bilirubin  $\leq$  upper limit of normal (ULN) and aspartate aminotransferase (AST)  $>$  ULN or total bilirubin  $>$  1 to  $1.5 \times$  ULN and any AST), moderate (total bilirubin  $>$  1.5 to  $3 \times$  ULN and any AST), or severe (total bilirubin  $>$   $3 \times$  ULN and any AST) hepatic impairment. The effect of other races/ethnicities on the pharmacokinetics of pirtobrutinib is unknown.

*Patients with Renal Impairment*

Following a single 200 mg oral dose, the AUC of pirtobrutinib in subjects with severe renal impairment (eGFR 15-29 mL/min) increased by 62% and mean unbound AUC increased by 68% compared to healthy subjects with normal renal function. There were no clinically significant differences in the pharmacokinetics of pirtobrutinib in subjects with mild (eGFR 60-89 mL/min) or moderate renal impairment (eGFR 30-59 mL/min). The effect of renal impairment requiring dialysis on the pharmacokinetics of pirtobrutinib is unknown.

Drug Interaction Studies*Clinical Studies and Model-Informed Approaches*

**Strong CYP3A Inhibitors:** Co-administration of a single 200 mg dose of pirtobrutinib with itraconazole (strong CYP3A inhibitor) increased AUC of pirtobrutinib by 49%.

**Moderate CYP3A Inhibitors:** Verapamil and diltiazem (moderate CYP3A inhibitors) are predicted to increase the AUC of pirtobrutinib by 30% and 20%, respectively.

**Strong CYP3A inducers:** Coadministration of a single 200 mg dose of pirtobrutinib with rifampin (strong CYP3A inducer) decreased the AUC of pirtobrutinib by 71%.

**Moderate CYP3A Inducers:** Efavirenz and bosentan (moderate CYP3A inducers) are predicted to decrease the AUC of pirtobrutinib by 49% and 27%, respectively.

**Gastric Reducing Agents:** No clinically significant differences in pirtobrutinib pharmacokinetics were observed when co-administered with omeprazole (a proton pump inhibitor).

**P-glycoprotein (P-gp) inhibitors:** No clinically significant differences in pirtobrutinib pharmacokinetics were observed when co-administered with itraconazole (P-gp inhibitor).

**CYP3A Substrates:** Pirtobrutinib increased the AUC and  $C_{max}$  of orally administered midazolam (sensitive CYP3A substrate) by 70% and 58%, respectively. Pirtobrutinib did not have a clinically meaningful effect on the exposure of intravenously administered midazolam.

**CYP2C8 Substrates:** Pirtobrutinib increased the AUC and  $C_{max}$  of repaglinide (sensitive CYP2C8 substrate) by 130% and 98%, respectively.

**CYP2C19 Substrates:** Pirtobrutinib increased the AUC and  $C_{max}$  of omeprazole (sensitive CYP2C19 substrate) by 56% and 49%, respectively.

**P-gp Substrates:** A single 200 mg dose of pirtobrutinib increased the AUC and  $C_{max}$  of digoxin (sensitive P-gp substrate) by 17% and 51%, respectively. Multiple doses of pirtobrutinib (200 mg daily) further increased the AUC and  $C_{max}$  of digoxin (sensitive P-gp substrate) up to 35% and 55%, respectively.

**BCRP Substrates:** Multiple doses of pirtobrutinib (200 mg daily) increased the AUC and  $C_{max}$  of rosuvastatin (sensitive BCRP substrate) by 140% and 146%, respectively.

**CYP1A2 and CYP2C9 Substrates:** Pirtobrutinib did not have a clinically meaningful effect on the exposures of caffeine (sensitive CYP1A2 substrate) or S-warfarin (moderate sensitive CYP2C9 substrate).

*In Vitro Studies*

**Cytochrome P450 (CYP) Enzymes:** Pirtobrutinib inhibits CYP2C8, CYP2C9, CYP3A, CYP1A2, CYP2B6, CYP2C19, and CYP2D6. Pirtobrutinib induces CYP3A4, CYP3A5, CYP2B6, and CYP2C19.

**Transporter Systems:** Pirtobrutinib inhibits P-gp and BCRP, but not OAT1, OAT3, OCT1, OCT2, OATP1B1, OATP1B3, MATE1, or MATE2-K. Pirtobrutinib is not a substrate of the hepatic transporters. Pirtobrutinib is a substrate of P-gp and BCRP, but not OCT1, OATP1B1, OATP1B3, or BSEP.

## 13 NONCLINICAL TOXICOLOGY

### 13.1 Carcinogenesis, mutagenesis, impairment of fertility

Carcinogenicity studies have not been conducted with pirtobrutinib.

Pirtobrutinib was not mutagenic in a bacterial mutagenicity (Ames) assay. Pirtobrutinib was aneugenic in *in vitro* micronucleus assays using human peripheral blood lymphocytes. Pirtobrutinib was not genotoxic in an *in vivo* rat bone marrow micronucleus assay at doses up to 2000 mg/kg.

Studies to assess the effects of pirtobrutinib on fertility have not been conducted. In repeat-dose toxicity studies of up to 3-months duration conducted with pirtobrutinib in rats and dogs, no effects on male or female reproductive organs were identified.

## 14 CLINICAL STUDIES

### 14.1 Mantle Cell Lymphoma

The efficacy of JAYPIRCA in patients with MCL was evaluated in BRUIN [NCT03740529], an open-label, international, multicohort, single-arm study of JAYPIRCA as monotherapy. Efficacy was based on 120 patients with MCL treated with JAYPIRCA who were previously treated with a BTK inhibitor. JAYPIRCA was given orally at a dose of 200 mg once daily and was continued until disease progression or unacceptable toxicity. Patients with active central nervous system lymphoma or allogeneic hematopoietic stem cell transplantation (HSCT) or CAR-T cell therapy within 60 days were excluded.

The median age was 71 years (range: 46 to 88 years); 79% were male; 78% were White, 14% Asian, 1.7% Black or African American. Seventy-eight percent of patients had the classic/leukemic variant of MCL, 12% had pleomorphic MCL, and 11% had blastoid MCL. The simplified Mantle Cell Lymphoma International Prognostic Index (sMIPI) score was low in 15%, intermediate in 59%, and high in 26% of patients. Patients received a median number of 3 prior lines of therapy (range: 1 to 9) with 93% having received 2 or more prior lines. All received 1 or more prior lines of therapy containing a BTK inhibitor; other prior therapies included chemoimmunotherapy in 88%, HSCT in 20%, lenalidomide in 18%, and CAR-T therapy in 9%. The most common prior BTK inhibitors received were ibrutinib (67%), acalabrutinib (30%), and zanubrutinib (8%). Patients may have received more than one prior BTK inhibitor; 83% of patients discontinued the last BTK inhibitor for refractory or progressive disease, 10% discontinued for toxicity, and 5% discontinued for other reasons.

Efficacy was based on overall response rate (ORR) and duration of response (DOR), as assessed by an independent review committee (IRC) using 2014 Lugano criteria. Efficacy results are shown in Table 4. Additionally, the Kaplan-Meier estimate for the DOR rate at 6 months was 65.3% (95% CI: 49.8, 77.1).

**Table 4: Efficacy Results per IRC in Patients with MCL Previously Treated with a BTK Inhibitor**

<b>Outcome</b>	<b>JAYPIRCA 200 mg once daily (N = 120)</b>
<b>Overall Response Rate <sup>a,b</sup></b>	
ORR, n	60 (50%)
(95% CI, %)	41, 59
CR, n	15 (13%)
PR, n	45 (38%)
<b>Time to Response</b>	
Median (range), months	1.8 (0.8, 4.2)
<b>Duration of Response <sup>c</sup></b>	
Number censored, n	36
Median DOR, months (95% CI)	8.3 (5.7, NE)

CI, confidence interval; CR, complete response; DOR, duration of response; PR, partial response; NE, not estimable.

<sup>a</sup> PET-CT scans were utilized in response assessments (in 41% of patients), with the remainder being assessed by CT scans only.

<sup>b</sup> ORR using CT scan-based assessments in all patients was 48% (95% CI: 38, 57) and CR rate was 13%.

<sup>c</sup> Based on Kaplan-Meier estimation. Estimated median follow-up was 7.3 months.

## 15 HOW SUPPLIED/STORAGE AND HANDLING

### 15.1 How Supplied

JAYPIRCA tablets are supplied as follows:

- JAYPIRCA 50 mg tablets are supplied in a bottle with child-resistant closure. Each bottle contains 30 tablets.
- JAYPIRCA 100 mg tablets are supplied in a bottle with child-resistant closure. Each bottle contains 60 tablets.
- JAYPIRCA 100 mg 30 tablets are supplied as a physician sample only.

Not all pack sizes may be marketed.

### 15.2 Storage and Handling

Do not store above 30°C.

The expiry date of the product is indicated on the packaging materials.

**16. Manufacturer:** Eli Lilly and Company, Lilly Corporate Center, Indianapolis, IN 46285, USA

**17. License Holder:** Eli Lilly Israel Ltd. 4 HaSheizaf St., P.O.Box 4246, Ra'anana 4366411

### 18. License Number:

JAYPIRCA 50 MG: 175-13-37717-99

JAYPIRCA 100 MG: 175-14-37718-99

X JAYPTB I 03

Revised in June 2024.

X JAYPTB I 03