

FULL PRESCRIBING INFORMATION

NAME OF THE MEDICINAL PRODUCT

Inlyta[®] 1 mg

Inlyta[®] 5 mg

QUALITATIVE AND QUANTITATIVE COMPOSITION

Inlyta 1 mg

Each film coated tablet contains 1 mg axitinib

Inlyta 5 mg

Each film coated tablet contains 5 mg axitinib

For the full list of excipients, see section " DESCRIPTION".

PHARMACEUTICAL FORM

Film coated tablets

1 INDICATIONS AND USAGE

INLYTA is indicated for the treatment of advanced renal cell carcinoma (RCC) after failure of one prior systemic therapy.

2 DOSAGE AND ADMINISTRATION

2.1 Recommended Dosing

The recommended starting oral dose of INLYTA is 5 mg twice daily. Administer INLYTA doses approximately 12 hours apart with or without food.

Important Administration Instructions

Advise patients to swallow INLYTA whole with a full glass of water. If the patient vomits or misses a dose, an additional dose should not be taken. Advise the patient to take the next prescribed dose at the usual time.

2.2 Dose Modification Guidelines

Dose increase or reduction is recommended based on individual safety and tolerability.

Over the course of treatment, patients who tolerate INLYTA for at least two consecutive weeks with no adverse reactions Grade >2 (according to the Common Toxicity Criteria for Adverse Events [CTCAE]), are normotensive, and are not receiving anti-hypertension medication, may have their dose increased. When a dose increase from 5 mg twice daily is recommended, the INLYTA dose may be increased to 7 mg twice daily, and further to 10 mg twice daily using the same criteria.

Over the course of treatment, management of some adverse drug reactions may require temporary interruption or permanent discontinuation and/or dose reduction of INLYTA therapy [*see Warnings and Precautions (5)*]. If dose reduction from 5 mg twice daily is required, the recommended dose is 3 mg twice daily. If additional dose reduction is required, the recommended dose is 2 mg twice daily.

Strong CYP3A4/5 Inhibitors

The concomitant use of strong CYP3A4/5 inhibitors should be avoided (e.g., ketoconazole, itraconazole, clarithromycin, atazanavir, indinavir, nefazodone, nelfinavir, ritonavir, saquinavir, telithromycin, and voriconazole). Selection of an alternate concomitant medication with no or minimal CYP3A4/5 inhibition potential is recommended. Although INLYTA dose adjustment has not been studied in patients receiving strong CYP3A4/5 inhibitors, if a strong CYP3A4/5 inhibitor must be co-administered, a dose decrease of INLYTA by approximately half is recommended, as this dose reduction is predicted to adjust the axitinib area under the plasma concentration vs time curve (AUC) to the range observed without inhibitors. The subsequent doses can be increased or decreased based on individual safety and tolerability. If co-administration of the strong inhibitor is discontinued, the INLYTA dose should be returned (after 3 – 5 half-lives of the inhibitor) to that used prior to initiation of the strong CYP3A4/5 inhibitor [*see Drug Interactions (7.1) and Clinical Pharmacology (12.3)*].

Hepatic Impairment

No starting dose adjustment is required when administering INLYTA to patients with mild hepatic impairment (Child-Pugh class A). Based on the pharmacokinetic data, the INLYTA starting dose should be reduced by approximately half in patients with baseline moderate hepatic impairment (Child-Pugh class B). The subsequent doses can be increased or decreased based on individual safety and tolerability. INLYTA has not been studied in patients with severe hepatic impairment (Child-Pugh class C) [*see Warnings and Precautions (5.12), Use in Specific Populations (8.6), and Clinical Pharmacology (12.3)*].

3 DOSAGE FORMS AND STRENGTHS

- 1 mg tablets of INLYTA: red, film-coated, oval tablets, debossed with “Pfizer” on one side and “1 XNB” on the other side.
- 5 mg tablets of INLYTA: red, film-coated, triangular tablets, debossed with “Pfizer” on one side and “5 XNB” on the other side.

4 CONTRAINDICATIONS

Hypersensitivity to the active substance or to any of the excipients listed in section 11.

5 WARNINGS AND PRECAUTIONS

5.1 Hypertension and Hypertensive Crisis

In a controlled clinical study with INLYTA for the treatment of patients with RCC, hypertension was reported in 145/359 patients (40%) receiving INLYTA and 103/355 patients (29%) receiving sorafenib. Grade 3/4 hypertension was observed in 56/359 patients (16%) receiving INLYTA and 39/355 patients (11%) receiving sorafenib. Hypertensive crisis was reported in 2/359 patients (<1%) receiving INLYTA and none of the patients receiving sorafenib. The median onset time for hypertension (systolic blood pressure >150 mmHg or diastolic blood pressure >100 mmHg) was within the first month of the start of INLYTA treatment and blood pressure increases have been observed as early as 4 days after starting INLYTA. Hypertension was managed with standard anti-hypertensive therapy. Discontinuation of INLYTA treatment due to hypertension occurred in 1/359 patients (<1%) receiving INLYTA and none of the patients receiving sorafenib [see Adverse Reactions (6.1)].

Blood pressure should be well-controlled prior to initiating INLYTA. Patients should be monitored for hypertension and treated as needed with standard anti-hypertensive therapy. In the case of persistent hypertension despite use of anti-hypertensive medications, reduce the INLYTA dose. Discontinue INLYTA if hypertension is severe and persistent despite anti-hypertensive therapy and dose reduction of INLYTA, and discontinuation should be considered if there is evidence of hypertensive crisis. If INLYTA is interrupted, patients receiving anti-hypertensive medications should be monitored for hypotension [see Dosage and Administration (2.2)].

5.2 Arterial Thromboembolic Events

In clinical trials, arterial thromboembolic events have been reported, including deaths. In a controlled clinical study with INLYTA for the treatment of patients with RCC, Grade 3/4 arterial thromboembolic events were reported in 4/359 patients (1%) receiving INLYTA and 4/355 patients (1%) receiving sorafenib. Fatal cerebrovascular accident was reported in 1/359 patients (<1%) receiving INLYTA and none of the patients receiving sorafenib [see Adverse Reactions (6.1)].

In clinical trials with INLYTA, arterial thromboembolic events (including transient ischemic attack, cerebrovascular accident, myocardial infarction, and retinal artery occlusion) were reported in 17/715 patients (2%), with two deaths secondary to cerebrovascular accident.

Use INLYTA with caution in patients who are at risk for, or who have a history of, these events. INLYTA has not been studied in patients who had an arterial thromboembolic event within the previous 12 months.

5.3 Venous Thromboembolic Events

In clinical trials, venous thromboembolic events have been reported, including deaths. In a controlled clinical study with INLYTA for the treatment of patients with RCC, venous thromboembolic events were reported in 11/359 patients (3%) receiving INLYTA and 2/355 patients (1%) receiving sorafenib. Grade 3/4 venous thromboembolic events were reported in 9/359 patients (3%) receiving INLYTA (including pulmonary embolism, deep vein thrombosis, retinal vein occlusion and retinal vein thrombosis) and 2/355 patients (1%) receiving sorafenib. Fatal pulmonary embolism was reported in 1/359 patients (<1%) receiving INLYTA and none of the patients receiving sorafenib. In clinical trials with INLYTA, venous thromboembolic events were reported in 22/715 patients (3%), with two deaths secondary to pulmonary embolism.

Use INLYTA with caution in patients who are at risk for, or who have a history of, these events. INLYTA has not been studied in patients who had a venous thromboembolic event within the previous 6 months.

5.4 Hemorrhage

In a controlled clinical study with INLYTA for the treatment of patients with RCC, hemorrhagic events were reported in 58/359 patients (16%) receiving INLYTA and 64/355 patients (18%) receiving sorafenib. Grade 3/4 hemorrhagic events were reported in 5/359 (1%) patients receiving INLYTA (including cerebral hemorrhage, hematuria, hemoptysis, lower gastrointestinal hemorrhage, and melena) and 11/355 (3%) patients receiving sorafenib. Fatal hemorrhage was reported in 1/359 patients (<1%) receiving INLYTA (gastric hemorrhage) and 3/355 patients (1%) receiving sorafenib.

INLYTA has not been studied in patients who have evidence of untreated brain metastasis or recent active gastrointestinal bleeding and should not be used in those patients. If any bleeding requires medical intervention, temporarily interrupt the INLYTA dose.

5.5 Cardiac Failure

In a controlled clinical study with INLYTA for the treatment of patients with RCC, cardiac failure was reported in 6/359 patients (2%) receiving INLYTA and 3/355 patients (1%) receiving sorafenib. Grade 3/4 cardiac failure was observed in 2/359 patients (1%) receiving INLYTA and 1/355 patients (<1%) receiving sorafenib. Fatal cardiac failure was reported in 2/359 patients (1%) receiving INLYTA and 1/355 patients (<1%) receiving sorafenib. Monitor for signs or symptoms of cardiac failure throughout treatment with INLYTA. Management of cardiac failure may require permanent discontinuation of INLYTA.

5.6 Gastrointestinal Perforation and Fistula Formation

In a controlled clinical study with INLYTA for the treatment of patients with RCC, gastrointestinal perforation was reported in 1/359 patients (<1%) receiving INLYTA and none of the patients receiving sorafenib. In clinical trials with INLYTA, gastrointestinal perforation was reported in 5/715 patients (1%), including one death. In addition to cases of gastrointestinal perforation, fistulas were reported in 4/715 patients (1%).

Monitor for symptoms of gastrointestinal perforation or fistula periodically throughout treatment with INLYTA.

5.7 Thyroid Dysfunction

In a controlled clinical study with INLYTA for the treatment of patients with RCC, hypothyroidism was reported in 69/359 patients (19%) receiving INLYTA and 29/355 patients (8%) receiving sorafenib. Hyperthyroidism was reported in 4/359 patients (1%) receiving INLYTA and 4/355 patients (1%) receiving sorafenib. In patients who had thyroid stimulating hormone (TSH) <5 µU/mL before treatment, elevations of TSH to ≥10 µU/mL occurred in 79/245

patients (32%) receiving INLYTA and 25/232 patients (11%) receiving sorafenib [see Adverse Reactions (6.1)].

Monitor thyroid function before initiation of, and periodically throughout, treatment with INLYTA. Treat hypothyroidism and hyperthyroidism according to standard medical practice to maintain euthyroid state.

5.8 Risk of Impaired Wound Healing

Impaired wound healing can occur in patients who receive drugs that inhibit the vascular endothelial growth factor (VEGF) signaling pathway. Therefore, INLYTA has the potential to adversely affect wound healing.

Withhold INLYTA for at least 2 days prior to elective surgery. Do not administer for at least 2 weeks following major surgery and until adequate wound healing. The safety of resumption of INLYTA after resolution of wound healing complications has not been established.

5.9 Reversible Posterior Leukoencephalopathy Syndrome

In a controlled clinical study with INLYTA for the treatment of patients with RCC, reversible posterior leukoencephalopathy syndrome (RPLS) was reported in 1/359 patients (<1%) receiving INLYTA and none of the patients receiving sorafenib [see Adverse Reactions (6.1)]. There were two additional reports of RPLS in other clinical trials with INLYTA.

RPLS is a neurological disorder which can present with headache, seizure, lethargy, confusion, blindness and other visual and neurologic disturbances. Mild to severe hypertension may be present. Magnetic resonance imaging is necessary to confirm the diagnosis of RPLS. Discontinue INLYTA in patients developing RPLS. The safety of reinitiating INLYTA therapy in patients previously experiencing RPLS is not known.

5.10 Proteinuria

In a controlled clinical study with INLYTA for the treatment of patients with RCC, proteinuria was reported in 39/359 patients (11%) receiving INLYTA and 26/355 patients (7%) receiving sorafenib. Grade 3 proteinuria was reported in 11/359 patients (3%) receiving INLYTA and 6/355 patients (2%) receiving sorafenib [see Adverse Reactions (6.1)].

Monitoring for proteinuria before initiation of, and periodically throughout, treatment with INLYTA is recommended. For patients who develop moderate to severe proteinuria, reduce the dose or temporarily interrupt INLYTA treatment. INLYTA should be discontinued if the patient develops nephrotic syndrome.

5.11 Hepatotoxicity

In a controlled clinical study with INLYTA for the treatment of patients with RCC, alanine aminotransferase (ALT) elevations of all grades occurred in 22% of patients on both arms, with

Grade 3/4 events in <1% of patients on the INLYTA arm. ALT, aspartate aminotransferase (AST) and bilirubin before initiation of and periodically throughout treatment with INLYTA.

5.12 Use in Patients with Hepatic Impairment

The systemic exposure to axitinib was higher in subjects with moderate hepatic impairment (Child-Pugh class B) compared to subjects with normal hepatic function. A dose decrease is recommended when administering INLYTA to patients with moderate hepatic impairment (Child-Pugh class B). INLYTA has not been studied in patients with severe hepatic impairment (Child-Pugh class C) [see *Dosage and Administration (2.2)*, *Use in Specific Populations (8.6)*, and *Clinical Pharmacology (12.3)*].

5.13 Embryo-Fetal Toxicity

Based on its mechanism of action and findings from animal studies, INLYTA can cause fetal harm when administered to a pregnant woman. There are no available human data to inform the drug-associated risk. In developmental toxicity studies in mice, axitinib was teratogenic, embryotoxic and fetotoxic at maternal exposures that were lower than human exposures at the recommended clinical dose. Advise females of reproductive potential of the potential risk to the fetus and to use effective contraception during treatment with INLYTA and for 1 week after the last dose. Advise males with female partners of reproductive potential to use effective contraception during treatment with INLYTA and for 1 week after the last dose [see *Use in Specific Populations (8.1, 8.3)*, *Clinical Pharmacology (12.1)*].

5.14 Lactose

This medicinal product contains lactose. Patients with rare hereditary problems of galactose intolerance, total lactase deficiency or glucose-galactose malabsorption should not take this medicine.

5.15 Sodium

This medicinal product contains less than 1 mmol (23 mg) sodium per film-coated tablet, that is to say essentially 'sodium-free'.

5.16 Aneurysms and artery dissections

The use of vascular endothelial growth factor (VEGF) pathway inhibitors in patients with or without hypertension may promote the formation of aneurysms and/or artery dissections. Before initiating INLYTA, this risk should be carefully considered in patients with risk factors such as hypertension or history of aneurysm.

6 ADVERSE REACTIONS

The following clinically significant adverse reactions are discussed elsewhere in the labeling [see *Warnings and Precautions (5)*]:

- Hypertension and hypertensive crisis [see Warnings and Precautions (5.1)]
- Arterial thromboembolic events [see Warnings and Precautions (5.2)]
- Venous thromboembolic events [see Warnings and Precautions (5.3)]
- Hemorrhage [see Warnings and Precautions (5.4)]
- Cardiac failure [see Warnings and Precautions (5.5)]
- Gastrointestinal perforation and fistula formation [see Warnings and Precautions (5.6)]
- Thyroid dysfunction [see Warnings and Precautions (5.7)]
- Reversible posterior leukoencephalopathy syndrome [see Warnings and Precautions (5.9)]
- Proteinuria [see Warnings and Precautions (5.10)]
- Hepatotoxicity [see Warnings and Precautions (5.11)]
- Hepatic impairment [see Warnings and Precautions (5.12)]

6.1 Clinical Trials Experience

Because clinical trials are conducted under widely varying conditions, adverse reaction rates observed in the clinical trials of a drug cannot be directly compared to rates in the clinical trials of another drug and may not reflect the rates observed in clinical practice.

The safety of INLYTA has been evaluated in 715 patients in monotherapy studies, which included 537 patients with advanced RCC. The data described [see Adverse Reactions (6.1)] reflect exposure to INLYTA in 359 patients with advanced RCC who participated in a randomized clinical study versus sorafenib [see Clinical Studies (14)].

The median duration of treatment was 6.4 months (range 0.03 to 22.0) for patients who received INLYTA and 5.0 months (range 0.03 to 20.1) for patients who received sorafenib. Dose modifications or temporary delay of treatment due to an adverse reaction occurred in 199/359 patients (55%) receiving INLYTA and 220/355 patients (62%) receiving sorafenib. Permanent discontinuation due to an adverse reaction occurred in 34/359 patients (9%) receiving INLYTA and 46/355 patients (13%) receiving sorafenib.

The most common ($\geq 20\%$) adverse reactions observed following treatment with INLYTA were diarrhea, hypertension, fatigue, decreased appetite, nausea, dysphonia, palmar-plantar erythrodysesthesia (hand-foot) syndrome, weight decreased, vomiting, asthenia, and constipation. Table 1 presents adverse reactions reported in $\geq 10\%$ patients who received INLYTA or sorafenib.

Table 1. Adverse Reactions Occurring in $\geq 10\%$ of Patients Who Received INLYTA or Sorafenib

Adverse Reaction ^a	INLYTA		Sorafenib	
	(N=359)		(N=355)	
	All Grades ^b	Grade 3/4	All Grades ^b	Grade 3/4
	%	%	%	%
Diarrhea	55	11	53	7
Hypertension	40	16	29	11
Fatigue	39	11	32	5
Decreased appetite	34	5	29	4
Nausea	32	3	22	1

Adverse Reaction ^a	INLYTA		Sorafenib	
	(N=359)		(N=355)	
	All Grades ^b	Grade 3/4	All Grades ^b	Grade 3/4
	%	%	%	%
Dysphonia	31	0	14	0
Palmar-plantar erythrodysesthesia syndrome	27	5	51	16
Weight decreased	25	2	21	1
Vomiting	24	3	17	1
Asthenia	21	5	14	3
Constipation	20	1	20	1
Hypothyroidism	19	<1	8	0
Cough	15	1	17	1
Mucosal inflammation	15	1	12	1
Arthralgia	15	2	11	1
Stomatitis	15	1	12	<1
Dyspnea	15	3	12	3
Abdominal pain	14	2	11	1
Headache	14	1	11	0
Pain in extremity	13	1	14	1
Rash	13	<1	32	4
Proteinuria	11	3	7	2
Dysgeusia	11	0	8	0
Dry skin	10	0	11	0
Dyspepsia	10	0	2	0
Pruritus	7	0	12	0
Alopecia	4	0	32	0
Erythema	2	0	10	<1

^a Percentages are treatment-emergent, all-causality events

^b National Cancer Institute Common Terminology Criteria for Adverse Events, Version 3.0

Selected adverse reactions (all grades) that were reported in <10% of patients treated with INLYTA included dizziness (9%), upper abdominal pain (8%), myalgia (7%), dehydration (6%), epistaxis (6%), anemia (4%), hemorrhoids (4%), hematuria (3%), tinnitus (3%), lipase increased (3%), glossodynia (3%), pulmonary embolism (2%), rectal hemorrhage (2%), hemoptysis (2%), deep vein thrombosis (1%), retinal-vein occlusion/thrombosis (1%), polycythemia (1%), and transient ischemic attack (1%).

Table 2 presents the most common laboratory abnormalities reported in ≥10% patients who received INLYTA or sorafenib.

Table 2. Laboratory Abnormalities Occurring in ≥10% of Patients Who Received INLYTA or Sorafenib

Laboratory Abnormality	N	INLYTA		N	Sorafenib	
		All Grades ^a	Grade 3/4		All Grades ^a	Grade 3/4
		%	%		%	%
Hematology						
Hemoglobin decreased	320	35	<1	316	52	4
Lymphocytes (absolute) decreased	317	33	3	309	36	4
Platelets decreased	312	15	<1	310	14	0
White blood cells decreased	320	11	0	315	16	<1
Chemistry						
Creatinine increased	336	55	0	318	41	<1
Bicarbonate decreased	314	44	<1	291	43	0
Hypocalcemia	336	39	1	319	59	2
ALP increased	336	30	1	319	34	1
Hyperglycemia	336	28	2	319	23	2
Lipase increased	338	27	5	319	46	15
Amylase increased	338	25	2	319	33	2
ALT increased	331	22	<1	313	22	2
AST increased	331	20	<1	311	25	1
Hypernatremia	338	17	1	319	13	1
Hypoalbuminemia	337	15	<1	319	18	1
Hyperkalemia	333	15	3	314	10	3
Hypoglycemia	336	11	<1	319	8	<1
Hyponatremia	338	13	4	319	11	2
Hypophosphatemia	336	13	2	318	49	16

^a National Cancer Institute Common Terminology Criteria for Adverse Events, Version 3.0

ALP: alkaline phosphatase; ALT: alanine aminotransferase; AST: aspartate aminotransferase

Selected laboratory abnormalities (all grades) that were reported in <10% of patients treated with INLYTA included hemoglobin increased (above the upper limit of normal) (9% for INLYTA versus 1% for sorafenib) and hypercalcemia (6% for INLYTA versus 2% for sorafenib).

6.2 Postmarketing Experience

The following adverse reactions have been identified during postapproval use of INLYTA. Because these reactions are reported voluntarily from a population of uncertain size, it is not always possible to reliably estimate their frequency or establish a causal relationship to drug exposure.

Vascular disorders: arterial (including aortic), aneurysms, dissections, and rupture.

Reporting of suspected adverse reactions

Reporting suspected adverse reactions after authorisation of the medicinal product is important. It allows continued monitoring of the benefit/risk balance of the medicinal product.

Any suspected adverse events should be reported to the Ministry of Health according to the National Regulation by using an online form <https://sideeffects.health.gov.il>

7 DRUG INTERACTIONS

7.1 CYP3A4/5 Inhibitors

Co-administration of ketoconazole, a strong inhibitor of CYP3A4/5, increased the plasma exposure of axitinib in healthy volunteers. Co-administration of INLYTA with strong CYP3A4/5 inhibitors should be avoided. Grapefruit or grapefruit juice may also increase axitinib plasma concentrations and should be avoided. Selection of concomitant medication with no or minimal CYP3A4/5 inhibition potential is recommended. If a strong CYP3A4/5 inhibitor must be co-administered, the INLYTA dose should be reduced [*see Dosage and Administration (2.2) and Clinical Pharmacology (12.3)*].

7.2 CYP3A4/5 Inducers

Co-administration of rifampin, a strong inducer of CYP3A4/5, reduced the plasma exposure of axitinib in healthy volunteers. Co-administration of INLYTA with strong CYP3A4/5 inducers (e.g., rifampin, dexamethasone, phenytoin, carbamazepine, rifabutin, rifapentine, phenobarbital, and St. John's wort) should be avoided. Selection of concomitant medication with no or minimal CYP3A4/5 induction potential is recommended [*see Dosage and Administration (2.2), Clinical Pharmacology (12.3)*]. Moderate CYP3A4/5 inducers (e.g., bosentan, efavirenz, etravirine, modafinil, and nafcillin) may also reduce the plasma exposure of axitinib and should be avoided if possible.

8 USE IN SPECIFIC POPULATIONS

8.1 Pregnancy

Risk Summary

Based on findings in animal studies and its mechanism of action, INLYTA can cause fetal harm when administered to a pregnant woman. There are no available human data to inform the drug-associated risk. In developmental toxicity studies, axitinib was teratogenic, embryotoxic and fetotoxic in mice at exposures lower than human exposures at the recommended starting dose (*see Data*). Advise females of reproductive potential of the potential risk to a fetus.

The background risk of major birth defects and miscarriage for the indicated populations are unknown. However, the background risk in the United States (U.S.) general population of major birth defects is 2%-4% and of miscarriage is 15%-20% of clinically recognized pregnancies.

Data

Animal Data

Oral axitinib administered twice daily to female mice prior to mating and through the first week of pregnancy caused an increase in post-implantation loss at all doses tested (≥ 15 mg/kg/dose, approximately 10 times the systemic exposure (AUC) in patients at the recommended starting dose). In an embryo-fetal developmental toxicity study, pregnant mice received oral doses of 0.15, 0.5 and 1.5 mg/kg/dose axitinib twice daily during the period of organogenesis. Embryo-fetal toxicities observed in the absence of maternal toxicity included malformation (cleft palate) at 1.5 mg/kg/dose (approximately 0.5 times the AUC in patients at the recommended starting dose) and variation in skeletal ossification at ≥ 0.5 mg/kg/dose (approximately 0.15 times the AUC in patients at the recommended starting dose).

8.2 Lactation

Risk Summary

There are no data on the presence of axitinib in human milk, or its effects on the breastfed child or on milk production. Because of the potential for serious adverse reactions in a breastfed child from INLYTA, advise lactating women not to breastfeed during treatment and for 2 weeks after the final dose.

8.3 Females and Males of Reproductive Potential

Based on findings in animal studies, INLYTA can cause fetal harm when administered to a pregnant woman [*see Use in Specific Populations (8.1)*]. .

Pregnancy Testing

Verify pregnancy status in females of reproductive potential prior to initiating treatment with INLYTA.

Contraception

Females

Advise females of reproductive potential to use effective contraception during treatment with INLYTA and for 1 week after the last dose.

Males

Based on findings in animal studies, advise males with female partners of reproductive potential to use effective contraception during treatment and for 1 week after the last dose.

Infertility

Females and Males

Based on findings in animals, INLYTA may impair fertility in females and males of reproductive potential [see *Nonclinical Toxicology (13.1)*].

8.4 Pediatric Use

The safety and effectiveness of INLYTA in pediatric patients have not been established.

The safety and effectiveness of INLYTA were assessed, but not established, in two open label studies: a dose finding study of INLYTA as a single agent in 17 pediatric patients aged 5 to <17 years with recurrent or refractory solid tumors (ADVL1315, NCT02164838) and a randomized study of INLYTA as a single agent or in combination in 7 pediatric patients aged 7 to <17 years (AREN1721, NCT03595124).

No new safety signals were observed with INLYTA in pediatric patients across these studies.

Exposure in pediatric patients who received INLYTA at the maximum tolerated dosage were lower than those previously observed in adults who received the approved recommended starting dosage.

Juvenile Animal Toxicity Data

Toxicities in bone and teeth were observed in immature mice and dogs administered oral axitinib twice daily for 1 month or longer. Effects in bone consisted of thickened growth plates in mice and dogs at ≥ 15 mg/kg/dose (approximately 6 and 15 times, respectively, the systemic exposure (AUC) in patients at the recommended starting dose). Abnormalities in growing incisor teeth (including dental caries, malocclusions and broken and/or missing teeth) were observed in mice administered oral axitinib twice daily at ≥ 5 mg/kg/dose (approximately 1.5 times the AUC in patients at the recommended starting dose). Other toxicities of potential concern to pediatric patients have not been evaluated in juvenile animals.

8.5 Geriatric Use

In a controlled clinical study with INLYTA for the treatment of patients with RCC, 123/359 patients (34%) treated with INLYTA were ≥ 65 years of age. Although greater sensitivity in some older individuals cannot be ruled out, no overall differences were observed in the safety and effectiveness of INLYTA between patients who were ≥ 65 years of age and younger.

No dosage adjustment is required in elderly patients [see *Dosage and Administration (2.2)*, *Clinical Pharmacology (12.3)*].

8.6 Hepatic Impairment

In a dedicated hepatic impairment trial, compared to subjects with normal hepatic function, systemic exposure following a single dose of INLYTA was similar in subjects with baseline mild hepatic impairment (Child-Pugh class A) and higher in subjects with baseline moderate hepatic impairment (Child-Pugh class B).

No starting dose adjustment is required when administering INLYTA to patients with mild hepatic impairment (Child-Pugh class A). A starting dose decrease is recommended when administering INLYTA to patients with moderate hepatic impairment (Child-Pugh class B) [see *Dosage and Administration (2.2)*, *Warnings and Precautions (5.12)*, *Clinical Pharmacology (12.3)*].

INLYTA has not been studied in subjects with severe hepatic impairment (Child-Pugh class C).

8.7 Renal Impairment

No dedicated renal impairment trial for axitinib has been conducted. Based on the population pharmacokinetic analyses, no significant difference in axitinib clearance was observed in patients with pre-existing mild to severe renal impairment (15 mL/min \leq creatinine clearance [CLcr] < 89 mL/min) [see *Clinical Pharmacology (12.3)*]. No starting dose adjustment is needed for patients with pre-existing mild to severe renal impairment. Caution should be used in patients with end-stage renal disease (CLcr < 15 mL/min).

10 OVERDOSAGE

There is no specific treatment for INLYTA overdose.

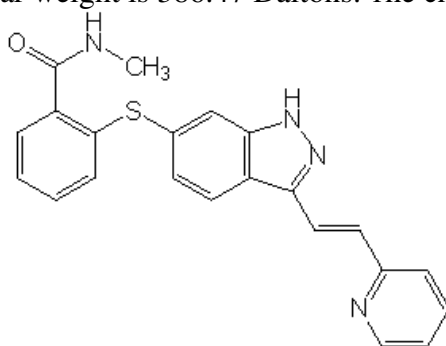
In a controlled clinical study with INLYTA for the treatment of patients with RCC, 1 patient inadvertently received a dose of 20 mg twice daily for 4 days and experienced dizziness (Grade 1).

In a clinical dose finding study with INLYTA, subjects who received starting doses of 10 mg twice daily or 20 mg twice daily experienced adverse reactions which included hypertension, seizures associated with hypertension, and fatal hemoptysis.

In cases of suspected overdose, INLYTA should be withheld and supportive care instituted.

11 DESCRIPTION

INLYTA (axitinib) is a kinase inhibitor. Axitinib has the chemical name N-methyl-2-[3-((E)-2-pyridin-2-yl-vinyl)-1H-indazol-6-ylsulfanyl]-benzamide. The molecular formula is C₂₂H₁₈N₄O_S and the molecular weight is 386.47 Daltons. The chemical structure is:



Axitinib is a white to light-yellow powder with a pKa of 4.8. The solubility of axitinib in aqueous media over the range pH 1.1 to pH 7.8 is in excess of 0.2 µg/mL. The partition coefficient (n-octanol/water) is 3.5.

INLYTA is supplied as red, film-coated tablets containing either 1 mg or 5 mg of axitinib together with microcrystalline cellulose, lactose monohydrate, croscarmellose sodium, magnesium stearate, and Opadry® II red 32K15441 as inactive ingredients. The Opadry II red 32K15441 film coating contains lactose monohydrate, HPMC 2910/Hypromellose 15cP, titanium dioxide, triacetin (glycerol triacetate), and red iron oxide.

12 CLINICAL PHARMACOLOGY

12.1 Mechanism of Action

Axitinib has been shown to inhibit receptor tyrosine kinases including vascular endothelial growth factor receptors (VEGFR)-1, VEGFR-2, and VEGFR-3 at therapeutic plasma concentrations. These receptors are implicated in pathologic angiogenesis, tumor growth, and cancer progression. VEGF-mediated endothelial cell proliferation and survival were inhibited by axitinib in vitro and in mouse models. Axitinib was shown to inhibit tumor growth and phosphorylation of VEGFR-2 in tumor xenograft mouse models.

12.2 Pharmacodynamics

The effect of a single oral dose of INLYTA (5 mg) in the absence and presence of 400 mg ketoconazole on the QTc interval was evaluated in a randomized, single-blinded, two-way crossover study in 35 healthy subjects. No large changes in mean QTc interval (i.e., >20 ms) from placebo were detected up to 3 hours post-dose. However, small increases in mean QTc interval (i.e., <10 ms) cannot be ruled out.

12.3 Pharmacokinetics

The population pharmacokinetic analysis pooled data from 17 trials in healthy subjects and patients with cancer. A two-compartment disposition model with first-order absorption and lag-time adequately describes the axitinib concentration-time profile.

Absorption and Distribution

Following single oral 5-mg dose administration, the median T_{max} ranged from 2.5 to 4.1 hours. Based on the plasma half-life, steady state is expected within 2 to 3 days of dosing. Dosing of axitinib at 5 mg twice daily resulted in approximately 1.4-fold accumulation compared to administration of a single dose. At steady state, axitinib exhibits approximately linear pharmacokinetics within the 1-mg to 20-mg dose range. The mean absolute bioavailability of axitinib after an oral 5 mg dose is 58%.

Compared to overnight fasting, administration of INLYTA with a moderate fat meal resulted in 10% lower AUC and a high fat, high-calorie meal resulted in 19% higher AUC. INLYTA can be administered with or without food [*see Dosage and Administration (2.1)*].

Axitinib is highly bound (>99%) to human plasma proteins with preferential binding to albumin and moderate binding to α 1-acid glycoprotein. In patients with advanced RCC (n=20), at the 5 mg twice daily dose in the fed state, the geometric mean (CV%) C_{max} and AUC_{0-24} were 27.8 (79%) ng/mL and 265 (77%) ng.h/mL, respectively. The geometric mean (CV%) clearance and apparent volume of distribution were 38 (80%) L/h and 160 (105%) L, respectively.

Metabolism and Elimination

The plasma half-life of INLYTA ranges from 2.5 to 6.1 hours. Axitinib is metabolized primarily in the liver by CYP3A4/5 and to a lesser extent by CYP1A2, CYP2C19, and UGT1A1. Following oral administration of a 5-mg radioactive dose of axitinib, approximately 41% of the radioactivity was recovered in feces and approximately 23% was recovered in urine. Unchanged axitinib, accounting for 12% of the dose, was the major component identified in feces. Unchanged axitinib was not detected in urine; the carboxylic acid and sulfoxide metabolites accounted for the majority of radioactivity in urine. In plasma, the N-glucuronide metabolite represented the predominant radioactive component (50% of circulating radioactivity) and unchanged axitinib and the sulfoxide metabolite each accounted for approximately 20% of the circulating radioactivity.

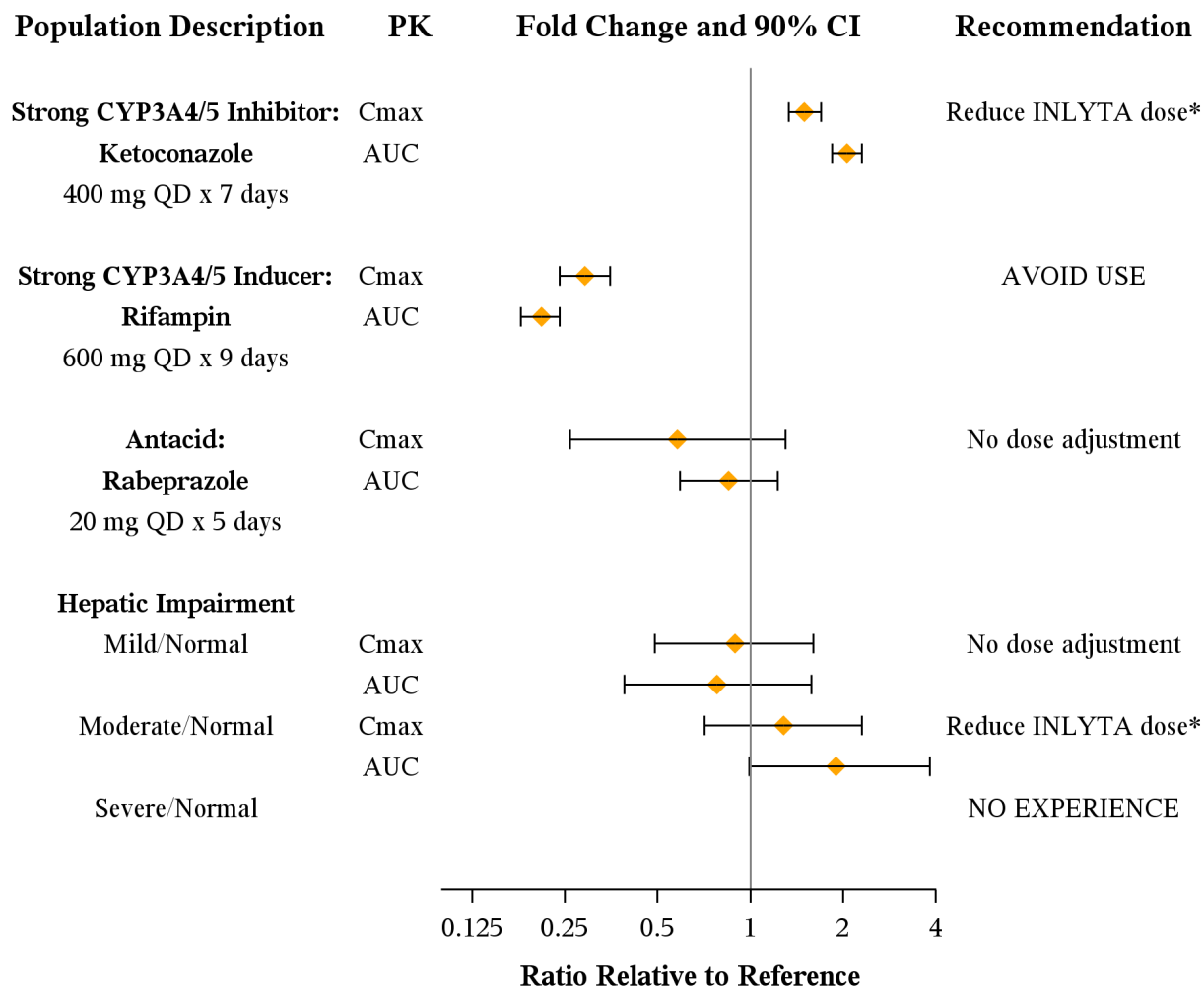
The sulfoxide and N-glucuronide metabolites show approximately ≥ 400 -fold less in vitro potency against VEGFR-2 compared to axitinib.

Drug-Drug Interactions

Effects of Other Drugs on INLYTA

Axitinib is metabolized primarily in the liver by CYP3A4/5. Additionally, the aqueous solubility of axitinib is pH dependent, with higher pH resulting in lower solubility. The effects of a strong CYP3A4/5 inhibitor, a strong CYP3A4/5 inducer, and an antacid on the pharmacokinetics of axitinib are presented in Figure 1 [see *Dosage and Administration (2.2) and Drug Interactions (7.1, 7.2)*].

Figure 1. Impact of Co-administered Drugs and Hepatic Impairment on Axitinib Pharmacokinetics



AUC: area under the curve; Cmax: maximum concentration. *See Dosage and Administration (2).

Effects of INLYTA on Other Drugs

In vitro studies demonstrated that axitinib has the potential to inhibit CYP1A2 and CYP2C8. However, co-administration of axitinib with paclitaxel, a CYP2C8 substrate, did not increase plasma concentrations of paclitaxel in patients.

In vitro studies indicated that axitinib does not inhibit CYP2A6, CYP2C9, CYP2C19, CYP2D6, CYP2E1, CYP3A4/5, or UGT1A1 at therapeutic plasma concentrations. In vitro studies in human hepatocytes indicated that axitinib does not induce CYP1A1, CYP1A2, or CYP3A4/5.

Axitinib is an inhibitor of the efflux transporter P-glycoprotein (P-gp) in vitro. However, INLYTA is not expected to inhibit P-gp at therapeutic plasma concentrations.

Specific Populations

Patients with Hepatic Impairment

The effects of hepatic impairment on the pharmacokinetics of axitinib are presented in Figure 1 [see *Dosage and Administration (2.2)*, *Warnings and Precautions (5.12)*, *Use in Specific Populations (8.6)*].

Patients with Renal Impairment

Population pharmacokinetic analysis (based on pre-existing renal function) was carried out in 590 healthy volunteers and patients, including five with severe renal impairment ($15 \text{ mL/min} \leq \text{CLcr} < 29 \text{ mL/min}$), 64 with moderate renal impairment ($30 \text{ mL/min} \leq \text{CLcr} < 59 \text{ mL/min}$), and 139 with mild renal impairment ($60 \text{ mL/min} \leq \text{CLcr} < 89 \text{ mL/min}$). Mild to severe renal impairment did not have meaningful effects on the pharmacokinetics of axitinib. Data from only one patient with end-stage renal disease are available [see *Use in Specific Populations (8.7)*].

Other Intrinsic Factors

Population pharmacokinetic analyses indicate that there are no clinically relevant effects of age, gender, race, body weight, body surface area, UGT1A1 genotype, or CYP2C19 genotype on the clearance of axitinib.

13 NONCLINICAL TOXICOLOGY

13.1 Carcinogenesis, Mutagenesis, Impairment of Fertility

Carcinogenicity studies have not been conducted with axitinib.

Axitinib was not mutagenic in an in vitro bacterial reverse mutation (Ames) assay and was not clastogenic in the in vitro human lymphocyte chromosome aberration assay. Axitinib was genotoxic in the in vivo mouse bone marrow micronucleus assay.

INLYTA has the potential to impair reproductive function and fertility in humans. In repeat-dose toxicology studies, findings in the male reproductive tract were observed in the testes/epididymis (decreased organ weight, atrophy or degeneration, decreased numbers of germinal cells, hypospermia or abnormal sperm forms, reduced sperm density and count) at $\geq 15 \text{ mg/kg/dose}$ administered orally twice daily in mice (approximately 7 times the systemic exposure (AUC) in patients at the recommended starting dose) and $\geq 1.5 \text{ mg/kg/dose}$ administered orally twice daily in dogs (approximately 0.1 times the AUC in patients at the recommended starting dose). Findings in the female reproductive tract in mice and dogs included signs of delayed sexual maturity, reduced or absent corpora lutea, decreased uterine weights and uterine atrophy at $\geq 5 \text{ mg/kg/dose}$ (approximately 1.5 or 0.3 times the AUC in patients at the recommended starting dose compared to mice and dogs, respectively).

In a fertility study in mice, axitinib did not affect mating or fertility rate when administered orally twice daily to males at any dose tested up to 50 mg/kg/dose following at least 70 days of administration (approximately 57 times the AUC in patients at the recommended starting dose). In female mice, reduced fertility and embryonic viability were observed at all doses tested (≥ 15 mg/kg/dose administered orally twice daily) following at least 15 days of treatment with axitinib (approximately 10 times the AUC in patients at the recommended starting dose).

14 CLINICAL STUDIES

The safety and efficacy of INLYTA were evaluated in a randomized, open-label, multicenter Phase 3 study. Patients (N=723) with advanced RCC whose disease had progressed on or after treatment with 1 prior systemic therapy, including sunitinib-, bevacizumab-, temsirolimus-, or cytokine-containing regimens were randomized (1:1) to receive INLYTA (N=361) or sorafenib (N=362). Progression-free survival (PFS) was assessed by a blinded independent central review committee. Other endpoints included objective response rate (ORR) and overall survival (OS).

Of the patients enrolled in this study, 389 patients (54%) had received 1 prior sunitinib-based therapy, 251 patients (35%) had received 1 prior cytokine-based therapy (interleukin-2 or interferon-alfa), 59 patients (8%) had received 1 prior bevacizumab-based therapy, and 24 patients (3%) had received 1 prior temsirolimus-based therapy. The baseline demographic and disease characteristics were similar between the INLYTA and sorafenib groups with regard to age (median 61 years), gender (72% male), race (75% white, 21% Asian), Eastern Cooperative Oncology Group (ECOG) performance status (55% 0, 45% 1), and histology (99% clear cell).

There was a statistically significant advantage for INLYTA over sorafenib for the endpoint of PFS (see Table 3 and Figure 2). There was no statistically significant difference between the arms in OS.

Table 3. Efficacy Results

Endpoint/Study Population	INLYTA	Sorafenib	HR (95% CI)	P-value
Overall ITT	N= 361	N = 362		
Median PFS ^{a,b} in months (95% CI)	6.7 (6.3, 8.6)	4.7 (4.6, 5.6)	0.67 (0.54, 0.81)	<0.0001 ^c
Median OS in months (95% CI)	20.1 (16.7, 23.4)	19.2 (17.5, 22.3)	0.97 (0.80, 1.17)	NS
ORR % (95% CI)	19.4 (15.4, 23.9)	9.4 (6.6, 12.9)	2.06 ^d (1.41, 3.00)	- ^e
PFS by prior treatment				
Sunitinib-refractory subgroup	N=194	N=195		
Median, months (95% CI)	4.8 (4.5, 6.4)	3.4 (2.8, 4.7)	0.74 (0.57, 0.96)	- ^e
Cytokine-refractory subgroup	N=126	N=125		
Median, months (95% CI)	12.1 (10.1, 13.9)	6.5 (6.3, 8.3)	0.46 (0.32, 0.68)	- ^e

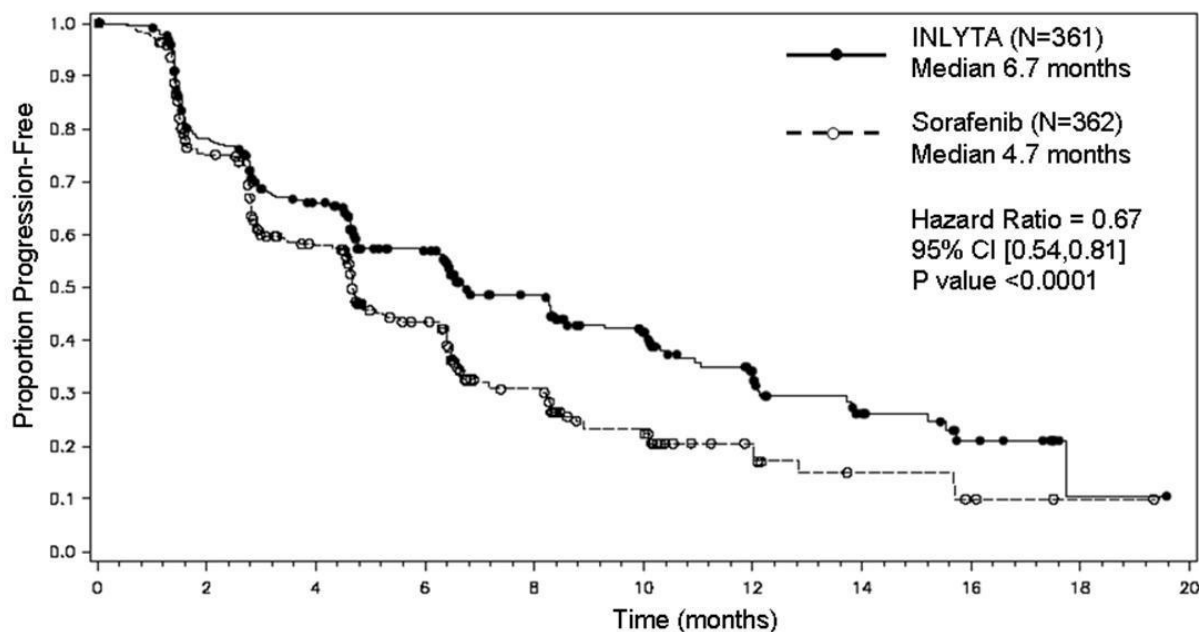
CI: Confidence interval; HR: Hazard ratio (INLYTA/sorafenib); ITT: Intent-to-treat; ORR: Objective response rate; NS: Not significant; OS: Overall survival; PFS: Progression-free survival

^a Time from randomization to progression or death due to any cause, whichever occurs first.

Endpoint/Study Population	INLYTA	Sorafenib	HR (95% CI)	P-value
---------------------------	--------	-----------	-------------	---------

- ^b Assessed by independent radiology review according to RECIST.
- ^c One-sided p-value from a log-rank test of treatment stratified by ECOG performance status and prior therapy (comparison is considered statistically significant if the one-sided p-value is <0.023).
- ^d Risk ratio is used for ORR. A risk ratio >1 indicated a higher likelihood of responding in the axitinib arm; a risk ratio <1 indicated a higher likelihood of responding in the sorafenib arm.
- ^e P-value not included since it was not adjusted for multiple testing.

Figure 2. Kaplan-Meier Curve for Progression Free Survival by Independent Assessment (Intent-to-Treat Population)



16 HOW SUPPLIED/STORAGE AND HANDLING

INLYTA tablets are supplied as follows:

1 mg tablets are red film-coated, oval tablets debossed with “Pfizer” on one side and “1 XNB” on the other; available in bottles of 60 or 180 tablets and blister of 28 or 56 tablets.

5 mg tablets are red film-coated, triangular tablets debossed with “Pfizer” on one side and “5 XNB” on the other; available in bottles of 60 tablets and blister of 28 or 56 tablets.

Not all pack sizes and types may be marketed.

Storage conditions

Store below 30°C.

Shelf life:

The expiry date of the product is indicated on the packaging materials.

Shelf life after first opening the bottle: 6 months.

Inlyta 1 mg and 5 mg, Israel, LPD, CC 250724

License Holder: Pfizer Pharmaceuticals Israel Ltd., 9 Shenkar st., Herzliya 46725.

License Number:

Inlyta 1 mg: 149-67-33736

Inlyta 5 mg: 149-68-33737

Revised in 07/2024.