



**VITRELLE<sup>®</sup> 250 micrograms**

SOLUTION FOR INJECTION IN PRE-FILLED PEN

Instructions for use

הוראות שימוש

تعليمات الإستعمال

**אוביטרל<sup>®</sup> 250 מיקרוגרם**

תמיסה להזרקה בעט מוכן לשימוש

**أوقيتريل<sup>®</sup> ٢٥٠ ميكروغرام**

محلول للحقن ضمن قلم جاهز للإستعمال



**MERCK**

## Instructions for use

1. How to use the Ovitrelle pre-filled pen
2. Before starting to use the Ovitrelle pre-filled pen
3. Preparing the Ovitrelle pen for injection
4. Setting the dose to 250
5. Injecting the dose
6. After the injection



### Attention:

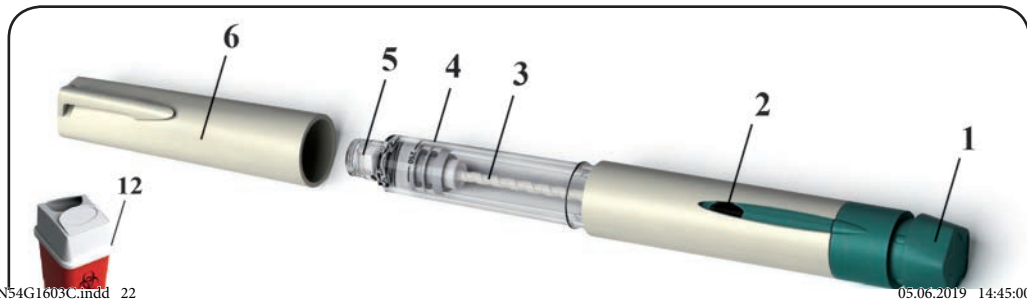
Please read these instructions for use before using the Ovitrelle pre-filled pen. Follow the instructions exactly, as they may differ from your past experience.

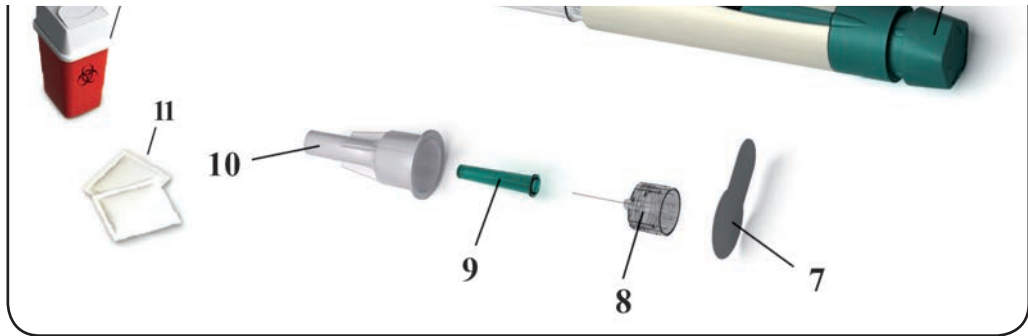
## 1. How to use the Ovitrelle pre-filled pen

- The pen is intended for subcutaneous injection only.
- Inject Ovitrelle as your doctor or nurse has instructed you.
- **This pen is for single use only.** Do not share the pen with others.

## 2. Before starting to use the Ovitrelle pre-filled pen

- Wash your hands with soap and water.
- Find a clean **and flat** surface.
- Check the **expiration date** on the pen label.
- Gather everything you need and lay it out in front of you:





- |                          |                              |                               |
|--------------------------|------------------------------|-------------------------------|
| 1. dose-setting knob     | 5. threaded needle connector | 9. inner needle shield        |
| 2. dose display window   | 6. pen cap                   | 10. outer needle cap          |
| 3. plunger piston        | 7. peel-off seal tab         | 11. alcohol swab              |
| 4. drug reservoir holder | 8. removable needle          | 12. sharps disposal container |

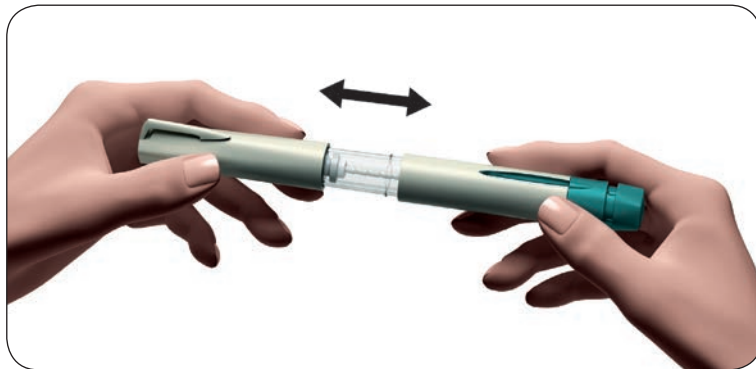
Note: alcohol swabs and sharps disposal container are not provided in the pack.

English

- 23 -

### 3. Preparing the Ovitrelle pen for injection

#### 3.1 Take off the pen cap



### 3.2 Prepare your needle for injection

- Take a new needle – only use the "single-use" needles supplied.
- Hold the outer needle cap firmly.
- Check that the peel-off seal tab on the outer needle cap is not damaged or loose.
- Remove the peel-off seal tab.



#### CAUTION:

*If the peel-off seal tab is damaged or loose, do not use the needle. Throw it away in a sharps disposal container. Ask the doctor or pharmacist how to obtain a new needle.*

English

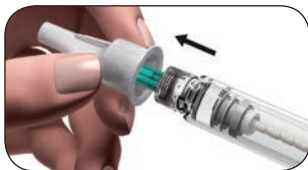
- 25 -

### 3.3 Attach the needle

- Screw the threaded needle connector of the Ovitrelle pen into the outer needle cap until you feel light resistance.



**Warning:** Do not attach the needle too tightly; it may make it difficult to take it off after the injection.



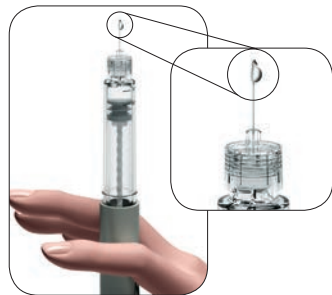
- Remove the outer needle cap by pulling it gently.  
**Put it aside for later use.**
- Hold the Ovitrelle pre-filled pen with the needle pointing upward.
- Carefully remove the green inner needle shield.





### 3.4 Look closely at the tip of the needle for a tiny drop of fluid

- If you see a tiny drop of fluid, proceed to **Section 4: Setting the dose to 250.**



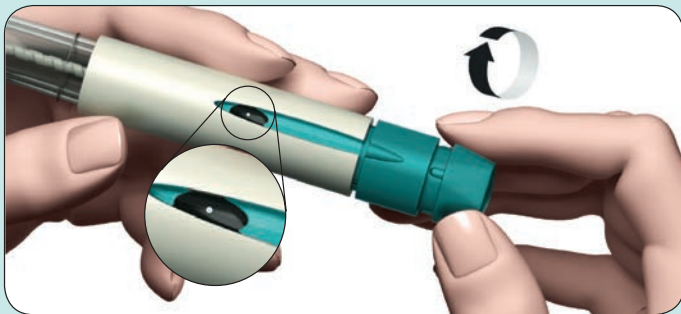
#### CAUTION:

*If you do not see a tiny drop at or near the needle tip, you must perform the following steps.*

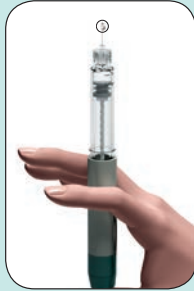
English

- 27 -

If you do not see a tiny drop at or near the needle tip:



1. Gently turn the dose-setting knob clockwise until you see a dot (•) in the dose display window. If you pass the dot, simply turn the dose-setting knob back to the dot (•).



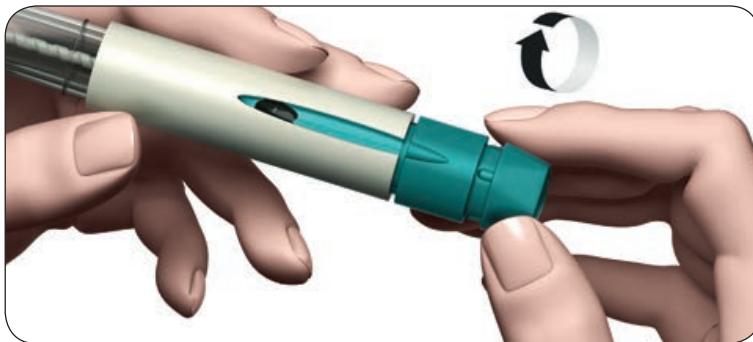
2. Hold the pen with the needle pointing upward.
3. Tap the drug reservoir holder gently.
4. Press the dose-setting knob as far as it will go. A tiny drop of liquid will appear at the top of the needle; this shows that the pen is ready for use.
5. If you do not see any liquid, try again (this can be done a maximum of two times), starting from step 1 of section "If you do not see a tiny drop at or near the needle tip" above.

English

- 29 -

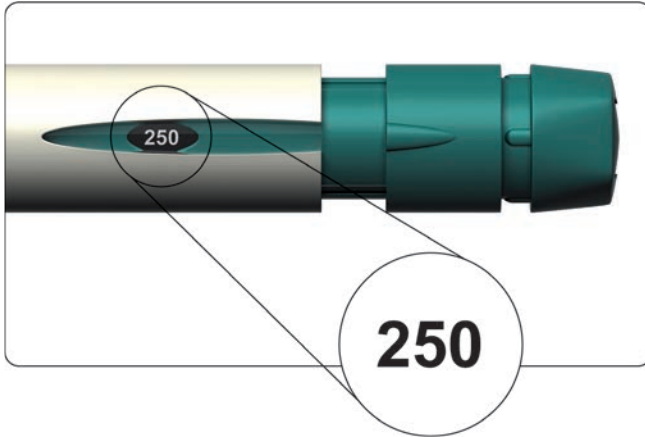
## 4. Setting the dose to 250

- Gently turn the dose-setting knob clockwise. The dose display window will show a straight line and you have to keep turning until you can see the number "250".
- Do not push or pull the dose-setting knob while you turn it.



- 30 -

- The dose display window should show "250", as shown in the figure below.



## 5. Injecting the dose

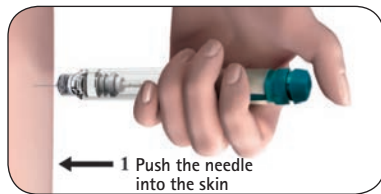
**5.1** Choose the injection site - where your doctor or nurse has told you to inject.

**5.2** Clean the skin at the injection site by wiping it with an alcohol swab.

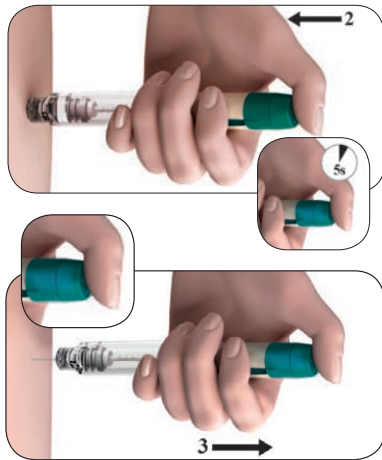
**5.3** Verify once more that the number in the **dose display window** is **"250"**.  
If it is not, you must adjust it (see section "4. Setting the dose to 250").

**5.4 Inject the dose as you were instructed by your doctor or nurse**

- Slowly push the needle into the skin entirely (1).
- **Press the dose-setting knob down as far as it will go** and hold it to complete the full injection.



- Hold the dose-setting knob down for a minimum of 5 seconds (S) to ensure that you injected the full dose (2).
- **The number of dose units shown in the dose display window, will turn back to "0". This indicates that the complete dose was delivered.**
- After a minimum of 5 seconds, pull the needle out of the skin while still pressing on the dose-setting knob (3).
- Release the dose-setting knob.



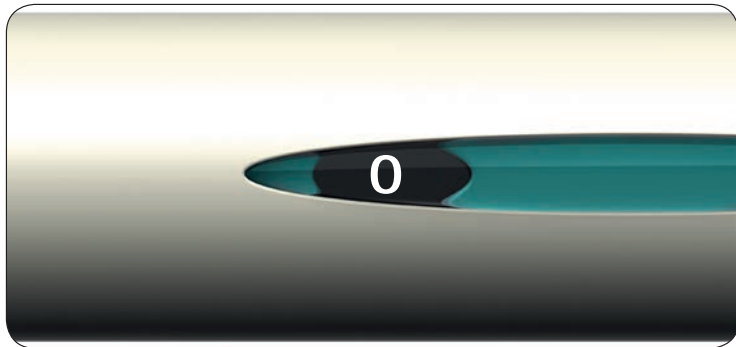
English

- 33 -

## 6. After the injection

### 6.1 Check that the dose display window shows "0"

- This confirms that the full dose was delivered. **Do not attempt to inject a second time.**
- In case the dose display window does not show "0", refer to your doctor or pharmacist.

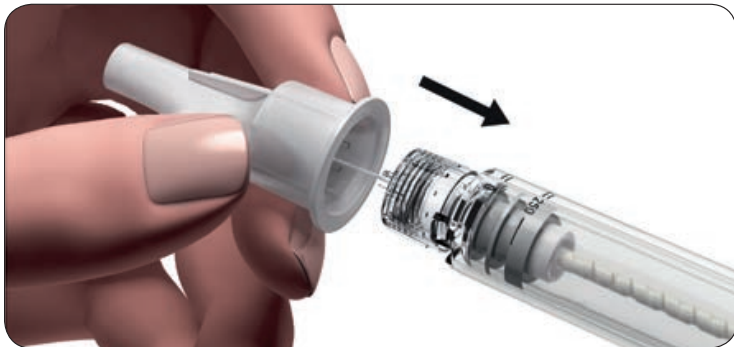


- 34 -



## 6.2 Removing the needle after the injection

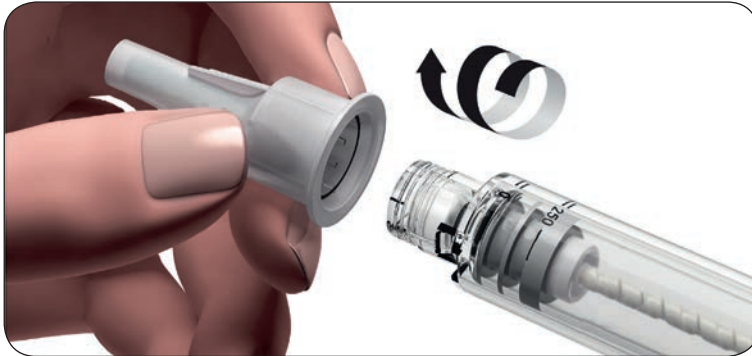
- Hold the drug reservoir holder part of the pen firmly.
- Carefully put the outer needle cap onto the needle.



English

- 35 -

- Then grip the outer needle cap and unscrew the needle.



- Be careful not to prick yourself with the needle.
- Now put the pen cap back onto the pen.

## 6.3 Disposal

- Use each needle and pen only once.
- After you have finished the injection, dispose of the used needle safely.
- Discard the pen. It is best to put it back into its original package.
- When the pen is empty, ask your pharmacist how to dispose of it.



**Warning:** Medicines should not be disposed of via wastewater or household waste.

**These instructions for use were approved by the Ministry of Health in August 2017**

English

- 37 -