

Patient leaflet in accordance with the Pharmacists' Regulations (Preparations) - 1986

This medicine is dispensed with a doctor's prescription only

Besremi 250 MCG/0.5 mL Besremi 500 MCG/0.5 mL

Solution for Injection in pre-filled pen

Composition:

Each pre-filled pen of Besremi 250 MCG/0.5 mL contains 250 micrograms of the active substance ropeginterferon alfa-2b. Each pre-filled pen of Besremi 500 MCG/0.5 mL contains 500 micrograms of the active substance ropeginterferon alfa-2b.

Inactive ingredients: See section 6.

- **Read the entire leaflet carefully before you start using this medicine.** This leaflet contains concise information about this medicine. If you have any further questions, consult with your doctor or pharmacist.
- This medicine has been prescribed to treat your illness. Do not pass it on to others. It may harm them, even if it seems to you that their illness is similar to yours.

1. What is this medicine used for?

Besremi is used as monotherapy in adults for the treatment of polycythaemia vera without symptomatic splenomegaly. Polycythaemia vera is a type of cancer in which the bone marrow produces too many red blood cells, white blood cells and platelets (cells that help the blood to clot).

Therapeutic group: Immunostimulants, interferons.

Besremi contains the active substance ropeginterferon alfa-2b, which belongs to the class of medicinal products called interferons. Interferons are produced by your immune system to block the growth of cancer cells.

2. Before using this medicine

Do not use this medicine if:

- you are sensitive (allergic) to the active substance (ropeginterferon alfa-2b) or to any of the other ingredients of this medicine (see the list of inactive ingredients in section 6).
- you have thyroid disease that is not controlled with medicines.
- you have or had severe mental disorders (such as depression or suicidal thoughts or if you tried to kill yourself).
- you have recently had severe heart problems (such as heart attack or stroke).
- you have or had an autoimmune disease (such as rheumatoid arthritis, psoriasis or inflammatory bowel disease).
- you had an organ transplantation and you take medicines which suppress your immune system.
- you take telbivudine (a medicine used to treat hepatitis B infection).
- you have advanced, uncontrolled liver disease.
- you have severe kidney disease (with your kidneys working at less than 15% of their normal ability).

Special warnings about using this medicine:

Talk to your doctor before using Besremi if:

- you have thyroid disease.
- you have diabetes or high blood pressure – your doctor may ask you to have an eye examination.
- you have liver problems – you will have blood tests regularly to check how your liver is working if you are on a long-term Besremi therapy.
- you have kidney problems.
- you have psoriasis or other skin problems because they may get worse during treatment with Besremi.

Once you have started Besremi treatment, talk to your doctor if:

- you develop symptoms of depression (such as feelings of sadness, dejection, and suicidal thoughts).
- you develop signs of a severe allergic reaction [such as difficulty in breathing, wheezing or hives (allergic reaction of the skin)] while using Besremi – if this is the case you will need to seek medical help immediately.
- you develop symptoms of a cold or other respiratory infection (such as difficulty in breathing, cough, fever and chest pain).
- you have changes in your vision – you must tell your doctor and have an immediate eye examination. Severe eye problems may occur during Besremi therapy. Your doctor will usually check your vision before starting your treatment. If you have health problems which may lead to eye problems such as diabetes or high blood pressure, your doctor should check your vision also during treatment. If your vision worsens, your doctor may decide to discontinue your treatment.

Dental and gum disorders, which may lead to loss of teeth, can occur with interferon medicines. In addition, dry mouth could damage teeth and the lining of the mouth during long-term treatment with Besremi. You should brush your teeth thoroughly twice daily and have regular dental checks.

It will need a certain time to reach your individual optimal dose of Besremi. Your doctor will decide if it is necessary to treat you with another medicine for an early reduction of your blood cell number to prevent blood clots and bleeding.

Children and adolescents:

Do not give this medicine to children and adolescents because no information is available on the use of Besremi in this age group.

Drug interactions:

If you are taking or have recently taken, other medicines including non-prescription medications and dietary supplements, tell your doctor or pharmacist. Especially if you are taking:

Do not use Besremi if you are taking telbivudine (for treating hepatitis B) since the combination of these medicines increases the risk of peripheral neuropathy (numbness, tingling, or burning sensations in the arms and legs). Tell your doctor if you are being treated with telbivudine.

Tell your doctor especially if you are taking any of the following medicines:

- theophylline (a medicine used to treat respiratory diseases such as asthma)
- methadone (a medicine used to treat pain or opioid dependence)
- vortioxetine or risperidone (medicines used to treat mental disorders)
- anti-cancer medicines such as those stopping or slowing the growth of blood-forming cells in the bone marrow (e.g. hydroxycarbamide)
- medicines that work on the central nervous system to relieve pain, help you sleep, or have a calming effect (e.g. morphine, midazolam)

Pregnancy, breast-feeding and fertility:

If you are pregnant or breast-feeding, think you may be pregnant or are planning to have a baby, ask your doctor or pharmacist for advice before using this medicine.

Pregnancy

The effect of Besremi during pregnancy is not known. The use of Besremi is not recommended during pregnancy and in women of childbearing potential not using contraception. If you are a woman of childbearing potential, your doctor will discuss with you if effective birth control should be used during your treatment with Besremi.

Breast-feeding

It is not known if Besremi is present in breast milk. Your doctor will help you decide if you have to stop breast-feeding when you are using this medicine.

Driving and using machines:

Besremi has minor influence on the ability to drive or use machines. Do not drive or use machines if you feel dizzy, sleepy or confused while using Besremi.

Important information about some of this medicine's ingredients:

Besremi contains benzyl alcohol.

This medicine contains 5 mg benzyl alcohol in each 0.5 mL. Benzyl alcohol may cause allergic reactions.

Ask your doctor or pharmacist for advice:

- if you are pregnant or breast-feeding.
- if you have a liver or kidney disease.

This is because large amounts of benzyl alcohol can build-up in your body and may cause side effects (called "metabolic acidosis").

Besremi contains polysorbate 80

This medicine contains 0.025 mg of polysorbate 80 in each 0.5 mL. Polysorbates may cause allergic reactions. Tell your doctor if you have any known allergies.

Besremi contains sodium

This medicine contains less than 1 mmol sodium (23 mg) per mL, that is to say essentially 'sodium-free'.

3. How to use this medicine?

Always use this medicine according to the doctor's instructions.

Check with your doctor or pharmacist if you are not sure about the dosage and the treatment regimen of this medicine. The dosage and the treatment regimen will be determined by the doctor only. The usual dosage is:

The dose will be set individually for you by your doctor for your condition. The usual starting dose of Besremi is 100 microgram every 2 weeks. Your doctor will then increase your dose stepwise and may adjust your dose during treatment. Your doctor will reduce your starting dose to 50 micrograms if you have severe kidney problems.

This medicine is for subcutaneous use which means that it is injected in the tissue under your skin. It should not be injected into an area of the body where the skin is irritated, reddened, bruised, infected, or scarred.

If you are injecting this medicine yourself, you will get clear instructions on how to prepare and inject it.

To prevent passing on infectious diseases, you should never share Besremi pre-filled pen with anyone else, even when the needle is changed.

Details on how to prepare and inject the medicine are given in the "Instructions for Use". Read them before you start using Besremi.

Do not exceed the recommended dose.

If you use more Besremi than you should:

Tell your doctor as soon as possible.

If you forget to use the medicine:

You should inject the dose as soon as you remember. However, if more than 2 days have passed since you missed the dose, leave out the dose and inject the next dose when it is due. Do not inject a double dose to make up for a forgotten dose. Check with your doctor or pharmacist if you are not sure.

Adhere to the treatment as recommended by your doctor. Even if your health improves, do not stop taking this medicine without consulting with your doctor.

If you stop using the medicine:

Do not stop taking this medicine without consulting with your doctor.

Do not take medicines in the dark! Check the label and the dose each time you take medicine.

Wear glasses if you need them.

If you have any further questions about using this medicine, consult with your doctor or pharmacist.

4. Side effects:

Like with all medicines, using Besremi may cause side effects in some users. Do not be alarmed by this list of side effects. You may not experience any of them.

Contact your doctor immediately if you notice any of the following serious side effects during your treatment with Besremi:

Common side effects (affect 1-10 out of 100 users):

- changes in your heartbeat (when the heart beats very fast and uneven)

Uncommon side effects (affect 1-10 out of 1000 users):

- attempted suicide, thoughts about killing yourself

- loss of vision which may be caused by bleeding in the retina (the retina is the light-sensitive layer in the eye), or by build-up of fat in or under the retina.

Rare side effects (affect 1-10 out of 10000 users):

- loss of vision which may be caused by damage to the retina (such as obstruction of the blood vessels in the eye) or the optic nerve.

Very rare side effects (affect up to 1 in 10,000 users):

- blindness
- breathing problems including shortness of breath, cough and chest pain which may be caused by lung infiltration, pneumonia (lung infection), pulmonary arterial hypertension (high blood pressure in the blood vessels bringing blood from the heart to the lungs) and pulmonary fibrosis (a lung disease where scars are formed in the lung tissue)

Side effects with frequency not known (cannot be estimated from the available data):

- detachment of the retina (you may experience eye problems including changes in vision)

Other side effects

Very common side effects (affect more than 1 in 10 users):

- decrease in the number of a type of white blood cells (called leucocytes) and in blood clotting cells (called platelets)
- joint or muscle pain
- flu-like symptoms, feeling tired
- in blood tests: increase of an enzyme called gamma-glutamyltransferase

Common side effects (affect 1-10 out of 100 users):

- infection of the respiratory tract, runny or stuffy nose, fungal infections, flu
- decrease in the number or size of red blood cells
- increase or decrease in the thyroid gland activity, increase of thyroid stimulating hormone, inflammation of the thyroid gland
- increase of triglycerides (a type of lipid) in the blood, decreased appetite
- aggressive behaviour, feeling depressed, feeling anxious, problems with falling asleep or staying asleep, mood changes, lacking bodily energy or motivation
- headache, feeling dizzy, reduced sense of touch or sensation, feeling sleepy, sensation of tingling and 'pins and needles'
- dry eyes
- damage of the capillaries (very small blood vessels) in the body
- breathing problems
- diarrhoea, nausea, abdominal pain or stomach discomfort, constipation, dry mouth
- liver disorder, increase in certain liver enzymes (shown in blood tests)
- itching, hair loss, rash, redness of skin, psoriasis, dry and scaly skin, acne, thickening of the outer layer of the skin, increased sweating
- a disorder called Sjogren's syndrome where the body's immune system attacks glands that produce fluid (such as the tear and saliva glands), arthritis, pain in arms and legs, bone pain, painful sudden tightening of a muscle
- fever, weakness, chills, general health problems, irritation or redness at the site of injection, decreasing body weight
- in blood tests: antibodies which are produced by the body's immune system, increase of an enzyme called lactate dehydrogenase

Uncommon side effects (affect 1-10 out of 1000 users):

- infection and re-infection with herpes, bacterial infections
- increase in the number of platelets
- autoimmune disorder of the thyroid gland, sarcoidosis (areas of inflamed tissue in different parts of the body)
- diabetes
- panic attack, hallucination (seeing, hearing or feeling things that are not there), feeling stressed, feeling nervous, lack of interest in activities, nightmare, irritability, confusion
- damage to the nervous system, migraine, mental disorder (health condition involving changes in thinking, emotion or behaviour), visual or sensory disturbances, shaky hands
- eye discomfort, eyelid eczema
- hearing loss, ringing in ears (tinnitus), spinning feeling (vertigo)
- heart disorders such as heart block (a disorder in the heart's electrical activity), blood clots in the blood vessels of the heart, leakage of the aortic valve
- high blood pressure, reduced blood supply to certain parts of the body, haematoma (haemorrhage, collection of blood under the skin), flushing
- inflammation of lung tissue, coughing, nosebleed, sore throat
- inflammation of the stomach, abdominal wall disorder, intestinal gas, indigestion, painful swallowing, bleeding gums
- inflammation of the liver, damage to the liver, enlarged liver
- sensitivity to sunlight, peeling of the skin, nail disorder
- muscle weakness, neck pain, groin pain
- inflammation of the bladder, painful urination, increased need to urinate, inability to urinate
- sexual problems
- pain or itching at the site of injection, sensitivity to weather change
- non-acute porphyria (a liver disorder in which substances called porphyrins build up in the skin causing local skin damage, such as rashes, blisters, sores or discomfort, upon sun exposure)
- in blood tests: increase of uric acid, antibodies produced by the body's immune system against red blood cells

Rare side effects (affect 1-10 out of 10000 users):

- bipolar disorders (mood disorders with episodes of sadness and excitement), mania (extreme excitement or unreasonable enthusiasm)
- cardiomyopathy (diseases that affect the heart muscle), angina pectoris (a severe chest pain as a result of blockage of the heart vessels)
- liver failure

Very rare side effects (affect up to 1 in 10,000 users):

- idiopathic or thrombotic thrombocytopenic purpura (increased bruising, bleeding, decreased platelets, anaemia and extreme weakness)
- myocardial ischemia (reduced blood flow to your heart muscle)

Side effects with frequency not known (cannot be estimated from the available data):

- Vogt-Koyanagi-Harada disease (a rare disease that can lead to loss of vision, hearing and skin pigmentation), severe allergic reaction
- discolouration of the skin
- periodontal (affecting gums) and dental disorders, change in colour of the tongue

If you experience any side effect, if any side effect gets worse, or if you experience a side effect not mentioned in this leaflet, consult with the doctor.

Reporting of side effects

Side effects can be reported to the Ministry of Health by clicking on the link: "Reporting of side effects from drug treatment", which can be found on the Ministry of Health homepage (www.health.gov.il) that directs you to the online form for reporting side effects, or by entering the link:

<https://sideeffects.health.gov.il>

5. How to store the medicine?

Prevent poisoning! To prevent poisoning, keep this, and all other medicines, in a closed place, out of the reach and sight of children and/or infants. Do not induce vomiting unless explicitly instructed to do so by a doctor.

Do not use the medicine after the expiry date (exp. date) which is stated on the package and the label. The expiry date refers to the last day of that month.

Storage conditions:

Store in a refrigerator (2°C – 8°C).

Do not freeze.

Keep the pre-filled pen in the outer carton in order to protect from light.

After the first opening, the pre-filled pen may be stored for a maximum of 30 days in the refrigerator (2°C - 8°C) when stored with the pen cap on and kept in the outer carton in order to protect from light.

The pre-filled pen may be used up to two times within these 30 days.

Any medicine remaining in the pre-filled pen after the second use and/or after 30 days since first opening, must be discarded.

Do not use this medicine if you notice that the pre-filled pen appears damaged, the solution is cloudy, has particles or flakes, or has any colour other than colourless to slightly yellow.

Do not throw away any medicines via wastewater or household waste. Ask your pharmacist how to throw away medicines you no longer use. These measures will help protect the environment.

6. Additional information:

In addition to the active ingredient, this medicine also contains:

Benzyl alcohol, Sodium chloride, Anhydrous sodium acetate, Acetic acid, Polysorbate 80, Water for injections.

See section 2 of the leaflet for information on the ingredients Benzyl alcohol, Polysorbate 80 and Sodium.

What the medicine looks like and contents of the pack:

Besremi is presented as a solution for injection in a pre-filled pen. Each pre-filled pen contains 0.5 mL of solution. Each pack contains a pre-filled pen and 2 injection needles.

Not all pack sizes may be marketed.

Registration holder: AOP ORPHAN PHARMACEUTICALS ISRAEL LTD., 10 Riza St. Aseret 7685800

Manufacturer:

AOP Orphan Pharmaceuticals GmbH Leopold-Ungar-Platz 2, 1190, Vienna, Austria

Revised in July 2025.

Registration number of the medicine in the Ministry of Health's National Drug Registry:

Besremi 250 MCG/0.5 mL: 166-66-36574

Besremi 500 MCG/0.5 mL: 166-67-36575

Besremi 250 MCG/0.5 mL - Instructions for Using the Pre-Filled Pen

Please read this leaflet carefully before using the Besremi 250 micrograms pre-filled pen. If you have any further questions, ask your doctor or pharmacist.

Your doctor or pharmacist will show you how to use the pre-filled pen.

The Besremi 250 micrograms pre-filled pen can be used to inject doses of 50, 100, 150, 200 and 250 micrograms. At doses up to 100 micrograms, the same pen can be used twice. Your doctor will tell you the dose you need. Please note down your injection dates and dose as instructed by your doctor.

If you need a dose of more than 250 micrograms, you require two Besremi 250 microgram pre-filled pens. You must use a different injection site for each of the two pens. Your doctor or pharmacist will explain to you how to use the two pens. Store the pen in the outer carton in the refrigerator.

Remove the pen from the refrigerator 15 minutes before the injection to let it reach room temperature. Find a quiet and well-lit area for the injection.

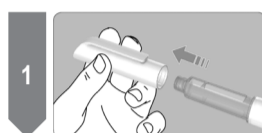
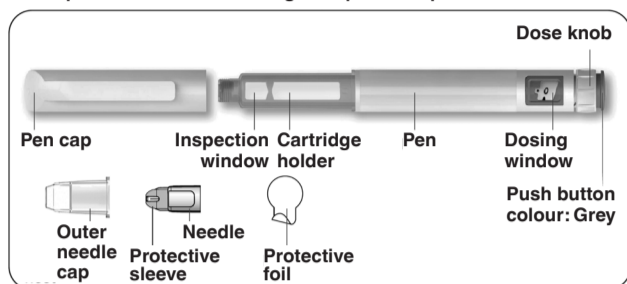
You will need the following supplies for your injection:

- Besremi pre-filled pen
- Injection needle
- Alcohol wipe (not supplied)
- Optional: adhesive plaster (not supplied)

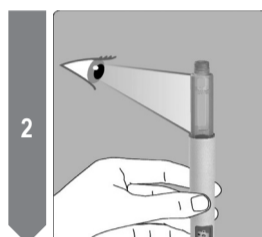
The Besremi pre-filled pen comes with two injection needles. Always use a new needle for each injection.

Do not use the pen if it appears damaged. If at any time during the use of the pen, you feel you may have damaged it (e.g. by dropping it or using excessive force), do not continue to use the pen. Get a new pen and start over.

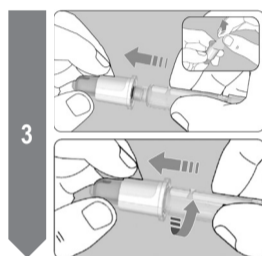
Description Besremi 250 micrograms pre-filled pen



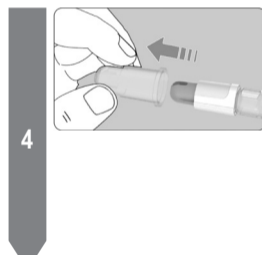
- Wash your hands before using Besremi.
- Check that the product has not expired.
- Remove the cap from the pen.



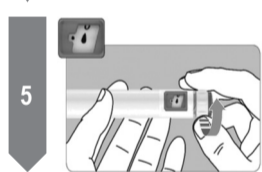
- Check the solution through the inspection windows along the sides of the cartridge holder.
- Do not use the pen if the solution is cloudy, has particles or flakes, or is any colour other than colourless to slightly yellow.



- Take a new needle and remove the protective foil.
- Place the pen straight and centrally arranged onto the needle to prevent it from buckling or bending.
- Make sure that it is firmly attached.



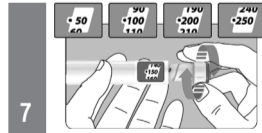
- Remove the outer needle cap from the needle.
- Do not put the outer needle cap back on the needle until you have injected the medicine. Do not touch the needle tip at any time.
- If you have used your Besremi 250 microgram pre-filled pen once before and are using it a second time, continue directly with step 7.
- If you are using this pen for the first time, continue with preparation of the pen in step 5.



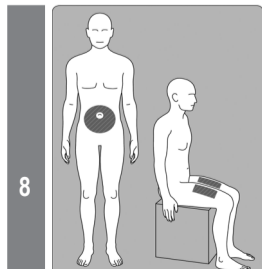
- If you are using this pen for the first time, prepare the pen for injection by turning the dose knob until you see the icon of a "drop" and the dot in the dosing window. The icon of a "drop" must be aligned with the dot in the dosing window.



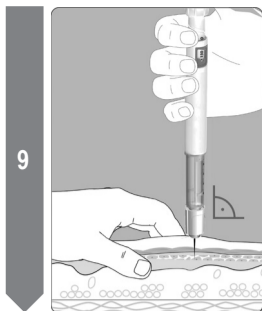
- Hold the pen with the needle pointing upwards and make sure the dosing window is facing you.
- Do not point towards your face or anyone else's face.
- Tap the pen (cartridge holder) gently with your fingers to allow any air bubbles to rise to the top of the cartridge holder.
- Press the push button with your thumb until the "0" mark is aligned with the dot in the dosing window.
- You will see the window changes between the "drop" icon and the "0" mark, and you will hear gentle clicks when the button moves.
- If you look through the small gap at the top of the orange needle protective sleeve, you should see a droplet of liquid appearing at the needle tip.
- If you do not see a droplet at the needle tip, repeat steps 5 and 6 up to six times until a droplet appears.
- If you do not see the droplet after the seventh time, ask your doctor or pharmacist for advice.



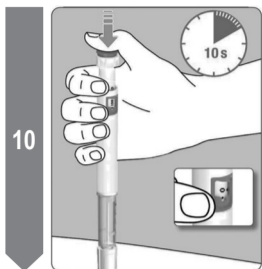
- Set the dose your doctor advised by turning the dose knob until the prescribed dose is visible. The selected dose must align with the dot in the dosing window. If necessary, correct the dose by turning the dose knob up and down.
- If you are unable to reach the required dose setting by turning the dose knob, your pen may be out of sufficient medicine. Do not use any further force. Instead, get a new pen.



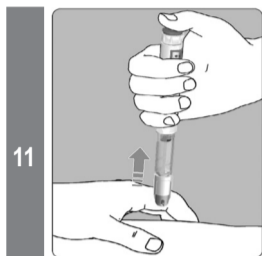
- Disinfect your skin in the injection area using an alcohol swab before the injection.
- Let the area dry before you inject the medicine.
- You must inject the medicine subcutaneously (under the skin). Your doctor will tell you where you must inject it.
- Possible injection sites are the belly (more than five centimeters away from the belly button) or the thigh.
- If you need two pens, use a different injection site for each pen (e.g. right and left side of belly or right and left thigh).
- Do not inject into irritated, reddened, bruised, infected or scarred skin in any way.



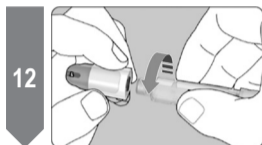
- Hold the pen so that the dosing window and the label are visible during the injection.
- Raise a fold of skin between the thumb and forefinger.
- Insert the needle at a 90 degrees angle until the orange protective sleeve on the needle is no longer visible.



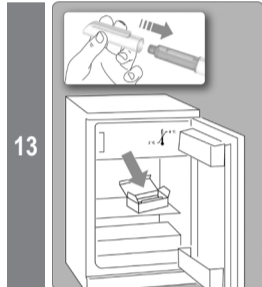
- Press the push button all the way down until the "0" mark is aligned with the dot in the dosing window.
- The soft clicking sounds will stop when the injection is complete.
- Continue pressing the pushed button while keeping the needle in your skin.
- Count slowly to 10. Do not lift or move the pen during injection.
- If the needle is removed earlier, you may see a stream of solution coming from the needle tip. If so, the full dose will not be delivered.



- Carefully remove the needle from the skin by pulling straight upwards.
 - Keep the injection site clean until the small injection wound has closed. Apply an adhesive plaster if needed.
- Note:
- The orange protective sleeve locks automatically and the now visible red locking indicator covers the needle for your protection. If this is not the case, please ask your doctor or pharmacist.
 - After removing the needle, a small droplet of liquid may remain on your skin. This droplet is normal and does not mean that you underdosed.



- Rotate the pen counterclockwise and dispose of the needle properly.
- Note:
- Once the needle has been unscrewed, another red locking indicator covers the bottom of the needle for additional safety.



Note: Put the cap back on the pen securely.

Reuse of the pen:

- Your doctor will tell you if you may use the pen for a second injection. In this case, put the pen back into the outer carton and store it in the refrigerator for the next use. Do not use the pen again after 30 days.

Disposal of the pen and needle:

- Discard the pen and needle after use according to local regulations or as instructed by your doctor or pharmacist.

Besremi 500 MCG/0.5 mL - Instructions for Using the Pre-Filled Pen

Please read this leaflet carefully before using the Besremi 500 micrograms pre-filled pen. If you have any further questions, ask your doctor or pharmacist.

Your doctor or pharmacist will show you how to use the pre-filled pen.

The Besremi 500 micrograms pre-filled pen can be used to inject doses of 50, 100, 150, 200, 250, 300, 350, 400, 450 and 500 micrograms. At doses up to 250 micrograms, the same pen can be used twice. Your doctor will tell you the dose you need. Please note down your injection dates and dose as instructed by your doctor.

Store the pen in the outer carton in the refrigerator.

Remove the pen from the refrigerator 15 minutes before the injection to let it reach room temperature.

Find a quiet and well-lit area for the injection.

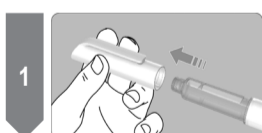
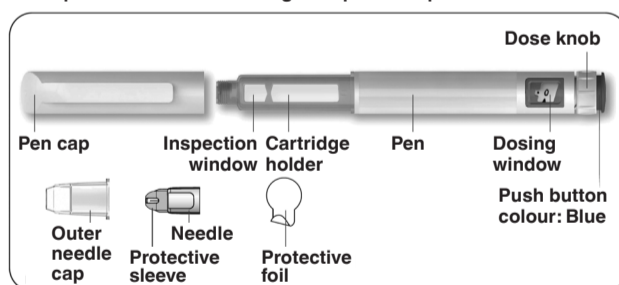
You will need the following supplies for your injection:

- Besremi pre-filled pen
- Injection needle
- Alcohol wipe (not supplied)
- Optional: adhesive plaster (not supplied)

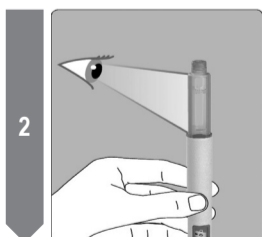
The Besremi pre-filled pen comes with two injection needles. Always use a new needle for each injection.

Do not use the pen if it appears damaged. If at any time during the use of the pen, you feel you may have damaged it (e.g. by dropping it or using excessive force), do not continue to use the pen. Get a new pen and start over.

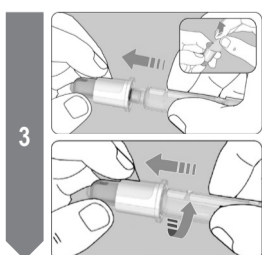
Description Besremi 500 micrograms pre-filled pen



- Wash your hands before using Besremi.
- Check that the product has not expired.
- Remove the cap from the pen.

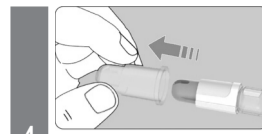


- Check the solution through the inspection windows along the sides of the cartridge holder.
- Do not use the pen if the solution is cloudy, has particles or flakes, or is any colour other than colourless to slightly yellow.

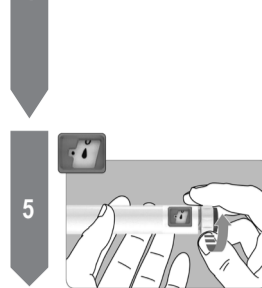


- Take a new needle and remove the protective foil.
- Place the pen straight and centrally arranged onto the needle to prevent it from buckling or bending.
- Make sure that it is firmly attached.

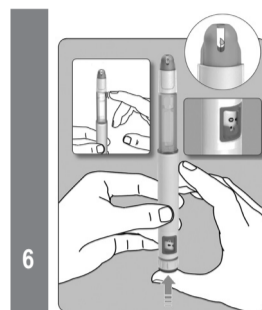
- Screw the needle onto the pen by turning the pen clockwise with gentle pressure until it stops.



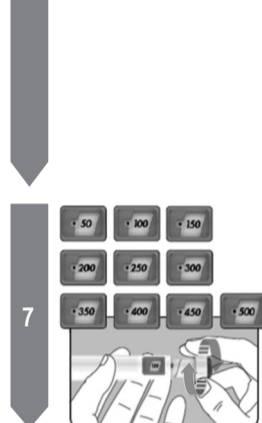
- Remove the outer needle cap from the needle.
- Do not put the outer needle cap back on the needle until you have injected the medicine. Do not touch the needle tip at any time.
- If you have used your Besremi 500 microgram pre-filled pen once before and are using it for the second time, continue directly with step 7.
- If you are using this pen for the first time, continue with preparation of the pen in step 5.



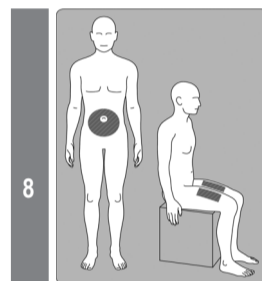
- If you are using this pen for the first time, prepare the pen for injection by turning the dose knob until you see the icon of a "drop" and the dot in the dosing window. The icon of a "drop" must be aligned with the dot in the dosing window.



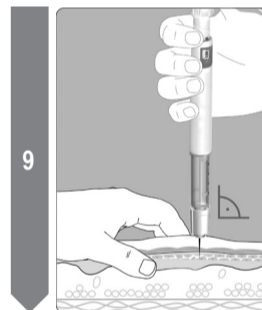
- Hold the pen with the needle pointing upwards and make sure the dosing window is facing you.
- Do not point towards your face or anyone else's face.
- Tap the pen (cartridge holder) gently with your fingers to allow any air bubbles to rise to the top of the cartridge holder.
- Press the push button with your thumb until the "0" mark is aligned with the dot in the dosing window.
- You will see the window changes between the "drop" icon and the "0" mark, and you will hear gentle clicks when the button moves.
- If you look through the small gap at the top of the orange needle protective sleeve, you should see a droplet of liquid appearing at the needle tip.
- If you do not see a droplet at the needle tip, repeat steps 5 and 6 up to six times until a droplet appears.
- If you do not see the droplet after the seventh time, ask your doctor or pharmacist for advice.



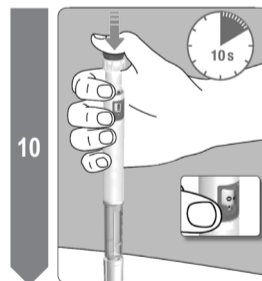
- Set the dose your doctor advised by turning the dose knob until the prescribed dose is visible. The selected dose must align with the dot in the dosing window. If necessary, correct the dose by turning the dose knob up and down.
- If you are unable to reach the required dose setting by turning the dose knob, your pen may be out of sufficient medicine. Do not use any further force. Instead, get a new pen.



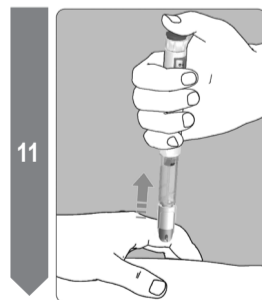
- Disinfect your skin in the injection area using an alcohol swab before the injection.
- Let the area dry before you inject the medicine.
- You must inject the medicine subcutaneously (under the skin). Your doctor will tell you where you must inject it.
- Possible injection sites are the belly (more than five centimeters away from the belly button) or the thigh.
- If you need two pens, use a different injection site for each pen (e.g. right and left side of belly or right and left thigh).
- Do not inject into irritated, reddened, bruised, infected or scarred skin in any way.



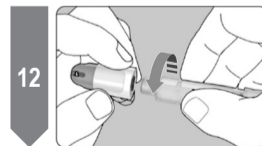
- Hold the pen so that the dosing window and the label are visible during the injection.
- Raise a fold of skin between the thumb and forefinger.
- Insert the needle at a 90 degrees angle until the orange protective sleeve on the needle is no longer visible.



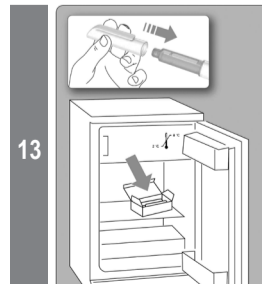
- Press the push button all the way down until the "0" mark is aligned with the dot in the dosing window.
- The soft clicking sounds will stop when the injection is complete.
- Continue pressing the pushed button while keeping the needle in your skin.
- Count slowly to 10. Do not lift or move the pen during injection.
- If the needle is removed earlier, you may see a stream of solution coming from the needle tip. If so, the full dose will not be delivered.



- Carefully remove the needle from the skin by pulling straight upwards.
 - Keep the injection site clean until the small injection wound has closed. Apply an adhesive plaster if needed.
- Note:
- The orange protective sleeve locks automatically and the now visible red locking indicator covers the needle for your protection. If this is not the case, please ask your doctor or pharmacist.
 - After removing the needle, a small droplet of liquid may remain on your skin. This droplet is normal and does not mean that you underdosed.



- Rotate the pen counterclockwise and dispose of the needle properly.
- Note:
- Once the needle has been unscrewed, another red locking indicator covers the bottom of the needle for additional safety.



Note: Put the cap back on the pen securely.

Reuse of the pen:

- Your doctor will tell you if you may use the pen for a second injection. In this case, put the pen back into the outer carton and store it in the refrigerator for the next use. Do not use the pen again after 30 days.

Disposal of the pen and needle:

- Discard the pen and needle after use according to local regulations or as instructed by your doctor or pharmacist.