

UBRELVY 50mg

UBRELVY 100mg

QUALITATIVE AND QUANTITATIVE COMPOSITION

UBRELVY 50 mg

Each tablet contains 50 mg of ubrogepant (equivalent to 54.9 mg of ubrogepant free base trihydrate)

UBRELVY 100 mg

Each tablet contains 100 mg of ubrogepant (equivalent to 109.8 mg of ubrogepant free base trihydrate)

1 INDICATIONS AND USAGE

UBRELVY is a calcitonin gene-related peptide receptor antagonist indicated for the acute treatment of migraine with or without aura in adults.

Limitations of Use

UBRELVY is not indicated for the preventive treatment of migraine.

2 DOSAGE AND ADMINISTRATION

2.1 Recommended Dosage

The recommended dose of UBRELVY is 50 mg or 100 mg taken orally with or without food.

If needed, a second dose may be taken at least 2 hours after the initial dose. The maximum dose in a 24-hour period is 200 mg. The safety of treating more than 8 migraines in a 30-day period has not been established.

2.2 Dosage Modifications

Dosing modifications for concomitant use of specific drugs and for patients with hepatic or renal impairment are provided in Table 1.

Table 1: Dose Modifications for Drug Interactions and for Specific Populations

Dosage Modifications	Initial Dose	Second Dose ^a (if needed)
Concomitant Drug [see Drug Interactions (7)]		
Moderate CYP3A4 Inhibitors (7.1)	50 mg	Avoid within 24 hours
Weak CYP3A4 Inhibitors (7.1)	50 mg	50 mg
Strong CYP3A4 Inducers (7.2)	Avoid concomitant use	
Weak & Moderate CYP3A4 Inducers (7.2)	100 mg	100 mg
BCRP and/or P-gp only Inhibitors (7.3)	50 mg	50 mg
Specific Populations [see Use in Specific Populations (8)]		

Severe Hepatic Impairment (Child-Pugh Class C) (8.6)	50 mg	50 mg
Severe Renal Impairment (CLcr 15-29 mL/min) (8.7)	50 mg	50 mg
End-Stage Renal Disease (CLcr <15 mL/min) (8.7)	Avoid use	

^a Second dose may be taken at least 2 hours after the initial dose

3 DOSAGE FORMS AND STRENGTHS

UBRELVY 50 mg is supplied as white to off-white, capsule-shaped, biconvex tablets debossed with “U50” on one side.

UBRELVY 100 mg is supplied as white to off-white, capsule-shaped, biconvex tablets debossed with “U100” on one side.

4 CONTRAINDICATIONS

Hypersensitivity to the active substance or to any of the excipients listed in section 11.

UBRELVY is contraindicated with concomitant use of strong CYP3A4 inhibitors [see *Drug Interactions (7.1)*].

6 ADVERSE REACTIONS

6.1 Clinical Trials Experience

Because clinical trials are conducted under widely varying conditions, adverse reaction rates observed in the clinical trials of a drug cannot be directly compared to rates in the clinical trials of another drug and may not reflect the rates observed in practice.

The safety of UBRELVY was evaluated in 3,624 subjects who received at least one dose of UBRELVY. In two randomized, double-blind, placebo-controlled, Phase 3 trials in adult patients with migraine (Studies 1 and 2), a total of 1,439 patients received UBRELVY 50 mg or 100 mg [see *Clinical Studies (14)*]. Of the UBRELVY-treated patients in these 2 studies, approximately 89% were female, 82% were White, 15% were Black, and 17% were of Hispanic or Latino ethnicity. The mean age at study entry was 41 years (range of 18-75 years).

Long-term safety was assessed in 813 patients, dosing intermittently for up to 1 year in an open-label extension study. Patients were permitted to treat up to 8 migraines per month with UBRELVY. Of these 813 patients, 421 patients were exposed to 50 mg or 100 mg for at least 6 months, and 364 patients were exposed to these doses for at least one year, all of whom treated at least two migraine attacks per month, on average. In that study, 2.5% of patients were withdrawn from UBRELVY because of an adverse reaction. The most common adverse reaction resulting in discontinuation in the long-term safety study was nausea.

Adverse reactions in Studies 1 and 2 are shown in Table 2.

Table 2: Adverse Reactions Occurring in At Least 2% and at a Frequency Greater than Placebo in Studies 1 and 2

	Placebo (N= 984) %	UBRELVY 50 mg (N=954) %	UBRELVY 100 mg (N=485) %
Nausea	2	2	4
Somnolence*	1	2	3
Dry Mouth	1	<1	2

*Somnolence includes the adverse reaction-related terms sedation and fatigue.

Effects on ability to drive and use machines

UBRELVY has no or negligible influence on the ability to drive and use machines.

Reporting of suspected adverse reactions

Reporting suspected adverse reactions after authorization of the medicinal product is important. It allows continued monitoring of the benefit/risk balance of the medicinal product. Any suspected adverse events should be reported to the Ministry of Health according to the National Regulation by using an online form

<https://sideeffects.health.gov.il>

7 DRUG INTERACTIONS

7.1 CYP3A4 Inhibitors

Co-administration of UBRELVY with ketoconazole, a strong CYP3A4 inhibitor, resulted in a significant increase in exposure of ubrogepant [*see Clinical Pharmacology (12.3)*]. UBRELVY should not be used with strong CYP3A4 inhibitors (e.g., ketoconazole, itraconazole, clarithromycin) [*see Contraindications (4)*].

Co-administration of UBRELVY with verapamil, a moderate CYP3A4 inhibitor, resulted in an increase in ubrogepant exposure [*see Clinical Pharmacology (12.3)*]. Dose adjustment is recommended with concomitant use of UBRELVY and moderate CYP3A4 inhibitors (e.g., cyclosporine, ciprofloxacin, fluconazole, fluvoxamine, grapefruit juice) [*see Dosage and Administration (2.2)*].

No dedicated drug interaction study was conducted with ubrogepant and weak CYP3A4 inhibitors. Dose adjustment is recommended with concomitant use of UBRELVY with weak CYP3A4 inhibitors [*see Dosage and Administration (2.2)*].

7.2 CYP3A4 Inducers

Co-administration of UBRELVY with rifampin, a strong CYP3A4 inducer, resulted in a significant reduction in ubrogepant exposure [*see Clinical Pharmacology (12.3)*]. In patients taking strong CYP3A4 inducers (e.g., phenytoin, barbiturates, rifampin, St. John's Wort), loss of ubrogepant efficacy is expected, and concomitant use should be avoided.

Co-administration of UBRELVY with moderate or weak CYP3A4 inducers was not evaluated in a clinical study. Dose adjustment is recommended with concomitant use of UBRELVY and moderate or weak CYP3A4 inducers [*see Dosage and Administration (2.2)*].

7.3 BCRP and/or P-gp Only Inhibitors

Ubrogepant is a substrate of BCRP and P-gp efflux transporters. Use of BCRP and/or P-gp only inhibitors (e.g., quinidine, carvedilol, eltrombopag, curcumin) may increase the exposure of ubrogepant [see *Clinical Pharmacology (12.3)*]. Clinical drug interaction studies with inhibitors of these transporters were not conducted. Dose adjustment is recommended with BCRP and/or P-gp only inhibitors [see *Dosage and Administration (2.2)*].

8 USE IN SPECIFIC POPULATIONS

8.1 Pregnancy

Risk Summary

There are no adequate data on the developmental risk associated with the use of UBRELVY in pregnant women. In animal studies, adverse effects on embryofetal development were observed following administration of ubrogepant during pregnancy (increased embryofetal mortality in rabbits) or during pregnancy and lactation (decreased body weight in offspring in rats) at doses greater than those used clinically and which were associated with maternal toxicity (see *Data*).

In the U.S. general population, the estimated background risk of major birth defects and miscarriages in clinically recognized pregnancies is 2-4% and 15-20%, respectively. The estimated rate of major birth defects (2.2% -2.9%) and miscarriage (17%) among deliveries to women with migraine are similar to rates reported in women without migraine.

Clinical Considerations

Disease-Associated Maternal and/or Embryo/Fetal Risk

Published data have suggested that women with migraine may be at increased risk of preeclampsia and gestational hypertension during pregnancy.

Data

Animal Data

Oral administration of ubrogepant (0, 1.5, 5, 25, 125 mg/kg/day) to pregnant rats during the period of organogenesis resulted in no adverse effects on embryofetal development. Plasma exposure (AUC) at the highest dose tested is approximately 45 times that in humans at the maximum recommended human dose (MRHD) of 200 mg/day.

In pregnant rabbits, ubrogepant (0, 15, 45, 75, or 250 mg/kg/day) was administered orally throughout organogenesis in two separate studies. In both studies, the highest dose tested (250 mg/kg/day) was associated with maternal toxicity. In the first study, ubrogepant produced abortion and increased embryofetal mortality in surviving litters at the high dose (250 mg/kg/day). In the second study, excessive maternal toxicity at the high dose (250 mg/kg/day) resulted in early termination and lack of fetal data for that dose group. Plasma exposure (AUC) at the highest no-effect dose (75 mg/kg/day) for adverse effects on embryofetal development in rabbit is approximately 8 times that in humans at the MRHD.

Oral administration of ubrogepant (0, 25, 60, or 160 mg/kg/day) to rats throughout gestation and lactation resulted in decreased body weight in offspring at birth and during the lactation period at the mid and high doses, which were associated with maternal toxicity. Plasma exposure (AUC) at the no-effect dose for adverse effects on pre- and postnatal development in rats (25 mg/kg/day) is approximately 15 times that in humans at the MRHD.

8.2 Lactation

There are no data on the presence of ubrogepant in human milk, the effects of ubrogepant on the breastfed infant, or the effects of ubrogepant on milk production. In lactating rats, oral dosing with ubrogepant resulted in levels of ubrogepant in milk comparable to peak plasma concentrations. The developmental and health benefits of breastfeeding should be considered along with the mother's clinical need for UBRELVY and any potential adverse effects on the breastfed infant from UBRELVY or from the underlying maternal condition.

8.4 Pediatric Use

The safety and efficacy of in children and adolescents under the age of 18 years have not yet been established.

8.5 Geriatric Use

In pharmacokinetic studies, no clinically significant pharmacokinetic differences were observed between elderly and younger subjects. Clinical studies of UBRELVY did not include sufficient numbers of patients aged 65 years and over to determine whether they respond differently from younger patients. In general, dose selection for an elderly patient should be cautious, usually starting at the low end of the dosing range.

8.6 Hepatic Impairment

In patients with pre-existing mild (Child-Pugh Class A), moderate (Child-Pugh Class B), or severe hepatic impairment (Child-Pugh Class C), ubrogepant exposure was increased by 7%, 50%, and 115%, respectively. No dose adjustment is recommended for patients with mild or moderate hepatic impairment. Dose adjustment for UBRELVY is recommended for patients with severe hepatic impairment [*see Dosage and Administration (2.2)*].

8.7 Renal Impairment

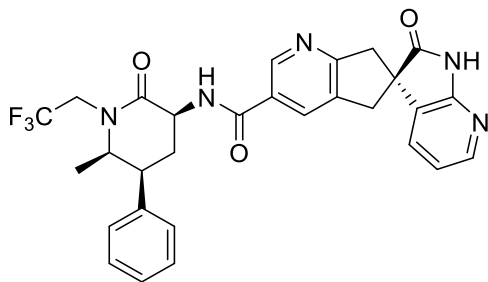
The renal route of elimination plays a minor role in the clearance of ubrogepant [*see Clinical Pharmacology (12.3)*]. No dose adjustment is recommended for patients with mild or moderate renal impairment. Dose adjustment is recommended for patients with severe renal impairment (CL_{cr} 15-29 mL/min) [*see Dosage and Administration (2.2) and Clinical Pharmacology (12.3)*]. Avoid use of UBRELVY in patients with end-stage renal disease (ESRD) (CL_{cr} <15 mL/min).

10 OVERDOSAGE

The elimination half-life of ubrogepant is approximately 5 to 7 hours; therefore, monitoring of patients after overdose with UBRELVY should continue for at least 24 hours, or while symptoms or signs persist.

11 DESCRIPTION

The active ingredient of UBRELVY is ubrogepant, a calcitonin gene-related peptide (CGRP) receptor antagonist. The chemical name of ubrogepant is (3'S)-N-((3S,5S,6R)-6-methyl-2-oxo-5-phenyl-1-(2,2,2-trifluoroethyl)piperidin-3-yl)-2'-oxo-1',2',5,7-tetrahydrospiro[cyclopenta[*b*]pyridine-6,3'-pyrrolo[2,3-*b*]pyridine]-3-carboxamide and has the following structural formula:



The molecular formula is $C_{29}H_{26}F_3N_5O_3$ and molecular weight is 549.6. Ubrogapant is a white to off-white powder. It is freely soluble in ethanol, methanol, acetone, and acetonitrile; and is practically insoluble in water.

UBRELVY is available as tablets for oral administration containing 50 mg or 100 mg ubrogapant. The inactive ingredients include polyvinylpyrrolidone vinyl acetate copolymer, mannitol, sodium chloride, croscarmellose sodium, microcrystalline cellulose, vitamin E polyethylene glycol succinate, sodium stearyl fumarate and colloidal silicon dioxide.

12 CLINICAL PHARMACOLOGY

12.1 Mechanism of Action

Ubrogapant is a calcitonin gene-related peptide receptor antagonist.

12.2 Pharmacodynamics

Cardiac Electrophysiology

At a dose 2 times the maximum recommended daily dose, UBRELVY does not prolong the QT interval to any clinically relevant extent.

12.3 Pharmacokinetics

Absorption

Following oral administration of UBRELVY, ubrogapant is absorbed with peak plasma concentrations at approximately 1.5 hours. Ubrogapant displays dose-proportional pharmacokinetics within the recommended dose range [see *Dosage and Administration (2.1)*].

Effect of Food

When UBRELVY was administered with a high-fat meal, the time to maximum ubrogapant plasma concentration was delayed by 2 hours and resulted in a 22% reduction in C_{max} with no change in AUC. UBRELVY was administered without regard to food in clinical efficacy studies [see *Dosage and Administration (2.1)*].

Distribution

Plasma protein binding of ubrogapant is 87% in vitro. The mean apparent central volume of distribution of ubrogapant (V/F) after single dose oral administration is approximately 350 L.

Elimination

Metabolism

Ubrogepant is eliminated mainly through metabolism, primarily by CYP3A4. The parent compound (ubrogepant), and 2 glucuronide conjugate metabolites were the most prevalent circulating components in human plasma. The glucuronide metabolites are not expected to contribute to the pharmacological activity of ubrogepant since they were reported as about 6000-fold less potent in the CGRP receptor binding assay.

Excretion

The elimination half-life of ubrogepant is approximately 5-7 hours. The mean apparent oral clearance (CL/F) of ubrogepant is approximately 87 L/hr. Ubrogepant is excreted mostly via the biliary/fecal route, while the renal route is a minor route of elimination. Following single oral dose administration of [¹⁴C]-ubrogepant to healthy male subjects, 42% and 6% of the dose was recovered as unchanged ubrogepant in feces and urine, respectively.

Specific Populations

Patients with Renal Impairment

Population pharmacokinetic analysis based on pooled data from clinical studies was used to evaluate the effect of renal impairment characterized based on estimated creatinine clearance (CL_{cr}) using the Cockcroft-Gault (C-G) equation. Renal impairment did not reveal a significant difference in the pharmacokinetics of ubrogepant in patients with mild or moderate renal impairment (CL_{cr} 30-89 mL/min) relative to those with normal renal function (CL_{cr} >90 mL/min). Patients with severe renal impairment or ESRD (eGFR <30 mL/min) have not been studied. Dose adjustment in patients with severe renal impairment (CL_{cr} 15-29 mL/min) is recommended based on ADME information and a conservative assumption that severe renal impairment is unlikely to cause more than a two-fold increase in exposure of ubrogepant [see *Dosage and Administration (2.2)*]. No dosing recommendations can be made for patients with ESRD (CL_{cr}<15 mL/min).

Patients with Hepatic Impairment

In patients with pre-existing mild (Child-Pugh Class A), moderate (Child-Pugh Class B), or severe hepatic impairment (Child-Pugh Class C), ubrogepant exposure was increased by 7%, 50%, and 115%, respectively. Patients with severe hepatic impairment require dose adjustments [see *Dosage and Administration (2.2)*].

Other Specific Populations

Based on a population pharmacokinetic analysis, age, sex, race, and body weight did not have a significant effect on the pharmacokinetics (C_{max} and AUC) of ubrogepant. Therefore, no dose adjustments are warranted based on these factors.

Drug Interactions

In Vitro Studies

Enzymes

Ubrogepant is not an inhibitor of CYP1A2, 2B6, or 3A4. Ubrogepant is a weak inhibitor of CYP2C8, 2C9, 2D6, 2C19, MAO-A, and UGT1A1. The in vitro inhibition potential is not expected to be clinically significant. Ubrogepant is not an inducer of CYP1A2, 2B6, or 3A4 at clinically relevant concentrations.

Transporters

Ubrogepant is a substrate of BCRP and P-gp transporters in-vitro; therefore, use of inhibitors of BCRP and/or P-gp may increase the exposure of ubrogepant. Dose adjustment for concomitant use of UBRELVY with inhibitors of BCRP and/or P-gp is recommended based on ADME and clinical interaction studies with CYP3A4/P-gp inhibitors that show the highest predicted potential increase in exposure of ubrogepant is not expected to be more than two-fold [see *Dosage and Administration (2.2)* and *Drug Interactions (7.3)*].

Ubrogepant is a weak substrate of OATP1B1, OATP1B3, and OAT1, but not a substrate of OAT3. It is not an inhibitor of P-gp, BCRP, BSEP, MRP3, MRP4, OAT1, OAT3, or NTCP transporters, but is a weak inhibitor

of OATP1B1, OATP1B3, and OCT2 transporters. Dose adjustments are needed only for P-gp, or BCRP inhibitors. No clinical drug interactions are expected for UBRELVY with other transporters.

In Vivo Studies

CYP3A4 Inhibitors [*see Dosage and Administration (2.2), Contraindications (4), and Drug Interactions (7.1)*]:

Co-administration of UBRELVY with ketoconazole, a strong CYP3A4 inhibitor, resulted in a 9.7-fold and 5.3-fold increase in AUC_{inf} and C_{max} of ubrogepant, respectively. Co-administration of UBRELVY with verapamil, a moderate CYP3A4 inhibitor, resulted in about 3.5-fold and 2.8-fold increase in AUC_{inf} and C_{max} of ubrogepant, respectively. No dedicated drug interaction study was conducted to assess concomitant use with weak CYP3A4 inhibitors. The conservative prediction of the maximal potential increase in ubrogepant exposure with weak CYP3A4 inhibitors is not expected to be more than 2-fold.

CYP3A4 Inducers [*see Dosage and Administration (2.2) and Drug Interactions (7.2)*]:

Co-administration of UBRELVY with rifampin, a strong CYP3A4 inducer, resulted in an 80% reduction in ubrogepant exposure. No dedicated drug interaction studies were conducted to assess concomitant use with weak or moderate CYP3A4 inducers. Dose adjustment for concomitant use of UBRELVY with weak or moderate CYP3A4 inducers is recommended based on a conservative prediction of 50% reduction in exposure of ubrogepant.

Other Drug-Drug Interaction Evaluations:

No significant pharmacokinetic interactions were observed for either ubrogepant or co-administered drugs when UBRELVY was administered with oral contraceptives (containing norgestimate and ethinyl estradiol), acetaminophen, naproxen, sumatriptan, or esomeprazole (a proton pump inhibitor).

13 NONCLINICAL TOXICOLOGY

13.1 Carcinogenesis, Mutagenesis, Impairment of Fertility

Carcinogenicity

Two-year oral carcinogenicity studies of ubrogepant were conducted in mice (0, 5, 15, or 50 mg/kg/day) and rats (0, 10, 30, or 100 mg/kg in males; 0, 10, 30, or 150 mg/kg in females). There was no evidence of drug-related tumors in either species. The highest dose tested in mice is similar to the maximum recommended human dose (200 mg/day) on a body surface area (mg/m²) basis. Plasma exposure (AUC) at the highest dose tested in rats is approximately 25 times that in humans at the maximum recommended human dose (MRHD) of 200 mg/day.

Mutagenicity

Ubrogepant was negative in in vitro (Ames, chromosomal aberration test in Chinese Hamster Ovary cells) and in vivo (rat bone marrow micronucleus) assays.

Impairment of Fertility

Oral administration of ubrogepant (0, 20, 80, or 160 mg/kg/day) to male and female rats (mated with drug-naïve females and males, respectively) resulted in no adverse effects on fertility or reproductive performance. Plasma exposures (AUC) at the highest dose tested are approximately 30 times that in humans at the MRHD.

14 CLINICAL STUDIES

The efficacy of UBRELVY for the acute treatment of migraine was demonstrated in two randomized, double-blind, placebo-controlled trials [Study 1 (NCT02828020) and Study 2 (NCT02867709)]. Study 1 randomized UBR_50 100_API_July22

patients to placebo (n=559) or UBRELVY 50 mg (n=556) or 100 mg (n=557) and Study 2 randomized patients to placebo (n=563) or UBRELVY 50 mg (n=562). In all studies, patients were instructed to treat a migraine with moderate to severe headache pain intensity. A second dose of study medication (UBRELVY or placebo), or the patient's usual acute treatment for migraine, was allowed between 2 to 48 hours after the initial treatment for a non-responding or recurrent migraine headache. Up to 23% of patients were taking preventive medications for migraine at baseline. None of these patients were on concomitant preventive medication that act on the CGRP pathway.

The primary efficacy analyses were conducted in patients who treated a migraine with moderate to severe pain. The efficacy of UBRELVY was established by an effect on pain freedom at 2 hours post-dose and most bothersome symptom (MBS) freedom at 2 hours post-dose, compared to placebo, for Studies 1 and 2. Pain freedom was defined as a reduction of moderate or severe headache pain to no pain, and MBS freedom was defined as the absence of the self-identified MBS (i.e., photophobia, phonophobia, or nausea). Among patients who selected an MBS, the most commonly selected was photophobia (56%), followed by phonophobia (24%), and nausea (19%).

In both studies, the percentage of patients achieving headache pain freedom and MBS freedom 2 hours post-dose was significantly greater among patients receiving UBRELVY compared to those receiving placebo (see Table 3). Table 3 also presents the results of the analyses of the percentage of patients achieving pain relief at 2 hours (defined as a reduction in migraine pain from moderate or severe to mild or none) post-dose and the percentage of patients achieving sustained pain freedom between 2 to 24 hours post-dose.

The incidence of photophobia and phonophobia was reduced following administration of UBRELVY at both doses (50 mg and 100 mg) as compared to placebo.

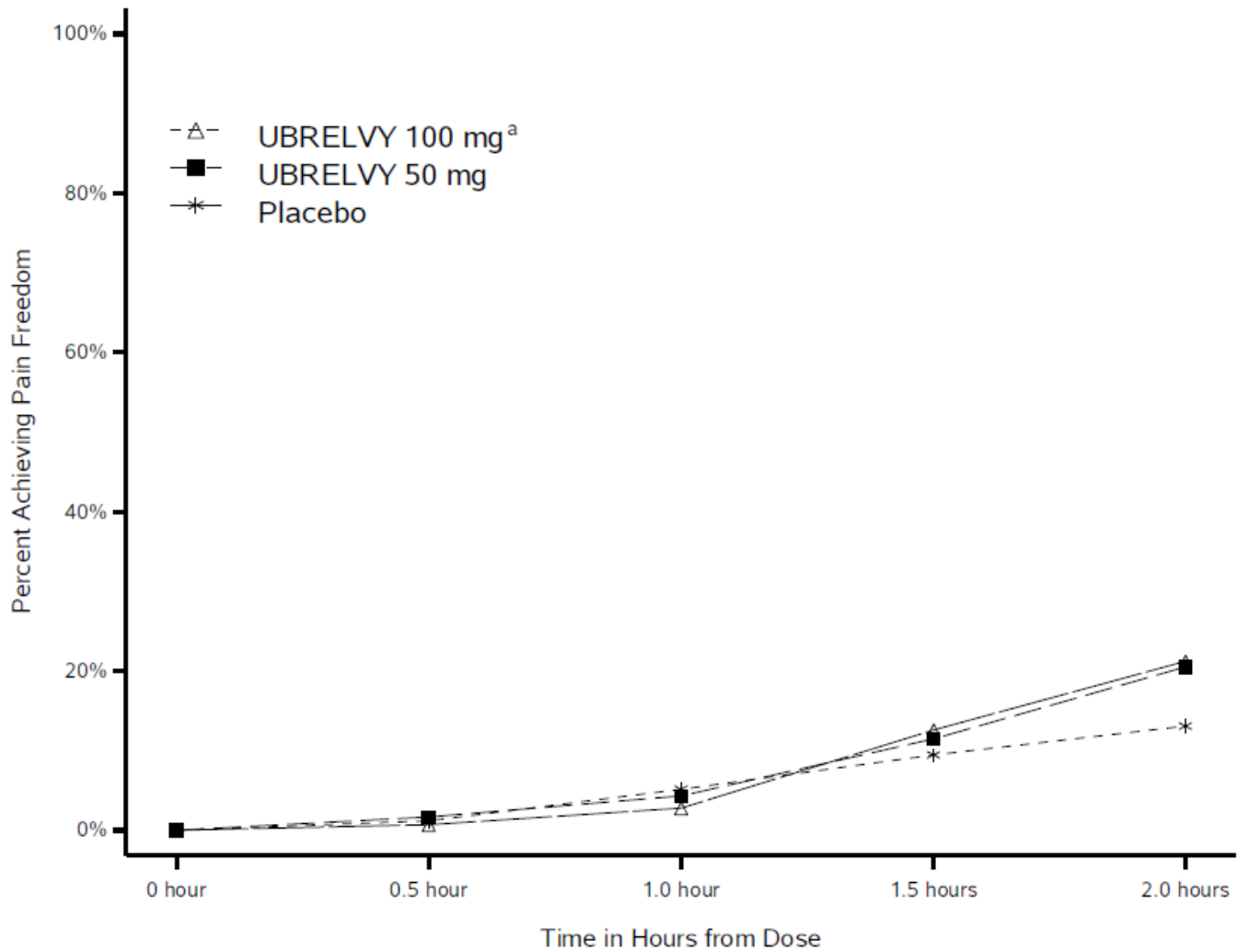
Table 3: Migraine Efficacy Endpoints for Study 1 and Study 2

	Study 1			Study 2	
	UBRELVY 50 mg	UBRELVY 100 mg	Placebo	UBRELVY 50 mg	Placebo
Pain Free at 2 hours					
N	422	448	456	464	456
% Responders	19.2	21.2	11.8	21.8	14.3
Difference from placebo (%)	7.4	9.4		7.5	
p value	0.002	<0.001		0.007	
Most Bothersome Symptom Free at 2 hours					
N	420	448	454	463	456
% Responders	38.6	37.7	27.8	38.9	27.4
Difference from placebo (%)	10.8	9.9		11.5	
p value	<0.001	<0.001		<0.001	
Pain Relief at 2 hours					
N	422	448	456	464	456
% Responders	60.7	61.4	49.1	62.7	48.2
p value	<0.001	<0.001		<0.001	
Sustained Pain Freedom 2-24 hours					
N	418	441	452	457	451
% Responders	12.7	15.4	8.6	14.4	8.2
p value	*NS	0.002		0.005	

* Not statistically significant (NS)

Figure 1 presents the percentage of patients achieving migraine pain freedom within 2 hours following treatment in Studies 1 and 2.

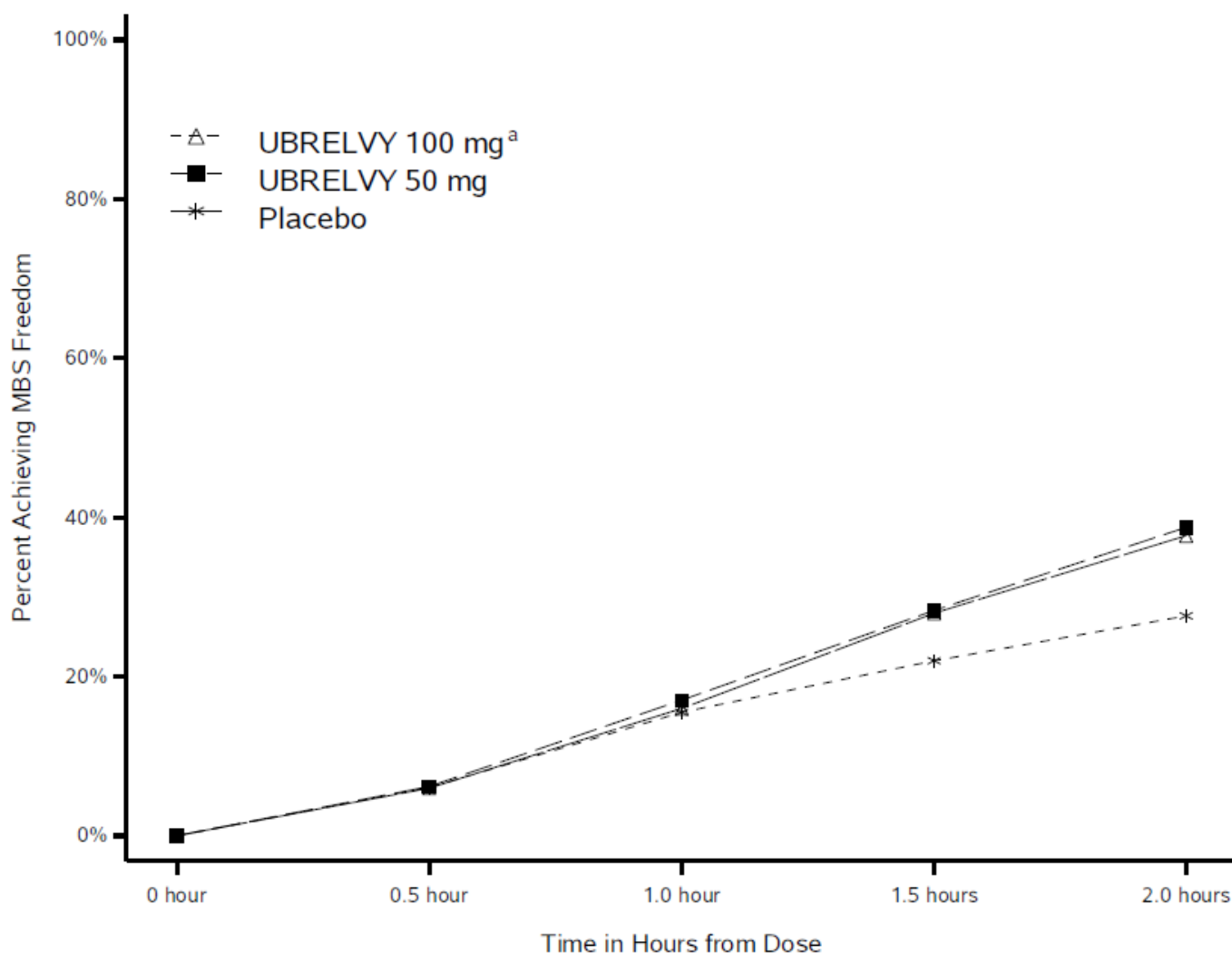
Figure 1: Percentage of Patients Achieving Pain Freedom within 2 Hours in Pooled Studies 1 and 2



^a The 100 mg arm was only included in Study 1.

Figure 2 presents the percentage of patients achieving MBS freedom within 2 hours in Studies 1 and 2.

Figure 2: Percentage of Patients Achieving MBS Freedom within 2 Hours in Pooled Studies 1 and 2



^a The 100 mg arm was only included in Study 1.

16 HOW SUPPLIED/STORAGE AND HANDLING

16.1 How Supplied

UBRELVY 50 mg is supplied as white to off-white, capsule-shaped, biconvex tablet debossed with “U50” on one side in unit-dose packets (each packet contains 1 tablet):

- Box of 6, 8, 10, 12, 16, 30 Packets

UBRELVY 100 mg is supplied as white to off-white capsule-shaped, biconvex tablet debossed with “U100” on one side in unit-dose packets (each packet contains 1 tablet):

- Box of 6, 8, 10, 12, 16, 30 Packets

Not all pack sizes may be marketed.

16.2 Storage and Handling

Store at below 25°C.

The expiry date of the product is indicated on the packaging materials

17. Manufacturer

Forest Laboratories Ireland Ltd.,
Dublin, Ireland

18. License Holder

Abbvie Biopharmaceuticals Ltd., 4 Haharash st., Hod Hasharon

19. Registration Number

169-77-37037-99

169-78-37038-99

Revised on July 2022