



Ocrevus[®]

Ocrelizumab Concentrate for solution for infusion

NAME OF THE MEDICINAL PRODUCT

Ocrevus

QUALITATIVE AND QUANTITATIVE COMPOSITION

Each vial contains 300 mg of ocrelizumab in 10 mL at a concentration of 30 mg/mL.

Ocrelizumab is a recombinant humanised anti-human CD20 monoclonal antibody produced in Chinese Hamster Ovary cell lines by recombinant DNA technology.

For the full list of excipients, see section 11.

PHARMACEUTICAL FORM

Concentrate for solution for infusion.

Clear to slightly opalescent, and colourless to pale brown solution.

CLINICAL PARTICULARS

1 INDICATIONS AND USAGE

Ocrevus is indicated for the treatment of adult patients with relapsing or primary progressive forms of multiple sclerosis.

2 DOSAGE AND ADMINISTRATION

2.1 Assessments Prior to First Dose of Ocrevus

Hepatitis B Virus Screening

Prior to initiating Ocrevus, perform Hepatitis B virus (HBV) screening. Ocrevus is contraindicated in patients with active HBV confirmed by positive results for HBsAg and anti-HBV tests. For patients who are negative for surface antigen [HBsAg] and positive for HB core antibody [HBcAb+] or are carriers of HBV [HBsAg+], consult liver disease experts before starting and during treatment [see *Warnings and Precautions (5.2)*].

Vaccinations

Because vaccination with live-attenuated or live vaccines is not recommended during treatment and after discontinuation until B-cell repletion, administer all immunizations according to immunization guidelines at least 4 weeks prior to initiation of Ocrevus for live or live-attenuated vaccines and, whenever possible, at least 2 weeks prior to initiation of Ocrevus for non-live vaccines [see *Warnings and Precautions (5.2)* and *Clinical Pharmacology (12.2)*].

2.2 Preparation Before Every Infusion

Infection Assessment

Prior to every infusion of Ocrevus, determine whether there is an active infection. In case of active infection, delay infusion of Ocrevus until the infection resolves [see *Warnings and Precautions (5.2)*].

Recommended Premedication

Pre-medicate with 100 mg of methylprednisolone (or an equivalent corticosteroid) administered intravenously approximately 30 minutes prior to each Ocrevus infusion to reduce the frequency and severity of infusion reactions [see *Warnings and Precautions (5.1)*]. Pre-medicate with an antihistamine (e.g., diphenhydramine) approximately 30-60 minutes prior to each Ocrevus infusion to further reduce the frequency and severity of infusion reactions.

The addition of an antipyretic (e.g., acetaminophen) may also be considered.

2.3 Recommended Dosage and Dose Administration

Administer Ocrevus under the close supervision of an experienced healthcare professional with access to appropriate medical support to manage severe reactions such as serious infusion reactions.

- Initial dose: 300 mg intravenous infusion, followed two weeks later by a second 300 mg intravenous infusion.
- Subsequent doses: single 600 mg intravenous infusion every 6 months.
- Observe the patient for at least one hour after the completion of the infusion [see *Warnings and Precautions (5.1)*].

Table 1 Recommended Dose, Infusion Rate, and Infusion Duration for RMS and PPMS

		Amount and Volume ¹	Infusion Rate and Duration ³
Initial Dose (two infusions)	Infusion 1	300 mg in 250 mL	<ul style="list-style-type: none">• Start at 30 mL per hour• Increase by 30 mL per hour every 30 minutes• Maximum: 180 mL per hour• Duration: 2.5 hours or longer
	Infusion 2 (2 weeks later)	300 mg in 250 mL	
Subsequent Doses (one infusion)	One infusion every 6 months ²	600 mg in 500 mL	<ul style="list-style-type: none">• Start at 40 mL per hour• Increase by 40 mL per hour every 30 minutes• Maximum: 200 mL per hour• Duration: 3.5 hours or longer

¹ Solutions of Ocrevus for intravenous infusion are prepared by dilution of the drug product into an infusion bag containing 0.9% Sodium Chloride Injection, to a final drug concentration of approximately 1.2 mg/mL.

² Administer the first Subsequent Dose 6 months after Infusion 1 of the Initial Dose.

³ Infusion time may take longer if the infusion is interrupted or slowed [see *Dosage and Administration (2.5)*].

2.4 Delayed or Missed Doses

If a planned infusion of Ocrevus is missed, administer Ocrevus as soon as possible; do not wait until the next scheduled dose. Reset the dose schedule to administer the next sequential dose 6 months after the missed dose is administered. Doses of Ocrevus must be separated by at least 5 months [see *Dosage and Administration (2.3)*].

2.5 Dose Modifications Because of Infusion Reactions

Dose modifications in response to infusion reactions depends on the severity.

Life-threatening Infusion Reactions

Immediately stop and permanently discontinue Ocrevus if there are signs of a life-threatening or disabling infusion reaction [see *Warnings and Precautions (5.1)*]. Provide appropriate supportive treatment.

Severe Infusion Reactions

Immediately interrupt the infusion and administer appropriate supportive treatment, as necessary [see *Warnings and Precautions (5.1)*]. Restart the infusion only after all symptoms have resolved. When restarting, begin at half of the infusion rate at the time of onset of the infusion reaction [see *Dosage and Administration (2.2)*]. If this rate is tolerated, increase the rate as described in Table 1. This change in rate will increase the total duration of the infusion but not the total dose.

Mild to Moderate Infusion Reactions

Reduce the infusion rate to half the rate at the onset of the infusion reaction and maintain the reduced rate for at least 30 minutes [see *Warnings and Precautions (5.1)*]. If this rate is tolerated, increase the rate as described in Table 1. This change in rate will increase the total duration of the infusion but not the total dose.

2.6 Preparation and Storage of the Dilute Solution for Infusion

Preparation

Ocrevus must be prepared by a healthcare professional using aseptic technique. A sterile needle and syringe should be used to prepare the diluted infusion solution.

Visually inspect for particulate matter and discoloration prior to administration. Do not use the solution if discolored or if the solution contains discrete foreign particulate matter. Do not shake.

Withdraw intended dose and further dilute into an infusion bag containing 0.9% Sodium Chloride Injection, to a final drug concentration of approximately 1.2 mg/mL.

- Withdraw 10 mL (300 mg) of Ocrevus and inject into 250 mL
- Withdraw 20 mL (600 mg) of Ocrevus and inject into 500 mL

Do not use other diluents to dilute Ocrevus since their use has not been tested. The product contains no preservative and is intended for single use only.

Storage of Infusion Solution

Prior to the start of the intravenous infusion, the content of the infusion bag should be at room temperature.

Use the prepared infusion solution immediately. If not used immediately, chemical and physical in use stability has been demonstrated for 24 hours (in the refrigerator) at 2°C–8°C and 8 hours at room temperature (up to 25°C), which includes infusion time. In the event an intravenous infusion cannot be completed the same day, discard the remaining solution.

From microbiological point of view, the prepared infusion should be used immediately. If not used immediately, in use storage times and conditions prior to use are the responsibility of the user and would normally not be longer than 24 hours at 2°C–8°C and 8 hours at room temperature, unless dilution is undertaken in controlled and validated aseptic conditions.

No incompatibilities between Ocrevus and polyvinyl chloride (PVC) or polyolefin (PO) bags and intravenous (IV) administration sets have been observed.

Administration

Administer the diluted infusion solution through a dedicated line using an infusion set with a 0.2 or 0.22 micron in-line filter.

3 DOSAGE FORMS AND STRENGTHS

Injection: 300 mg/10 mL (30 mg/mL) clear or slightly opalescent, and colorless to pale brown solution in a single-dose vial.

4 CONTRAINDICATIONS

Ocrevus is contraindicated in patients with:

- Hypersensitivity to the active substance or to any of the excipients listed in section 11.
- Active HBV infection [*see Dosage and Administration (2.6) and Warnings and Precautions (5.2)*]
- A history of life-threatening infusion reaction to Ocrevus [*see Warnings and Precautions (5.1)*]

5 WARNINGS AND PRECAUTIONS

5.1 Infusion Reactions

Ocrevus can cause infusion reactions, which can include pruritus, rash, urticaria, erythema, bronchospasm, throat irritation, oropharyngeal pain, dyspnea, pharyngeal or laryngeal edema, flushing, hypotension, pyrexia, fatigue, headache, dizziness, nausea, tachycardia, and anaphylaxis. In multiple sclerosis (MS) clinical trials, the incidence of infusion reactions in Ocrevus-treated patients [who received methylprednisolone (or an equivalent steroid) and possibly other pre-medication to reduce the risk of infusion reactions prior to each infusion] was 34 to 40%, with the highest incidence with the first infusion. There were no fatal infusion reactions, but 0.3% of Ocrevus-treated MS patients experienced infusion reactions that were serious, some requiring hospitalization.

Observe patients treated with Ocrevus for infusion reactions during the infusion and for at least one hour after completion of the infusion. Inform patients that infusion reactions can occur up to 24 hours after the infusion.

Reducing the Risk of Infusion Reactions and Managing Infusion Reactions

Administer pre-medication- corticosteroid (e.g., methylprednisolone or an equivalent corticosteroid) and an antihistamine, to reduce the frequency and severity of infusion reactions. The addition of an antipyretic (e.g., acetaminophen) may also be considered [*see Dosage and Administration (2.3)*].

Management recommendations for infusion reactions depend on the type and severity of the reaction [*see Dosage and Administration (2.5)*]. For life-threatening infusion reactions, immediately and permanently stop Ocrevus and administer appropriate supportive treatment. For less severe infusion reactions, management may involve temporarily stopping the infusion, reducing the infusion rate, and/or administering symptomatic treatment.

5.2 Infections

A higher proportion of Ocrevus-treated patients experienced infections compared to patients taking Rebif or placebo. In RMS trials, 58% of Ocrevus-treated patients experienced one or more infections compared to 52% of Rebif-treated patients. In the PPMS trial, 70% of Ocrevus-treated patients experienced one or more infections compared to 68% of patients on placebo. Ocrevus increased the risk for upper respiratory tract infections, lower respiratory tract infections, skin infections, and herpes-related infections [*see Adverse Reactions (6.1)*]. Ocrevus was not associated with an increased risk of serious infections in MS patients. Delay Ocrevus administration in patients with an active infection until the infection is resolved.

Respiratory Tract Infections

A higher proportion of Ocrevus-treated patients experienced respiratory tract infections compared to patients taking Rebif or placebo. In RMS trials, 40% of Ocrevus-treated patients experienced upper respiratory tract infections compared to 33% of Rebif-treated patients, and 8% of Ocrevus-treated patients experienced lower respiratory tract infections compared to 5% of Rebif-treated patients. In the PPMS trial, 49% of Ocrevus-treated patients experienced upper respiratory tract infections compared to 43% of patients on placebo and 10% of Ocrevus-treated patients experienced lower respiratory tract infections compared to 9% of patients on placebo.

The infections were predominantly mild to moderate and consisted mostly of upper respiratory tract infections and bronchitis.

Herpes

In active-controlled (RMS) clinical trials, herpes infections were reported more frequently in Ocrevus-treated patients than in Rebif-treated patients, including herpes zoster (2.1% vs. 1.0%), herpes simplex (0.7% vs. 0.1%), oral herpes (3.0% vs. 2.2%), genital herpes (0.1% vs. 0%), and herpes virus infection (0.1% vs. 0%). Infections were predominantly mild to moderate in severity.

In the placebo-controlled (PPMS) clinical trial, oral herpes was reported more frequently in the Ocrevus-treated patients than in the patients on placebo (2.7% vs 0.8%).

Serious cases of infections caused by herpes simplex virus and varicella zoster virus, including central nervous system infections (encephalitis and meningitis), intraocular infections, and disseminated skin and soft tissue infections, have been reported in the postmarketing setting in multiple sclerosis patients receiving Ocrevus. Serious herpes virus infections may occur at any time during treatment with Ocrevus. Some cases were life-threatening.

If serious herpes infections occur, Ocrevus should be discontinued or withheld until the infection has resolved, and appropriate treatment should be administered.

Hepatitis B Virus (HBV) Reactivation

Hepatitis B reactivation has been reported in MS patients treated with Ocrevus in the postmarketing setting. Fulminant hepatitis, hepatic failure, and death caused by HBV reactivation have occurred in patients treated with anti-CD20 antibodies. Perform HBV screening in all patients before initiation of treatment with Ocrevus. Do not administer Ocrevus to patients with active HBV confirmed by positive results for HBsAg and anti-HB tests. For patients who are negative for surface antigen [HBsAg] and positive for HB core antibody [HBcAb+] or are carriers of HBV [HBsAg+], consult liver disease experts before starting and during treatment.

Possible Increased Risk of Immunosuppressant Effects with Other Immunosuppressants

When initiating Ocrevus after an immunosuppressive therapy or initiating an immunosuppressive therapy after Ocrevus, consider the potential for increased immunosuppressive effects [*see Drug Interactions (7.1) and Clinical Pharmacology (12.1, 12.2)*]. Ocrevus has not been studied in combination with other MS therapies.

Vaccinations

Administer all immunizations according to immunization guidelines at least 4 weeks prior to initiation of Ocrevus for live or live-attenuated vaccines and, whenever possible, at least 2 weeks prior to initiation of Ocrevus for non-live vaccines.

Ocrevus may interfere with the effectiveness of non-live vaccines [*see Drug Interactions (7.2)*].

The safety of immunization with live or live-attenuated vaccines following Ocrevus therapy has not been studied, and vaccination with live-attenuated or live vaccines is not recommended during treatment and until B-cell repletion [*see Clinical Pharmacology (12.2)*].

Vaccination of Infants Born to Mothers Treated with Ocrevus During Pregnancy

In infants of mothers exposed to Ocrevus during pregnancy, do not administer live or live-attenuated vaccines before confirming the recovery of B-cell counts as measured by CD19⁺ B-cells. Depletion of B-cells in these infants may increase the risks from live or live-attenuated vaccines.

You may administer non-live vaccines, as indicated, prior to recovery from B-cell depletion, but should consider assessing vaccine immune responses, including consultation with a qualified specialist, to assess whether a protective immune response was mounted [*see Use in Specific Populations (8.1)*].

5.3 Progressive Multifocal Leukoencephalopathy (PML)

Cases of progressive multifocal leukoencephalopathy (PML) have been reported in patients with MS treated with Ocrevus in the postmarketing setting. PML is an opportunistic viral infection of the brain caused by the JC virus (JCV) that typically only occurs in patients who are immunocompromised, and that usually leads to death or severe disability. PML has occurred in Ocrevus-treated patients who had not been treated previously with natalizumab (which has a known association with PML), were not taking any immunosuppressive or immunomodulatory medications associated with the risk of PML prior to or concomitantly with Ocrevus, and did not have any known ongoing systemic medical conditions resulting in compromised immune system function.

JCV infection resulting in PML has also been observed in patients treated with other anti-CD20 antibodies and other MS therapies.

At the first sign or symptom suggestive of PML, withhold Ocrevus and perform an appropriate diagnostic evaluation. Typical symptoms associated with PML are diverse, progress over days to weeks, and include progressive weakness on one side of the body or clumsiness of limbs, disturbance of vision, and changes in thinking, memory, and orientation leading to confusion and personality changes.

MRI findings may be apparent before clinical signs or symptoms. Cases of PML, diagnosed based on MRI findings and the detection of JCV DNA in the cerebrospinal fluid in the absence of clinical signs or symptoms specific to PML, have been reported in patients treated with other MS medications associated with PML. Many of these patients subsequently became symptomatic with PML. Therefore, monitoring with MRI for signs that may be consistent with PML may be useful, and any suspicious findings should lead to further investigation to allow for an early diagnosis of PML, if present. Following discontinuation of another MS medication associated with PML, lower PML-related mortality and morbidity have been reported in patients who were initially asymptomatic at diagnosis compared to patients who had characteristic clinical signs and symptoms at diagnosis.

It is not known whether these differences are due to early detection and discontinuation of MS treatment or due to differences in disease in these patients.

If PML is confirmed, treatment with Ocrevus should be discontinued.

5.4 Malignancies

An increased risk of malignancy with Ocrevus may exist. In controlled trials, malignancies, including breast cancer, occurred more frequently in Ocrevus-treated patients. Breast cancer occurred in 6 of 781 females treated with Ocrevus and none of 668 females treated with Rebif or placebo. Patients should follow standard breast cancer screening guidelines.

5.5 Immune-Mediated Colitis

Immune-mediated colitis, which can present as a severe and acute-onset form of colitis, has been reported in patients receiving Ocrevus in the postmarketing setting. Some cases of colitis were serious, requiring hospitalization, with a few patients requiring surgical intervention. Systemic corticosteroids were required in many of these patients. The time from treatment initiation to onset of symptoms in these cases ranged from a few weeks to years. Monitor patients for immune-mediated colitis during Ocrevus treatment, and evaluate promptly if signs and symptoms that may indicate immune-mediated colitis, such as new or persistent diarrhea or other gastrointestinal signs and symptoms, occur.

6 ADVERSE REACTIONS

The following serious adverse reactions are discussed in greater detail in other sections of the labeling:

- Infusion Reactions [see *Warnings and Precautions (5.1)*]
- Infections [see *Warnings and Precautions (5.2)*]
- Progressive Multifocal Leukoencephalopathy [see *Warnings and Precautions (5.3)*]
- Malignancies [see *Warnings and Precautions (5.4)*]

- Immune-Mediated Colitis [see Warnings and Precautions (5.5)]

6.1 Clinical Trials Experience

Because clinical trials are conducted under widely varying conditions, adverse reactions rates observed in the clinical trials of a drug cannot be directly compared to rates in the clinical trials of another drug and may not reflect the rates observed in clinical practice.

The safety of Ocrevus has been evaluated in 1311 patients across MS clinical studies, which included 825 patients in active-controlled clinical trials in patients with relapsing forms of MS (RMS) and 486 patients in a placebo-controlled study in patients with primary progressive MS (PPMS).

Adverse Reactions in Patients with Relapsing Forms of MS

In active-controlled clinical trials (Study 1 and Study 2), 825 patients with RMS received Ocrevus 600 mg intravenously every 24 weeks (initial treatment was given as two separate 300 mg infusions at Weeks 0 and 2) [see Clinical Studies (14.1)]. The overall exposure in the 96-week controlled treatment periods was 1448 patient-years.

The most common adverse reactions in RMS trials (incidence $\geq 10\%$) were upper respiratory tract infections and infusion reactions. Table 2 summarizes the adverse reactions that occurred in RMS trials (Study 1 and Study 2).

Table 2 Adverse Reactions in Adult Patients with RMS with an Incidence of at least 5% for Ocrevus and Higher than Rebif

Adverse Reactions	Studies 1 and 2	
	Ocrevus 600 mg IV Every 24 Weeks ¹ (n=825) %	Rebif 44 mcg SQ 3 Times per Week (n=826) %
Upper respiratory tract infections	40	33
Infusion reactions	34	10
Depression	8	7
Lower respiratory tract infections	8	5
Back pain	6	5
Herpes virus- associated infections	6	4
Pain in extremity	5	4

¹ The first dose was given as two separate 300 mg infusions at Weeks 0 and 2.

Adverse Reactions in Patients with Primary Progressive MS

In a placebo-controlled clinical trial (Study 3), a total of 486 patients with PPMS received one course of Ocrevus (600 mg of Ocrevus administered as two 300 mg infusions two weeks apart) given intravenously every 24 weeks and 239 patients received placebo intravenously [see Clinical Studies (14.2)]. The overall exposure in the controlled treatment period was 1416 patient-years, with median treatment duration of 3 years.

The most common adverse reactions in the PPMS trial (incidence $\geq 10\%$) were upper respiratory tract infections, infusion reactions, skin infections, and lower respiratory tract infections. Table 3 summarizes the adverse reactions that occurred in the PPMS trial (Study 3).

Table 3 Adverse Reactions in Adult Patients with PPMS with an Incidence of at least 5% for Ocrevus and Higher than Placebo

Adverse Reactions	Study 3	
	Ocrevus 600 mg IV Every 24 Weeks ¹ (n=486) %	Placebo (n=239) %
Upper respiratory tract infections	49	43
Infusion reactions	40	26
Skin infections	14	11
Lower respiratory tract infections	10	9
Cough	7	3
Diarrhea	6	5
Edema peripheral	6	5
Herpes virus associated infections	5	4

¹One dose of Ocrevus (600 mg administered as two 300 mg infusions two weeks apart)

Laboratory Abnormalities

Decreased Immunoglobulins

Ocrevus decreased total immunoglobulins with the greatest decline seen in IgM levels. In MS clinical trials, there was no apparent association between immunoglobulin decrease and risk for serious infections.

In the active-controlled (RMS) trials (Study 1 and Study 2), the proportion of patients at baseline reporting IgG, IgA, and IgM below the lower limit of normal (LLN) in Ocrevus-treated patients was 0.5%, 1.5%, and 0.1%, respectively. Following treatment, the proportion of Ocrevus-treated patients reporting IgG, IgA, and IgM below the LLN at 96 weeks was 1.5%, 2.4%, and 16.5%, respectively.

In the placebo-controlled (PPMS) trial (Study 3), the proportion of patients at baseline reporting IgG, IgA, and IgM below the LLN in Ocrevus-treated patients was 0.0%, 0.2%, and 0.2%, respectively. Following treatment, the proportion of Ocrevus-treated patients reporting IgG, IgA, and IgM below the LLN at 120 weeks was 1.1%, 0.5%, and 15.5%, respectively.

Decreased Neutrophil Levels

In the PPMS clinical trial (Study 3), decreased neutrophil counts occurred in 13% of Ocrevus-treated patients compared to 10% in placebo patients. The majority of the decreased neutrophil counts were only observed once for a given patient treated with Ocrevus and were between LLN - $1.5 \times 10^9/L$ and $1.0 \times 10^9/L$. Overall, 1% of the patients in the Ocrevus group had neutrophil counts less than $1.0 \times 10^9/L$ and these were not associated with an infection.

6.2 Immunogenicity

As with all therapeutic proteins, there is potential for immunogenicity. Immunogenicity data are highly dependent on the sensitivity and specificity of the test methods used. Additionally, the observed incidence of a positive result in a test method may be influenced by several factors, including sample handling, timing of sample collection, drug interference, concomitant medication, and the underlying disease. Therefore, comparison of the incidence of antibodies to Ocrevus with the incidence of antibodies to other products may be misleading.

Patients in MS trials (Study 1, Study 2, and Study 3) were tested at multiple time points (baseline and every 6 months post-treatment for the duration of the trial) for anti-drug antibodies (ADAs). Out of 1311 patients treated

with Ocrevus, 12 (~1%) tested positive for ADAs, of which 2 patients tested positive for neutralizing antibodies. These data are not adequate to assess the impact of ADAs on the safety and efficacy of Ocrevus.

6.3 Postmarketing Experience

The following adverse reactions have been identified during postapproval use of Ocrevus. Because these reactions are reported voluntarily from a population of uncertain size, it is not always possible to reliably estimate their frequency or establish a causal relationship to drug exposure.

Gastrointestinal Disorders: Immune-mediated colitis [*see Warnings and Precautions (5.5)*]

Infections and Infestations: Serious herpes infections [*see Warnings and Precautions (5.2)*] and progressive multifocal leukoencephalopathy [*see Warnings and Precautions (5.3)*].

Reporting of suspected adverse reactions

Reporting suspected adverse reactions after authorisation of the medicinal product is important. It allows continued monitoring of the benefit/risk balance of the medicinal product. Any suspected adverse events should be reported to the Ministry of Health according to the National Regulation by using an online form: <https://sideeffects.health.gov.il>

7 DRUG INTERACTIONS

7.1 Immunosuppressive or Immune-Modulating Therapies

The concomitant use of Ocrevus and other immune-modulating or immunosuppressive therapies, including immunosuppressant doses of corticosteroids, is expected to increase the risk of immunosuppression. Consider the risk of additive immune system effects when coadministering immunosuppressive therapies with Ocrevus. When switching from drugs with prolonged immune effects, such as daclizumab, fingolimod, natalizumab, teriflunomide, or mitoxantrone, consider the duration and mode of action of these drugs because of additive immunosuppressive effects when initiating Ocrevus [*see Warnings and Precautions (5.2)*].

7.2 Vaccinations

A Phase 3b randomized, open-label study examined the concomitant use of Ocrevus and several non-live vaccines in adults 18-55 years of age with relapsing forms of MS (68 subjects undergoing treatment with Ocrevus at the time of vaccination and 34 subjects not undergoing treatment with Ocrevus at the time of vaccination). Concomitant exposure to Ocrevus attenuated antibody responses to tetanus toxoid-containing vaccine, pneumococcal polysaccharide, pneumococcal conjugate vaccines, and seasonal inactivated influenza vaccines. The impact of the observed attenuation on vaccine effectiveness in this patient population is unknown. The safety and effectiveness of live or live-attenuated vaccines administered concomitantly with Ocrevus have not been assessed [*see Warnings and Precautions (5.2)*].

8 USE IN SPECIFIC POPULATIONS

8.1 Pregnancy

Risk Summary

Ocrevus is a humanized monoclonal antibody of an immunoglobulin G1 subtype and immunoglobulins are known to cross the placental barrier. There are no adequate data on the developmental risk associated with use of Ocrevus in pregnant women. However, transient peripheral B-cell depletion and lymphocytopenia have been reported in infants born to mothers exposed to other anti-CD20 antibodies during pregnancy. B-cell levels in infants following maternal exposure to Ocrevus have not been studied in clinical trials. The potential duration of B-cell depletion in such infants, and the impact of B-cell depletion on vaccine safety and effectiveness, is unknown [*see Warnings and Precautions (5.2)*]. Following administration of ocrelizumab to pregnant monkeys at doses similar to or greater than those used clinically, increased perinatal mortality, depletion of B-cell populations, renal, bone marrow, and testicular toxicity were observed in the offspring in the absence of maternal toxicity [*see Data*].

In the U.S. general population, the estimated background risk of major birth defects and miscarriage in clinically recognized pregnancies is 2% to 4% and 15% to 20%, respectively. The background risk of major birth defects and miscarriage for the indicated population is unknown.

Data

Animal Data

Following intravenous administration of Ocrevus to monkeys during organogenesis (loading doses of 15 or 75 mg/kg on gestation days 20, 21, and 22, followed by weekly doses of 20 or 100 mg/kg), depletion of B-lymphocytes in lymphoid tissue (spleen and lymph nodes) was observed in fetuses at both doses.

Intravenous administration of Ocrevus (three daily loading doses of 15 or 75 mg/kg, followed by weekly doses of 20 or 100 mg/kg) to pregnant monkeys throughout the period of organogenesis and continuing through the neonatal period resulted in perinatal deaths (some associated with bacterial infections), renal toxicity (glomerulopathy and inflammation), lymphoid follicle formation in the bone marrow, and severe decreases in circulating B-lymphocytes in neonates. The cause of the neonatal deaths is uncertain; however, both affected neonates were found to have bacterial infections. Reduced testicular weight was observed in neonates at the high dose.

A no-effect dose for adverse developmental effects was not identified; the doses tested in monkey are 2 and 10 times the recommended human dose of 600 mg, on a mg/kg basis.

8.2 Lactation

Risk Summary

There are no data on the presence of ocrelizumab in human milk, the effects on the breastfed infant, or the effects of the drug on milk production. Ocrelizumab was excreted in the milk of ocrelizumab-treated monkeys. Human IgG is excreted in human milk, and the potential for absorption of ocrelizumab to lead to B-cell depletion in the infant is unknown. The developmental and health benefits of breastfeeding should be considered along with the mother's clinical need for Ocrevus and any potential adverse effects on the breastfed infant from Ocrevus or from the underlying maternal condition.

8.3 Females and Males of Reproductive Potential

Contraception

Women of childbearing potential should use effective contraception while receiving Ocrevus and for 6 months after the last infusion of Ocrevus [*see Clinical Pharmacology (12.3)*].

8.4 Pediatric Use

Safety and effectiveness of Ocrevus in pediatric patients have not been established.

8.5 Geriatric Use

Clinical studies of Ocrevus did not include sufficient numbers of subjects aged 65 and over to determine whether they respond differently from younger subjects.

11 DESCRIPTION

Ocrelizumab is a recombinant humanized monoclonal antibody directed against CD20-expressing B-cells. Ocrelizumab is a glycosylated immunoglobulin G1 (IgG1) with a molecular mass of approximately 145 kDa.

Ocrevus (ocrelizumab) Injection for intravenous infusion is a preservative-free, sterile, clear or slightly opalescent, and colorless to pale brown solution supplied in single-dose vials. Each mL of solution contains 30 mg ocrelizumab, glacial acetic acid (0.25 mg), polysorbate 20 (0.2 mg), sodium acetate trihydrate (2.14 mg), and α - α -trehalose dihydrate (40 mg) and water for injection, at pH 5.3.

12 CLINICAL PHARMACOLOGY

12.1 Mechanism of Action

The precise mechanism by which ocrelizumab exerts its therapeutic effects in multiple sclerosis is unknown, but is presumed to involve binding to CD20, a cell surface antigen present on pre-B and mature B lymphocytes. Following cell surface binding to B lymphocytes, ocrelizumab results in antibody-dependent cellular cytotoxicity and complement-mediated lysis.

12.2 Pharmacodynamics

For B-cell counts, assays for CD19⁺ B-cells are used because the presence of Ocrevus interferes with the CD20 assay. Treatment with Ocrevus reduces CD19⁺ B-cell counts in blood by 14 days after infusion. In clinical studies, B-cell counts rose to above the lower limit of normal (LLN) or above baseline counts between infusions of Ocrevus at least one time in 0.3% to 4.1% of patients. In a clinical study of 51 patients, the median time for B-cell counts to return to either baseline or LLN was 72 weeks (range 27-175 weeks) after the last Ocrevus infusion. Within 2.5 years after the last infusion, B-cell counts rose to either baseline or LLN in 90% of patients.

12.3 Pharmacokinetics

Pharmacokinetics (PK) of Ocrevus in MS clinical studies fit a two compartment model with time-dependent clearance. The overall exposure at the steady-state (AUC over the 24 week dosing intervals) of Ocrevus was 3,510 mcg/mL per day. In clinical studies in MS patients, maintenance doses of ocrelizumab were either 600 mg every 6 months (RMS patients) or two 300 mg infusions separated by 14 days every 6 months (PPMS patients). The mean maximum concentration was 212 mcg/mL in patients with RMS (600 mg infusion) and 141 mcg/mL in patients with PPMS (two 300 mg infusions administered within two weeks). The pharmacokinetics of ocrelizumab was essentially linear and dose proportional between 400 mg and 2000 mg.

Distribution

The population PK estimate of the central volume of distribution was 2.78 L. Peripheral volume and inter-compartment clearance were estimated at 2.68 L and 0.29 L/day, respectively.

Elimination

Constant clearance was estimated at 0.17 L/day, and initial time-dependent clearance at 0.05 L/day, which declined with a half-life of 33 weeks. The terminal elimination half-life was 26 days.

Metabolism

The metabolism of Ocrevus has not been directly studied because antibodies are cleared principally by catabolism.

Specific Populations

Renal impairment

Patients with mild renal impairment were included in clinical trials. No significant change in the pharmacokinetics of Ocrevus was observed in those patients.

Hepatic impairment

Patients with mild hepatic impairment were included in clinical trials. No significant change in the pharmacokinetics of Ocrevus was observed in those patients.

13 NONCLINICAL TOXICOLOGY

13.1 Carcinogenesis, Mutagenesis, Impairment of Fertility

No carcinogenicity studies have been performed to assess the carcinogenic potential of Ocrevus.

No studies have been performed to assess the mutagenic potential of Ocrevus. As an antibody, Ocrevus is not expected to interact directly with DNA.

No effects on reproductive organs were observed in male monkeys administered ocrelizumab by intravenous injection (three loading doses of 15 or 75 mg/kg, followed by weekly doses of 20 or 100 mg/kg) for 8 weeks. There were also no effects on estrus cycle in female monkeys administered ocrelizumab over three menstrual cycles using the same dosing regimen. The doses tested in monkey are 2 and 10 times the recommended human dose of 600 mg, on a mg/kg basis.

14 CLINICAL STUDIES

14.1 Relapsing Forms of Multiple Sclerosis (RMS)

The efficacy of Ocrevus was demonstrated in two randomized, double-blind, double-dummy, active comparator-controlled clinical trials of identical design, in patients with RMS treated for 96 weeks (Study 1 and Study 2). The dose of Ocrevus was 600 mg every 24 weeks (initial treatment was given as two 300 mg IV infusions administered 2 weeks apart, and subsequent doses were administered as a single 600 mg IV infusion) and placebo subcutaneous injections were given 3 times per week. The dose of Rebif, the active comparator, was 44 mcg given as subcutaneous injections 3 times per week and placebo IV infusions were given every 24 weeks. Both studies included patients who had experienced at least one relapse within the prior year, or two relapses within the prior two years, and had an Expanded Disability Status Scale (EDSS) score from 0 to 5.5. Patients with primary progressive forms of multiple sclerosis (MS) were excluded. Neurological evaluations were performed every 12 weeks and at the time of a suspected relapse. Brain MRIs were performed at baseline and at Weeks 24, 48, and 96.

The primary outcome of both Study 1 and Study 2 was the annualized relapse rate (ARR). Additional outcome measures included the proportion of patients with confirmed disability progression, the mean number of MRI T1 gadolinium (Gd)-enhancing lesions at Weeks 24, 48, and 96, and new or enlarging MRI T2 hyperintense lesions. Progression of disability was defined as an increase of 1 point or more from the baseline EDSS score attributable to MS when the baseline EDSS score was 5.5 or less, or 0.5 points or more when the baseline EDSS score was above 5.5. Disability progression was considered confirmed when the increase in the EDSS was confirmed at a regularly scheduled visit 12 weeks after the initial documentation of neurological worsening. The primary population for analysis of confirmed disability progression was the pooled population from Studies 1 and 2.

In Study 1, 410 patients were randomized to Ocrevus and 411 to Rebif; 11% of Ocrevus-treated and 17% of Rebif-treated patients did not complete the 96-week double-blind treatment period. The baseline demographic and disease characteristics were balanced between the two treatment groups. At baseline, the mean age of patients was 37 years; 66% were female. The mean time from MS diagnosis to randomization was 3.8 years, the mean number of relapses in the previous year was 1.3, and the mean EDSS score was 2.8; 74% of patients had not been treated with a non-steroid therapy for MS in the 2 years prior to the study. At baseline, 40% of patients had one or more T1 Gd-enhancing lesions (mean 1.8).

In Study 2, 417 patients were randomized to Ocrevus and 418 to Rebif; 14% of Ocrevus-treated and 23% of Rebif-treated patients did not complete the 96-week double-blind treatment period. The baseline demographic and disease characteristics were balanced between the two treatment groups. At baseline, the mean age of patients was 37 years; 66% were female. The mean time from MS diagnosis to randomization was 4.1 years, the mean number of relapses in the previous year was 1.3, and the mean EDSS score was 2.8; 74% of patients had not been treated with a non-steroid therapy for MS in the 2 years prior to the study. At baseline, 40% of Ocrevus-treated patients had one or more T1 Gd-enhancing lesions (mean 1.9).

In Study 1 and Study 2, Ocrevus significantly lowered the annualized relapse rate and the proportion of patients with disability progression confirmed at 12 weeks after onset compared to Rebif. Results for Study 1 and Study 2 are presented in Table 4 and Figure 1.

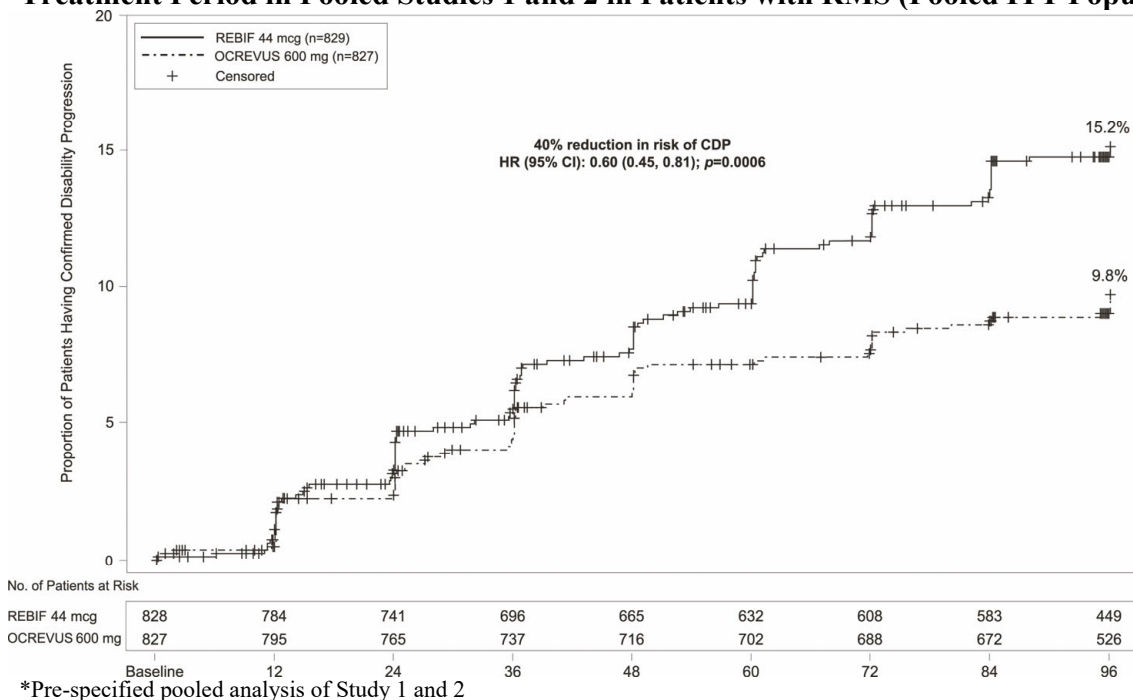
Table 4 Key Clinical and MRI Endpoints in RMS Patients from Study 1 and Study 2

Endpoints	Study 1		Study 2	
	Ocrevus 600 mg every 24 weeks N=410	Rebif 44 mcg three times a week N=411	Ocrevus 600 mg every 24 weeks N=417	Rebif 44 mcg three times a week N=418
Clinical Endpoints				
Annualized Relapse Rate (Primary Endpoint)	0.156	0.292	0.155	0.290
Relative Reduction	46% (p<0.0001)		47% (p<0.0001)	
Proportion Relapse-free	83%	71%	82%	72%
Proportion of Patients with 12-week Confirmed Disability Progression ¹	9.8% Ocrevus vs 15.2% Rebif			
Risk Reduction (Pooled Analysis ²)	40%; p=0.0006			
MRI Endpoints				
Mean number of T1 Gd-enhancing lesions per MRI	0.016	0.286	0.021	0.416
Relative Reduction	94% (p<0.0001)		95% (p<0.0001)	
Mean number of new and/or enlarging T2 hyperintense lesions per MRI	0.323	1.413	0.325	1.904
Relative Reduction	77% (p<0.0001)		83% (p<0.0001)	

¹ Defined as an increase of 1.0 point or more from the baseline Expanded Disability Status Scale (EDSS) score for patients with baseline score of 5.5 or less, or 0.5 or more when the baseline score is greater than 5.5, Kaplan-Meier estimates at Week 96.

² Data prospectively pooled from Study 1 and Study 2.

Figure 1 Kaplan-Meier Plot* of Time to Onset of Confirmed Disability Progression Sustained for at Least 12 Weeks with the Initial Event of Neurological Worsening Occurring During the Double-blind Treatment Period in Pooled Studies 1 and 2 in Patients with RMS (Pooled ITT Population)



In exploratory subgroup analyses of Study 1 and Study 2, the effect of Ocrevus on annualized relapse rate and disability progression was similar in male and female patients.

14.2 Primary Progressive Multiple Sclerosis (PPMS)

Study 3 was a randomized, double-blind, placebo-controlled clinical trial in patients with PPMS. Patients were randomized 2:1 to receive either Ocrevus 600 mg or placebo as two 300 mg intravenous infusions 2 weeks apart every 24 weeks for at least 120 weeks. Selection criteria required a baseline EDSS of 3 to 6.5 and a score of 2 or greater for the EDSS pyramidal functional system due to lower extremity findings. Neurological assessments were conducted every 12 weeks. An MRI scan was obtained at baseline and at Weeks 24, 48, and 120.

In Study 3, the primary outcome was the time to onset of disability progression attributable to MS confirmed to be present at the next neurological assessment at least 12 weeks later. Disability progression occurred when the EDSS score increased by 1 point or more from the baseline EDSS if the baseline EDSS was 5.5 points or less, or by 0.5 points or more if the baseline EDSS was more than 5.5 points. In Study 3, confirmed disability progression also was deemed to have occurred if patients who had onset of disability progression discontinued participation in the study before the next assessment. Additional outcome measures included timed 25-foot walk, and percentage change in T2 hyperintense lesion volume.

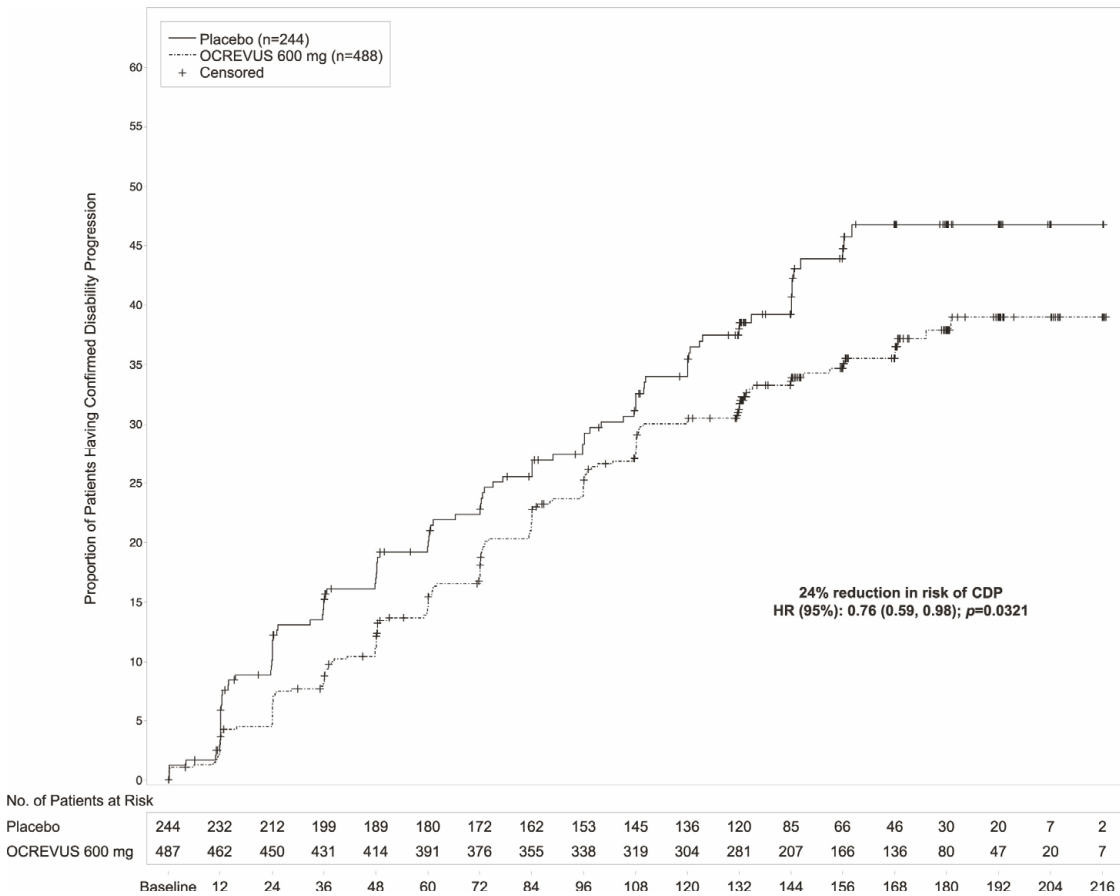
Study 3 randomized 488 patients to Ocrevus and 244 to placebo; 21% of Ocrevus-treated patients and 34% of placebo-treated patients did not complete the trial. The baseline demographic and disease characteristics were balanced between the two treatment groups. At baseline, the mean age of patients was 45; 49% were female. The mean time since symptom onset was 6.7 years, the mean EDSS score was 4.7, and 26% had one or more T1 Gd-enhancing lesions at baseline; 88% of patients had not been treated previously with a non-steroid treatment for MS. The time to onset of disability progression confirmed at 12 weeks after onset was significantly longer for Ocrevus-treated patients than for placebo-treated patients (see Figure 2). Results for Study 3 are presented in Table 5 and Figure 2.

Table 5 Key Clinical and MRI Endpoints in PPMS patients for Study 3

Endpoints	Study 3	
	Ocrevus 600 mg (two 300 mg infusions two weeks apart every 24 weeks) N=488	Placebo N=244
Clinical Outcomes		
Proportion of patients with 12-week Confirmed Disability Progression ¹	32.9%	39.3%
Risk reduction	24%; p=0.0321	
MRI Endpoints		
Mean change in volume of T2 lesions, from baseline to Week 120 (cm ³)	-0.39	0.79
	p<0.0001	

¹ Defined as an increase of 1.0 point or more from the baseline EDSS score for patients with baseline score of 5.5 or less, or an increase of 0.5 or more when the baseline score is more than 5.5

Figure 2 Kaplan-Meier Plot of Time to Onset of Confirmed Disability Progression Sustained for at Least 12 Weeks with the Initial Event of Neurological Worsening Occurring During the Double-blind Treatment Period in Study 3*



*All patients in this analysis had a minimum of 120 weeks of follow-up. The primary analysis is based on all disability progression events accrued including 21 without confirmatory EDSS at 12 weeks.

In the overall population in Study 3, the proportion of patients with 20 percent worsening of the timed 25-foot walk confirmed at 12 weeks was 49% in Ocrevus-treated patients compared to 59% in placebo-treated patients (25% risk reduction).

In exploratory subgroup analyses of Study 3, the proportion of female patients with disability progression confirmed at 12 weeks after onset was similar in Ocrevus-treated patients and placebo-treated patients (approximately 36% in each group). In male patients, the proportion of patients with disability progression confirmed at 12 weeks after onset was approximately 30% in Ocrevus-treated patients and 43% in placebo-treated patients. Clinical and MRI endpoints that generally favored Ocrevus numerically in the overall population, and that showed similar trends in both male and female patients, included annualized relapse rate, change in T2 lesion volume, and number of new or enlarging T2 lesions.

16 HOW SUPPLIED/STORAGE AND HANDLING

Ocrevus (ocrelizumab) injection is a preservative-free, sterile, clear or slightly opalescent, and colorless to pale brown solution supplied as a carton containing one 300 mg/10 mL (30 mg/mL) single-dose vial.

Store Ocrevus vials at 2°C–8°C Keep the vial in the original carton in order to protect from light. Do not freeze or shake.

17 MARKETING AUTHORISATION HOLDER

Roche Pharmaceuticals (Israel) Ltd. P.O.B. 6391, Hod Hasharon, 4524079.

18 MARKETING AUTHORISATION NUMBER(S):

159-11-34981-00

19 MANUFACTURER

Hoffmann-La Roche Ltd., Basel, Switzerland

Revised in August 2022 according to MOHs guidelines