



# INSTRUCTIONS FOR USE Toujeo solution for injection 300 units/ml in a pre-filled SoloStar pen

## Read this first

Toujeo SoloStar contains 300 units/ml insulin glargine in a pre-filled pen (which must be discarded after use) containing 1.5 ml of medicine.

- Never re-use needles. If you do, you might get a smaller dose than required or get an overdose, as the needle may be blocked.
- Never use a syringe to remove insulin from your pen. If you do, you will get too much insulin. The scale on most syringes is made for non-concentrated insulin only.

**Important information**

- Never share the pen – it is only for you.
- Never use the pen if it is damaged or if you are not sure that it is working properly.
- Always perform a safety test.
- Always carry a spare pen and spare needles in case they get lost or stop working.

**Learn to inject**

- Before using your pen, consult your doctor, pharmacist or nurse about how to inject properly.
- Ask for help if you have problems handling the pen (for example, if you have problems with your sight).
- Read all of the instructions before using your pen. If you do not follow all of these instructions, you may get too much or too little insulin.

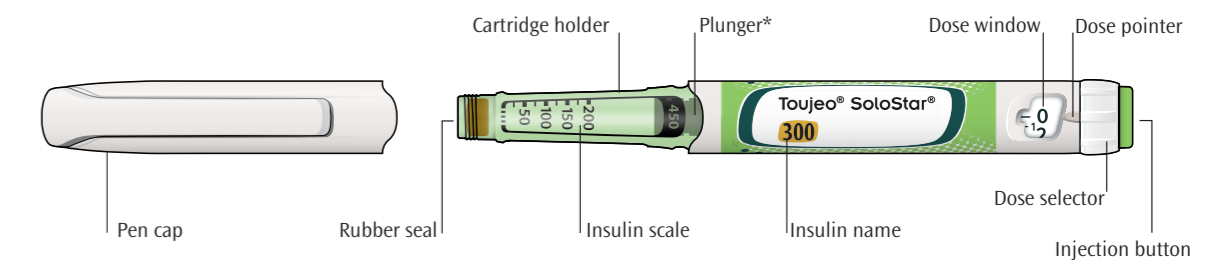
**Need help?**

If you have any questions about your pen or about diabetes, ask the doctor, pharmacist or nurse.

**Extra items you will need**

- a new sterile needle (see STEP 2).
- a container for used needles and pens.

## Get to know your pen



\* You will not see the plunger until you have injected a few doses.

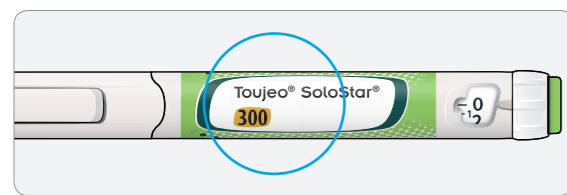
<p><b>Use by</b></p> <ul style="list-style-type: none"> <li>Use your pen for up to 6 weeks after the first use.</li> </ul>	<p><b>How to store the pen</b></p> <p><b>Before first use</b></p> <ul style="list-style-type: none"> <li>Store new pens in a refrigerator, between 2°C and 8°C.</li> <li>Do not freeze.</li> </ul> <p><b>After first use</b></p> <ul style="list-style-type: none"> <li>Keep your pen at room temperature, below 30°C.</li> <li>Never put your pen back in the refrigerator.</li> <li>Never store your pen with the needle attached to it.</li> <li>Store your pen with the cap on.</li> </ul>	<p><b>How to care for your pen</b></p> <p><b>Handle your pen with care</b></p> <ul style="list-style-type: none"> <li>Do not drop your pen or knock it against hard surfaces.</li> <li>If you think that your pen has been damaged, do not try to repair it; use a new one.</li> </ul> <p><b>Protect your pen from dust and dirt</b></p> <ul style="list-style-type: none"> <li>You can clean the outside of your pen by wiping it with a damp cloth. Do not soak, wash or lubricate your pen – this may damage it.</li> </ul>	<p><b>Throwing your pen away</b></p> <ul style="list-style-type: none"> <li>Remove the needle before throwing the pen away.</li> <li>Throw away your used pen as you have been instructed by the pharmacist.</li> </ul>
--	--	--	---

### STEP 1 - Check your pen

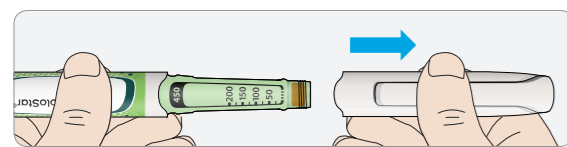
Take a new pen out of the refrigerator at least one hour before the injection. Cold insulin is more painful to inject.

**A Check the name and expiration date on the label of the pen.**

- Make sure you have the correct insulin. This is especially important if you have other injector pens.
- Never use the pen after the expiration date.

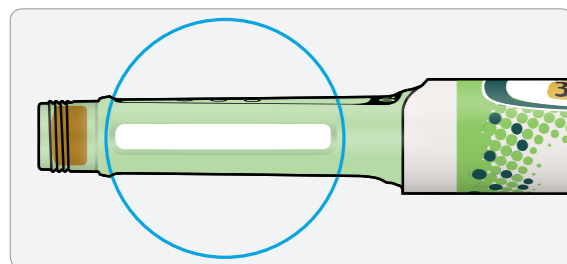


**B Pull off the pen cap.**



**C Check that the insulin is clear.**

- Do not use the pen if the insulin looks cloudy, colored or contains particles.

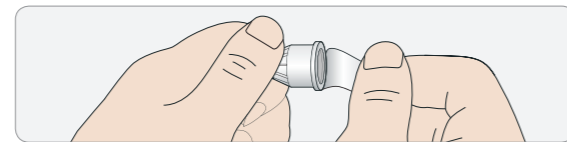


### STEP 2 - Attach a new needle

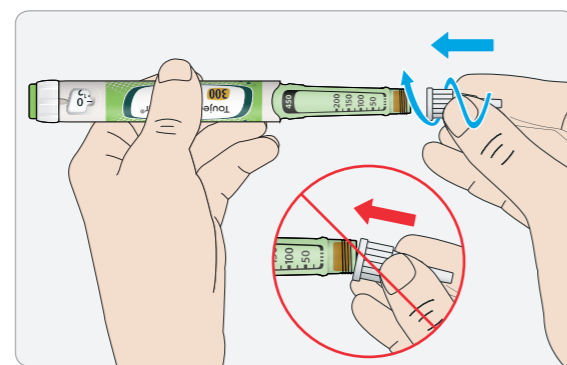
Always use a new sterile needle for each injection. This helps prevent blockage of needles, contamination of the preparation or infection in the patient.

Only use needles that are compatible for use with Toujeo (e.g., needles from the companies BD, Ypsomed, Artsana or Owen Mumford).

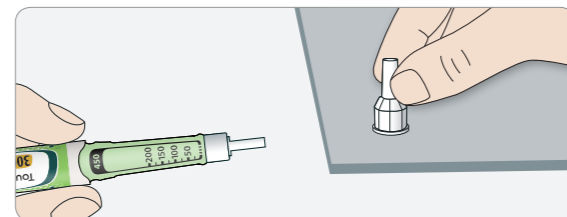
**A Take a new needle and peel off its protective seal.**



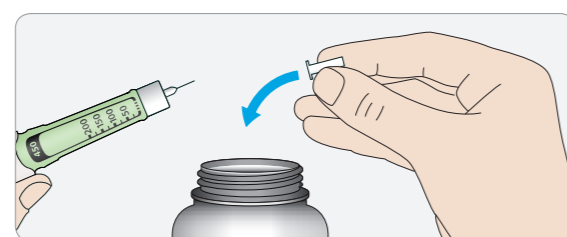
**B Keep the needle straight and screw it onto the pen until fixed. Do not overtighten.**



**C Pull off the outer needle cap. Keep this for later.**



**D Pull off the inner needle cap and throw away.**



#### Handling needles

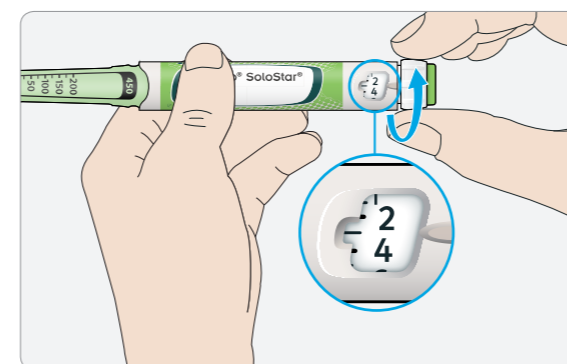
Take care when handling needles – this is to prevent needle injury and cross-infection.

### STEP 3 - Do a safety test

Always do a safety test before each injection – this is to:

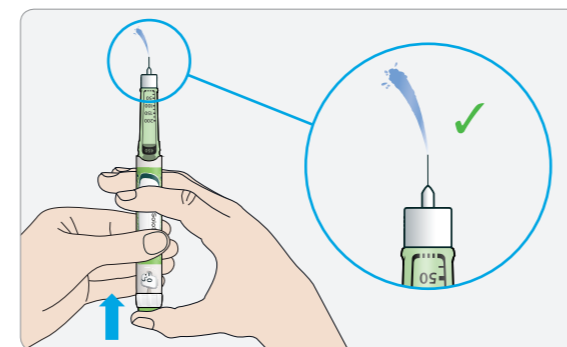
- Check that your pen and the needle are working properly.
- Make sure that you get the correct insulin dose.

**A Select 3 units by turning the dose selector until the dose pointer is at the mark between 2 and 4.**



**B Press the injection button all the way in.**

When insulin comes out of the needle tip, your pen is working correctly.



**If no insulin appears:**

- You may need to repeat this step 3 times before seeing insulin.
- If no insulin comes out after the third time, the needle may be blocked. If this happens:
  - change the needle (see STEP 6 and STEP 2).
  - then repeat the safety test (STEP 3).
- Do not use the pen if there is still no insulin coming out of the needle tip. Use a new pen.
- Never use a syringe to remove insulin from your pen.

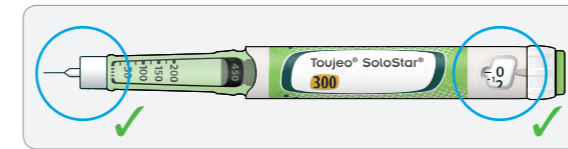
#### If you see air bubbles

You may see air bubbles in the insulin. This is normal, they will not harm you.

### STEP 4 - Select the dose

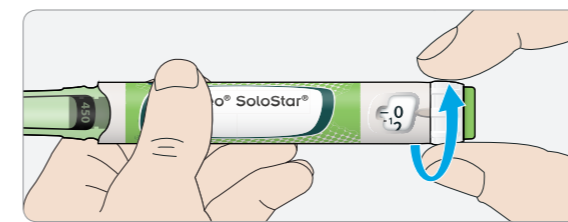
Never select a dose or press the injection button without a needle attached. This may damage your pen.

**A Make sure a needle is attached and that the dose is set to '0'.**



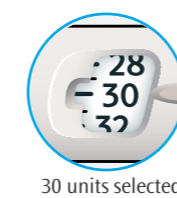
**B Turn the dose selector until the dose pointer lines up with your dose.**

- If you turned past your dose, you can turn back again.
- If there is not enough insulin left in your pen for your dose, the dose selector will stop at the number of units left.
- If you cannot select your full dose, split the dose into two injections or use a new pen.



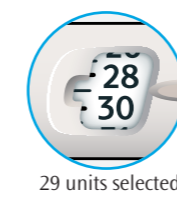
**How to read the dose window**

Even numbers are shown in line with the dose pointer:



30 units selected

Odd numbers are shown as a line between even numbers:



29 units selected

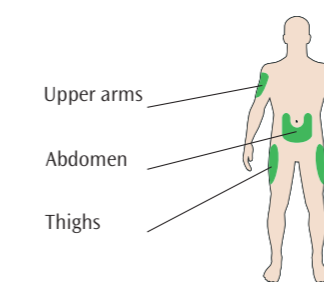
#### Units of insulin in your pen

- Your pen contains 450 units of insulin. You can select doses from 1 to 80 units in steps of 1 unit. Each pen contains more than one dose.
- You can see roughly how many units of insulin are left by looking at where the plunger is on the insulin scale.

### STEP 5 - Inject your dose

If you find it hard to press the injection button in, do not use force as this may break your pen. See section below for help.

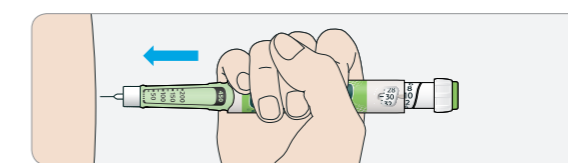
#### Injection sites



**A Choose an injection site as shown in the picture above.**

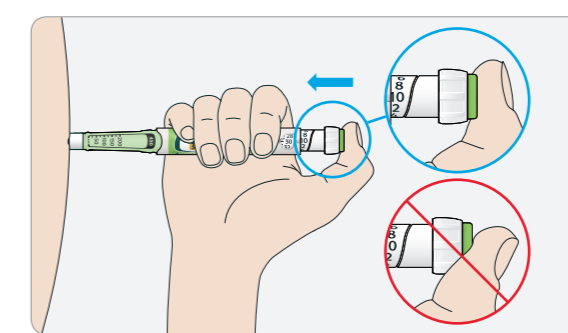
**B Push the needle into your skin as shown by your doctor, pharmacist or nurse.**

- Do not touch the injection button yet.



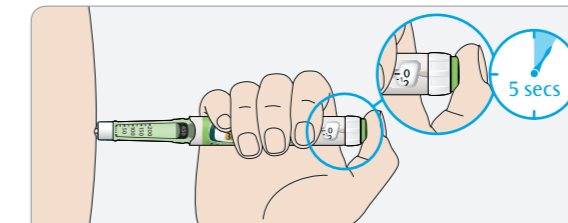
**C Place your thumb on the injection button. Press all the way in and hold.**

- Do not press at an angle – your thumb could block the dose selector from turning.



**D Keep the injection button held in and when you see '0' in the dose window, slowly count to 5.**

- This will make sure you get your full dose.



**E After slowly counting to 5, release the injection button. Then remove the needle from your skin.**

#### If you find it hard to press the button in:

- Change the needle (see STEP 6 and STEP 2) and then do a safety test (see STEP 3).
- If you still find it hard to press in, use a new pen.
- Never use a syringe to remove insulin from your pen.

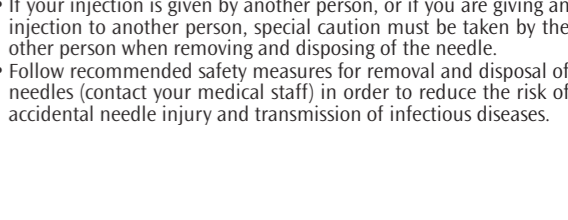
### STEP 6 - Remove the needle

Take care when handling needles – this is to prevent needle injury and cross-infection.

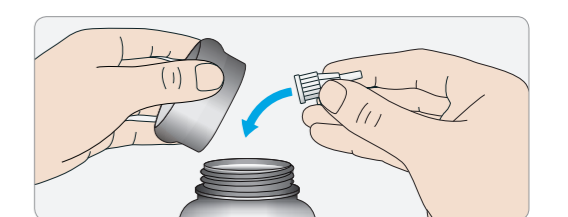
- Never put the inner needle cap back on.

**A Put the outer needle cap back on the needle, and use it to unscrew the needle from the pen.**

- To reduce the risk of needle injury, never replace the inner needle cap.
- If your injection is given by another person, special caution must be taken by the other person when removing and disposing of the needle.
- Follow recommended safety measures for removal and disposal of needles (contact your medical staff) in order to reduce the risk of accidental needle injury and transmission of infectious diseases.

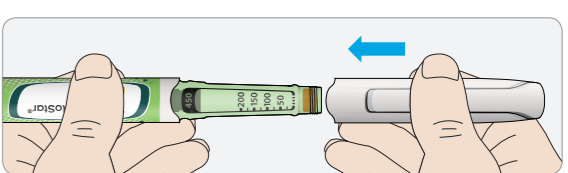


**B Throw away the used needle in a puncture-resistant container, or as instructed by your pharmacist.**



**C Put the pen cap back on.**

- Do not put the pen back in the refrigerator.



#### Technische Information / Technical information

SAP-Nr. / Plant PM code: 795707  
 Datum / Date: 17.12.2020 Sid.  
 Abmessungen / Dimensions: 594 x 420 mm  
 Seite / Page: 2/4

Kontur / Outline  
 Druckbare Farben / printing Colours: Black